



QS Series
Master Development System
User's Guide

Wireless made simple®



Warning: Linx radio frequency ("RF") products may be used to control machinery or devices remotely, including machinery or devices that can cause death, bodily injuries, and/or property damage if improperly or inadvertently triggered, particularly in industrial settings or other applications implicating life-safety concerns. No Linx Technologies product is intended for use in any application without redundancies where the safety of life or property is at risk.

The customers and users of devices and machinery controlled with RF products must understand and must use all appropriate safety procedures in connection with the devices, including without limitation, using appropriate safety procedures to prevent inadvertent triggering by the user of the device and using appropriate security codes to prevent triggering of the remote controlled machine or device by users of other remote controllers.

Do not use this or any Linx product to trigger an action directly from the data line or RSSI lines without a protocol or encoder/decoder to validate the data.

Without validation, any signal from another unrelated transmitter in the environment received by the module could inadvertently trigger the action. This module does not have data validation built in.

All RF products are susceptible to RF interference that can prevent communication.

RF products without frequency agility or hopping implemented are more subject to interference. This module does not have frequency agility built in, but the developer can implement frequency agility with a microcontroller and the example code in Linx Reference Guide RG-00101.

Do not use any Linx product over the limits in this data guide.

Excessive voltage or extended operation at the maximum voltage could cause product failure. Exceeding the reflow temperature profile could cause product failure which is not immediately evident.

Do not make any physical or electrical modifications to any Linx product.

This will void the warranty and regulatory and UL certifications and may cause product failure which is not immediately evident.

Table of Contents

1	Description
2	Ordering Information
2	MDEV-USB-QS-S Development Board
3	Getting Started
3	The USB Area
4	The RS-232 Area
5	The Microcontroller Area
6	The Prototyping Area
7	Installing the Software and Drivers
8	QS Series Master Development System Software
9	Helpful QS Resources
9	Data Guides
9	Software
9	Drivers
9	Function Declarations for Custom Software
9	In Closing
11	Resources

QS Series Master Development System

User's Guide

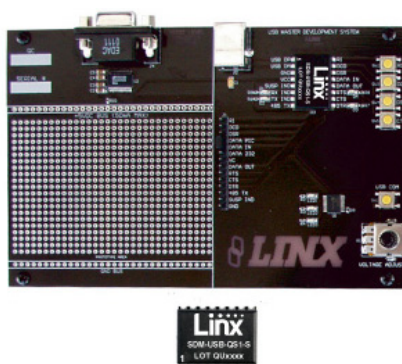


Figure 1: Package Dimensions

Description

The Linux QS Series USB module allows the rapid addition of USB to virtually any device. The Master Development System is intended to give a designer all the tools necessary to incorporate the module into a product. This guide will show how to take full advantage of the development board included with the kit. Data guides for all of the Linux parts contained in the kit are included or may be downloaded from the Linux website. The Master Development System serves several important functions:

- **Rapid Module Evaluation:** It allows the module's performance and features to be quickly evaluated.
- **Application Development:** It comes with application software and source code that demonstrate how to interface the module with a computer. This source code can serve as a starting point for the development of the product's software.
- **Design:** It shows how to design with the module and how to interface with other components.
- **Prototyping:** It allows for additional circuitry to be placed directly on the board so that it can act as the first prototype of the product. All of the signals are available on a wire-wrap header for easy connection to external circuitry.

The QS Series Master Development System Includes 1 development board, 2 QS Series USB modules*, 1 CD with the development software and full documentation.

*One part is soldered to the board, one extra is for use on your first prototype board

Ordering Information

Ordering Information	
Part Number	Description
MDEV-USB-QS	QS Series Master Development Kit

Figure 2: Ordering Information

MDEV-USB-QS Development Board

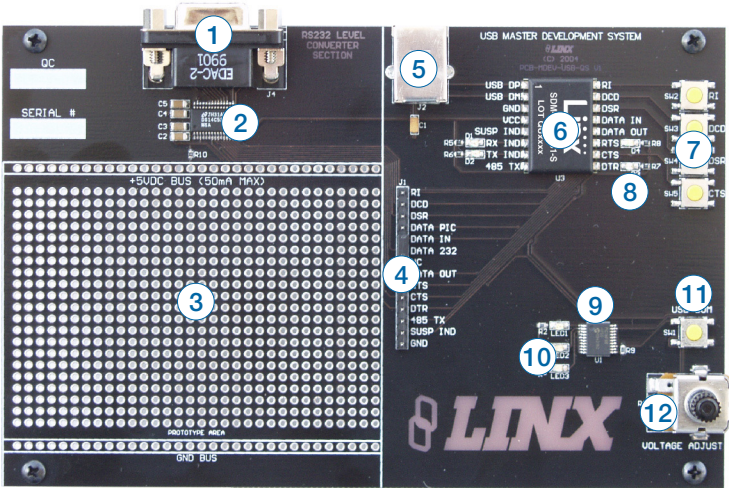


Figure 3: The QS Series Development Board

1. DB9 Connector

2. RS-232 Level Converter Chip

3. Prototyping Area

4. Breakout Header

5. USB Jack

6. QS Module
7. Modem Line Buttons

8. Modem Line LEDs

9. Microcontroller

10. Microcontroller LEDs

11. Microcontroller Button

12. Voltage Adjust Potentiometer

Getting Started

There are four areas on the development board: the USB area, the RS-232 area, the Microcontroller area and the Prototyping area. The RS-232 area connects the QS module to a standard DB9 serial connector through a RS-232 level converter chip. This section allows for full handshaking so that a legacy device can be connected and tested. The microcontroller section connects the QS to a Microchip PIC microcontroller. The included software demonstrates how to interface the QS to the PIC for bi-directional communication with a custom processor. Much of the source code is documented in the software's help file and provides a good foundation upon which to build a custom product.

The USB Area

This section demonstrates how to activate the modem outputs and read the modem inputs. Figure 4 shows the development board and Figure 5 shows the Modem Line section in the development software.

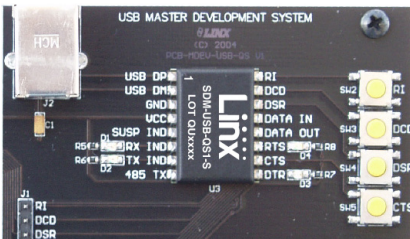


Figure 4: USB Area



Figure 5: Software Modem Line Section

Pressing the RTS and DTR buttons in the application software will activate the RTS and DTR LEDs on the development board. Pressing the RI, DCD, DSR or CTS buttons on the board will cause the appropriate indicator on the software screen to light up. The source code for programming this can be found in the software's Help File.

There are two LEDs to the left of the module, one marked TX IND and another marked RX IND. These will flash when the module is sending and receiving data, respectively.

Note that the modem lines are designed to work with UARTs, so the states are inverted. This means that the lines are at V_{CC} when off and at ground when on.

The RS-232 Area

The RS-232 area contains a RS-232 level converter that, when used with the QS Series module, creates a USB-to-RS-232 converter. All of the modem lines are provided to allow for full handshaking, and power is provided by the USB bus. To use, simply plug the USB cable from the PC into the jack, a straight-through serial cable from the PC into the DB9 connector, place the jumper in the breakout header between “Data In” and “Data 232”, and you may now run the software.

The development software is designed so that testing can be done with a single PC by sending data through the USB bus and receiving it back through the serial port and vice versa. This section can also be used to interface the PC with any RS-232 device. Custom software can be written to control the device directly, or the Virtual COM Port drivers can be used to make the USB module look like an additional serial port so that existing software can be used.

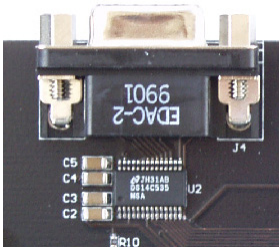


Figure 7: RS-232 Section

The Microcontroller Area

The microcontroller area contains a PIC microcontroller from Microchip and demonstrates how to interface the QS Module with a processor. Figure 8 shows the Microcontroller area on the development board and Figure 9 shows the Send and Receive via USB section in the development software.

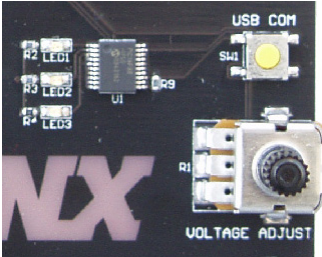


Figure 8: Microcontroller Section



Figure 9: Software Send and Receive via USB Section

The software will send data to the microcontroller to turn on LEDs when the user clicks the LED1, LED2 or LED3 buttons on the computer screen. The microcontroller will send data to the PC to light up the USB COM indicator on the screen when the USB COM button on the board is pressed. The microcontroller will also send data to control the A / D Voltage Adjust slider when the Voltage Adjust knob on the board is turned. Source code examples are provided with the software documentation to demonstrate the simplicity of interfacing the QS module with a processor and to aid in product development.

The USB bus provides all of the power for this section. To use, plug a USB cable into the jack and the PC, place the jumper in the breakout header between “Data In” and “Data PIC”, and run the application software included with the kit.

The Prototyping Area

The prototyping area contains an area of plated through holes so that external circuitry can be placed on the board. This circuitry can be interfaced with the QS module through the breakout header to the right. At the bottom of this area is a row connected to ground and at the top is a row connected to the USB power supply. The circuitry on the development board will draw approximately 40 to 50mA of current, so any circuitry added to the prototyping area cannot draw more than 50mA before enumeration, per the USB specification (please see the Power Supply Guidelines in the module's data guide for more information). If the circuitry will require more current, then an external power supply will be required. Resistor R10 is a 0-ohm jumper that can be removed to isolate the power supply row from the USB supply so that an external supply can be attached to this row.

All of the module's control and data lines are connected to the header, allowing easy access from the prototyping area. A jumper is also included to route the data from the RS-232 Section or the Microcontroller section to the QS module. It must be appropriately set before the sections will work properly.

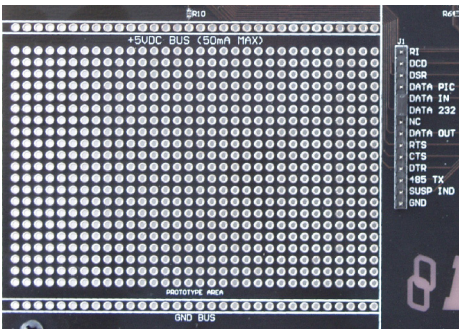


Figure 10: Prototyping Area

Installing the Software and Drivers

The software included with the Master Development System uses the Direct Drivers and cannot be used with the Virtual COM Port Drivers. Both drivers are included on the CD with the software, so be sure to choose the appropriate one.

The first time a QS module is plugged into a computer, Windows will display the Found New Hardware Wizard, which will guide you through installing the drivers. Application Note AN-00201 “Installing the SDM-USB-QS-S Drivers” describes the installation of the drivers in detail. The drivers should be installed before running the Development Software.

The QS Series Master Development System Software will automatically start when the CD is inserted and the player in the figure below will appear.



Figure 11: Software Installer

Clicking the Install Software button will start the Installation Wizard, which will guide you through the installation of the development software. The View Documentation button will show a list of the application notes and manuals related to the QS module. Selecting one of these will open the file in Adobe Acrobat. The Play Movie button will play a short video about Linx in the Player screen, which can be controlled with the Selection Keypad. Clicking the button on the bottom right of the player will open the Linx Technologies homepage in the computer's default browser.

Options listed in the View Documentation list will allow for the installation of Adobe Acrobat Reader so that the documents may be viewed. There is also the option of installing Flash, which may be required if the Linx video does not play correctly.

QS Series Master Development System Software

When the software is first started, the screen in the figure below will prompt the user to choose which area of the development board will be used with the QS module: the RS-232 or the PIC section.

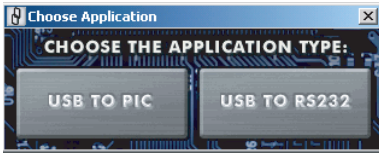


Figure 12: The Choose Application Screen

The Control Panel will then appear, setup for whichever section was selected. The area can be changed by going to the Window pull-down menu and clicking the appropriate selection.



Figure 13: The Control Panel for RS-232 Operation

Full documentation for the software and samples of the source code can be found in the help file, obtained by clicking on Help \ Help File and selecting either the .pdf file to be displayed in Adobe Acrobat or the .html file to be displayed in the default web browser.

If any problems are encountered, first unplug the module and plug it back in, then check the help file. If your problem is not corrected or addressed, then Linx contact information can be found under the Help \ Contact Us menu.

Helpful QS Resources

Below is a list of additional resources available on the development system CD or for download from the Linx website. These are intended to give the designer all of the tools needed to quickly and correctly implement the SDM-USB-QS-S module in a product.

Data Guides

- SDM-USB-QS-S USB Module Design Guide
- Application Note AN-00200, SDM-USB-QS-S Programmer's Guide
- Application Note AN-00201, Installing the Drivers for the SDM-USB-QS-S

Software

- SDM-USB-QS-S EEPROM Programmer
- SDM-USB-QS-S EEPROM Programmer Manual

Drivers

- SDM-USB-QS-S Direct Drivers
- SDM-USB-QS-S Virtual COM Port Drivers

Function Declarations for Custom Software

- SDM-USB-QS-S Visual Basic Header File
- SDM-USB-QS-S Header File

In Closing

Here at Linx, "Wireless Made Simple" is more than just our motto, it is our commitment, a commitment to the highest caliber of product, service, and support. That is why, should you have questions or encounter any difficulties using the Master Development System, you'll be glad to know many resources are available to assist you. First, check carefully for the obvious, then visit our website, www.linxtechnologies.com, e-mail techsupport@linxtechnologies.com, or call +1 800 736 6677 between 7AM and 5PM Pacific Time to speak with an application engineer.

(This page is intentionally blank.)

Resources

Support

For technical support, product documentation, application notes, regulatory guidelines and software updates, visit www.linxtechnologies.com

RF Design Services

For customers who need help implementing Linx modules, Linx offers design services including board layout assistance, programming, certification advice and packaging design. For more complex RF solutions, Apex Wireless, a division of Linx Technologies, creates optimized designs with RF components and firmware selected for the customer's application. Call +1 800 736 6677 (+1 541 471 6256 if outside the United States) for more information.

Antenna Factor Antennas

Linx's Antenna Factor division has the industry's broadest selection of antennas for a wide variety of applications.



For customers with specialized needs, custom antennas and design services are available along with simulations of antenna performance to speed development. Learn more at www.linxtechnologies.com.



Linx Technologies
159 Ort Lane
Merlin, OR, US 97532

3090 Sterling Circle, Suite 200
Boulder, CO 80301

Phone: +1 541 471 6256
Fax: +1 541 471 6251
www.linxtechnologies.com

Disclaimer

Linx Technologies is continually striving to improve the quality and function of its products. For this reason, we reserve the right to make changes to our products without notice. The information contained in this Data Guide is believed to be accurate as of the time of publication. Specifications are based on representative lot samples. Values may vary from lot-to-lot and are not guaranteed. "Typical" parameters can and do vary over lots and application. Linx Technologies makes no guarantee, warranty, or representation regarding the suitability of any product for use in any specific application. It is Customer's responsibility to verify the suitability of the part for the intended application. At Customer's request, Linx Technologies may provide advice and assistance in designing systems and remote control devices that employ Linx Technologies RF products, but responsibility for the ultimate design and use of any such systems and devices remains entirely with Customer and/or user of the RF products.

LINX TECHNOLOGIES DISCLAIMS ANY AND ALL WARRANTIES OF MERCHANTABILITY AND FITNESS FOR A PARTICULAR PURPOSE. IN NO EVENT SHALL LINX TECHNOLOGIES BE LIABLE FOR ANY CUSTOMER'S OR USER'S INCIDENTAL OR CONSEQUENTIAL DAMAGES ARISING OUT OF OR RELATED TO THE DESIGN OR USE OF A REMOTE CONTROL SYSTEM OR DEVICE EMPLOYING LINX TECHNOLOGIES RF PRODUCTS OR FOR ANY OTHER BREACH OF CONTRACT BY LINX TECHNOLOGIES. CUSTOMER AND/OR USER ASSUME ALL RISKS OF DEATH, BODILY INJURIES, OR PROPERTY DAMAGE ARISING OUT OF OR RELATED TO THE USE OF LINX TECHNOLOGIES RF PRODUCTS, INCLUDING WITH RESPECT TO ANY SERVICES PROVIDED BY LINX RELATED TO THE USE OF LINX TECHNOLOGIES RF PRODUCTS. LINX TECHNOLOGIES SHALL NOT BE LIABLE UNDER ANY CIRCUMSTANCES FOR A CUSTOMER'S, USER'S, OR OTHER PERSON'S DEATH, BODILY INJURY, OR PROPERTY DAMAGE ARISING OUT OF OR RELATED TO THE DESIGN OR USE OF A REMOTE CONTROL SYSTEM OR DEVICE EMPLOYING LINX TECHNOLOGIES RF PRODUCTS.

The limitations on Linx Technologies' liability are applicable to any and all claims or theories of recovery asserted by Customer, including, without limitation, breach of contract, breach of warranty, strict liability, or negligence. Customer assumes all liability (including, without limitation, liability for injury to person or property, economic loss, or business interruption) for all claims, including claims from third parties, arising from the use of the Products. Under no conditions will Linx Technologies be responsible for losses arising from the use or failure of the device in any application, other than the repair, replacement, or refund limited to the original product purchase price. Devices described in this publication may contain proprietary, patented, or copyrighted techniques, components, or materials.