



Commercial CCS-32

High Power DC-12GHz SPDT Switch

Latching

The CCS-32 is a broadband, SPDT Switch designed to switch microwave signals from a common input to either of two outputs. Designed for 50 Ohms transmission lines. The switch is available with either failsafe or latching type actuators operating on 28 VDC or other special DC voltages. The primary advantage of this switch over the miniature versions, shown on previous pages is the higher power handling capability.

Specifications

RF Contacts: Break before make

Actuator	Voltage (VDC) 20°C	12	15	28
	Current (mA)	150	120	60

Switching Time: 20 msec max

Connectors: SMA (f), TNC(f)(max frequency 11GHz only), N Type (f)

Weight: 6 oz. max

Temperature Range: -40°C to +65°C (Operating)

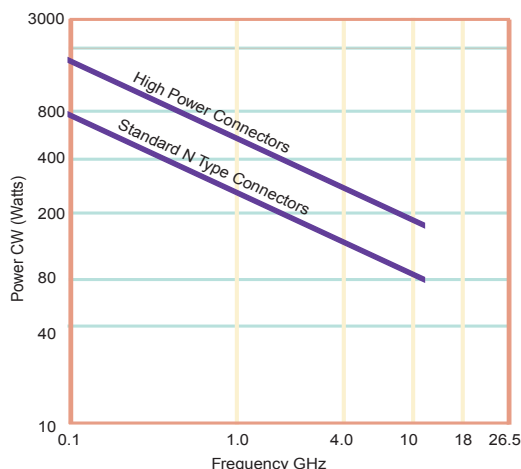
Shock: MIL-STD-202 Method 213, Condition D (500G Non Operating)

Vibration: MIL-STD-202 Method 214, Condition D (10G RMS Non Operating)

Humidity: Moisture Seal Available

MTBF: 6.7 Million Hours (MIL-HDBK-217F Fixed, 25°C, <1 Cycle per hour)

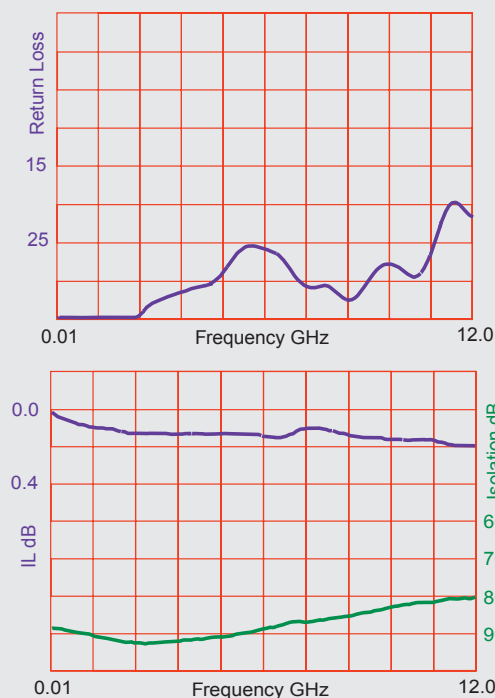
RF Power Handling



Specifications

	DC-1 GHz	1-4 GHz	4-12 GHz
VSWR (max)	1.25:1	1.40:1	1.70:1
Insertion Loss (min)	0.30 dB	0.40 dB	0.50 dB
Isolation (max)	70.0 dB	60.0 dB	60.0 dB

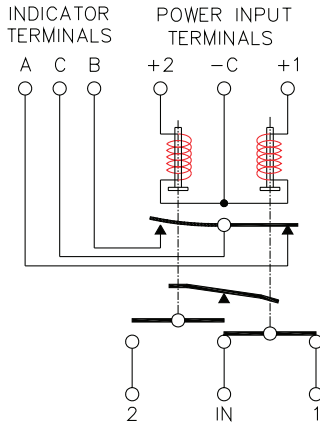
Typical Performance



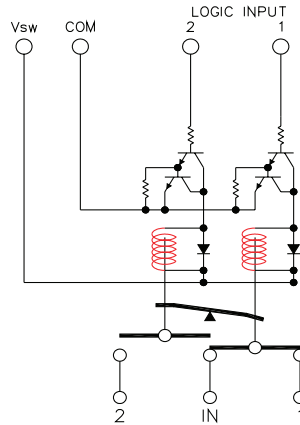
Commercial CCS-32

High Power DC-12GHz SPDT Switch

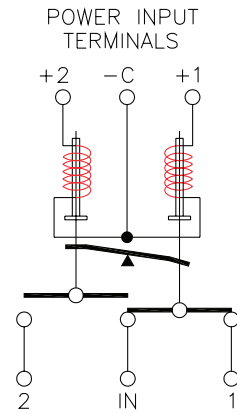
Latching



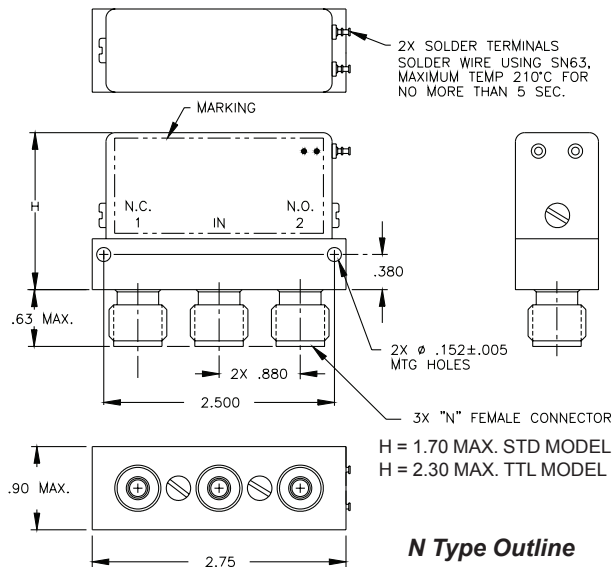
Indicators



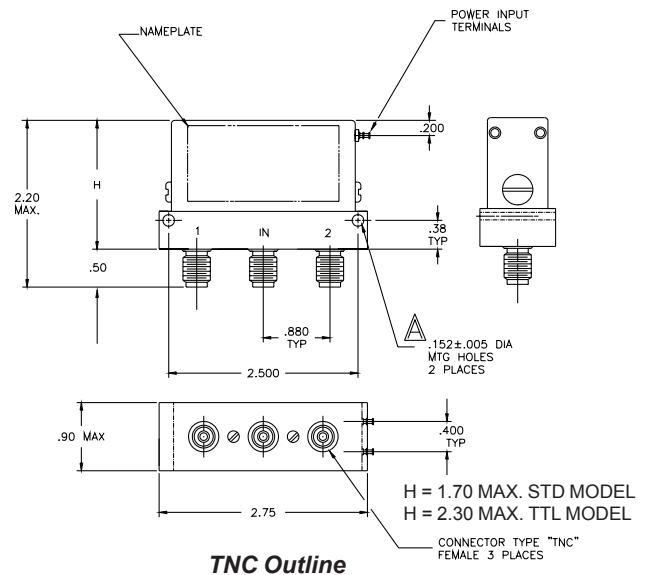
TTL



Analog



N Type Outline



TNC Outline

Part Numbering System for CCS-32 (Latching)

