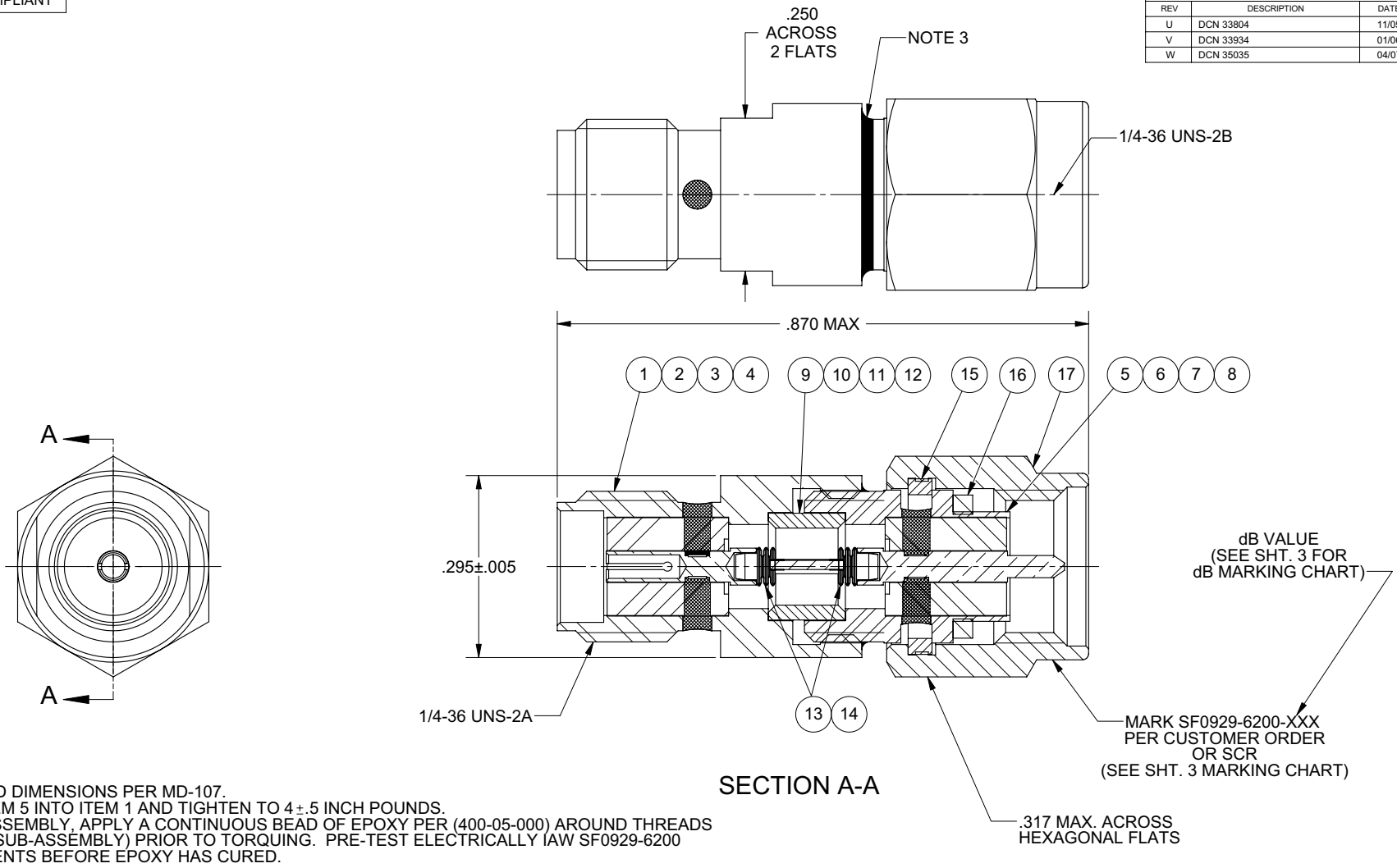


REVISION HISTORY			
REV	DESCRIPTION	DATE	APPROVED
U	DCN 33804	11/05	MGT
V	DCN 33934	01/06	BRT
W	DCN 35035	04/07	STW



NOTES:

1. MATING END DIMENSIONS PER MD-107.
2. THREAD ITEM 5 INTO ITEM 1 AND TIGHTEN TO 4 ±.5 INCH POUNDS.
3. AT FINAL ASSEMBLY, APPLY A CONTINUOUS BEAD OF EPOXY PER (400-05-000) AROUND THREADS OF ITEM 5 (SUB-ASSEMBLY) PRIOR TO TORQUING. PRE-TEST ELECTRICALLY IAW SF0929-6200 REQUIREMENTS BEFORE EPOXY HAS CURED.

MATERIAL: PER BOM	DIMENSIONS ARE IN INCHES TOLERANCES: FRACTIONAL: ±1/64 ANGULAR: X° ±1° DECIMAL: X ±.030 XX ±.010 XXX ±.005	UNLESS OTHERWISE SPECIFIED 1) ALL DIMENSIONS ARE AFTER PLATING. 2) BREAK CORNERS & EDGES .005 R. MAX. 3) CHAM. 1ST & LAST THREADS. 4) SURFACE ROUGHNESS 63 √ MIL-STD-15 5) DIA'S ON COMMON CENTERS TO BE CONCENTRIC WITHIN .005 T.I.R. 6) REMOVE ALL BURRS	SV Microwave, Inc. 2400 Centrepark West Drive, Suite 100 West Palm Beach, FL 33409
FINISH: PER BOM	INTERPRET DIMENSIONS AND TOLERANCES PER ASME Y14.5M - 1994		
THIRD ANGLE PROJECTION		DRAWN: AMF 11/21/05	TITLE: SV STANDARD SMA "MICRO" JACK TO PLUG ATTENUATOR
		CHECKED: DWC 12/92	
E.M. SIMULATION: N/A		APPROVED: RDF 12/92	SIZE: B CAGE CODE: 95077 DWG. NO. SF0929-6200-XXX
		SCALE: 6:1	SHEET 1 OF 3