

Key Features

- Wide band, 20 MHz ~ 6.0 GHz
- Low insertion loss, 0.30 dB typ.
- 1.22:1 VSWR
- 350 mA DC current handling
- 10 W CW power handling
- Precision machined housing
- RoHS compliant

Applications

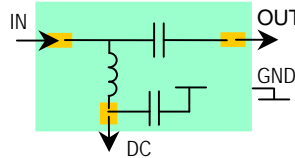
- Up to 6.0 GHz Band
- Satellite communications
- Broadcast
- RF bench test
- Mobile base station applications



Absolute Maximum Ratings

Input Power, CW	10 W
DC Current	350 mA
DC Voltage	50 V
Storage Temperature	-40°C to +85°C

Functional Block Diagram



Ordering Information

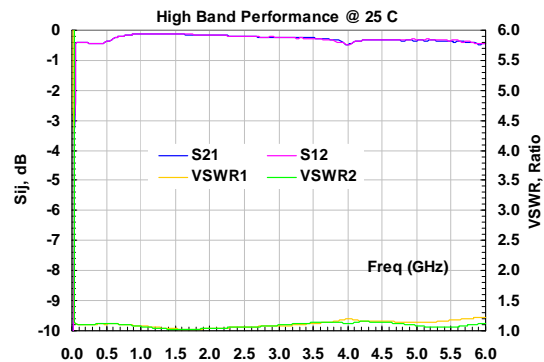
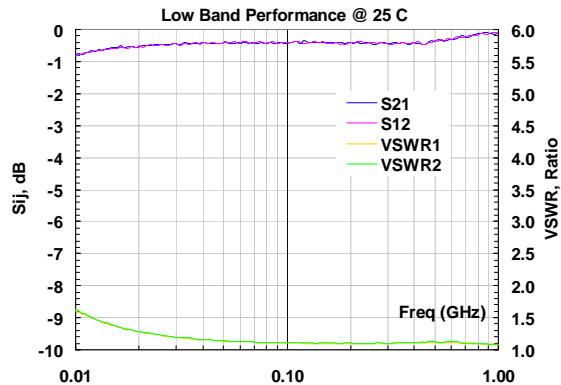
Model	WBT0060A
-------	----------

Note: Heat sink is required for high power applications!!!

Specifications (Tested at +25°C)

Item	Symbol	Test Constraints	Min	Typ	Max	Unit
Frequency Range	BW	50 Ohm Impedance	0.02		6.0	GHz
Insertion Loss	S ₂₁	0.02 – 6.0 GHz		0.3	0.6	dB
VSWR	SWR _i	0.02 – 6.0 GHz		1.22:1	1.35:1	Ratio
Isolation, RF to DC port		0.02 – 6.0 GHz		45		dB
Maximum Power Handling	P _{MAX}	0.02 – 6.0 GHz, CW			10	W
Maximum DC Voltage	V _{DCMAX}				50	V
Maximum DC Current	I _{DCMAX}				350	mA
Operating Temp	T _o		-40		+85	°C

Typical Performance



Outline, IP3

Units: INCH [mm]

