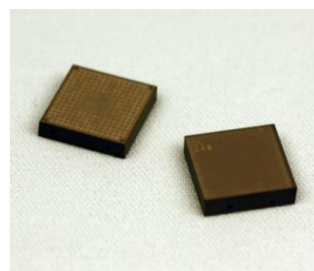


**DL246**


The DL246 is a cost effective and compact integrated delay line. Using LTCC Technology, the DL246 was designed to optimize the performance of the Scintera family of RF Adaptive Linearization Integrated Circuits. The versatile design integrates 2 delay lines, the first a nominal 2nS delay and the second a nominal 4nS. These 2 circuits can be combined for an overall delay of 6nS.


**Key Features:**

- Versatile design yields 3 separate nominal delay paths (2nS, 4nS & 6nS)
- Compact - 12mm x 12mm
- Surface Mount
- Optimized to work with the RFPAL family of products from Scintera
- Characterized over the operating frequency 500MHz to 3000MHz
- RoHS Compliant
- Part #DL246TR comes packaged on 7" Tape & Reel

**Absolute Maximum Ratings:**

Parameters	Symbol	Value	Units
Storage Temperature	Tstg	-65 to 150	°C
Maximum Operating Temperature	Tmax	-40 to 85	°C

**Electrical Specifications:** (at room temperature)

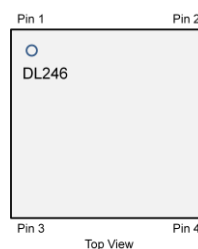
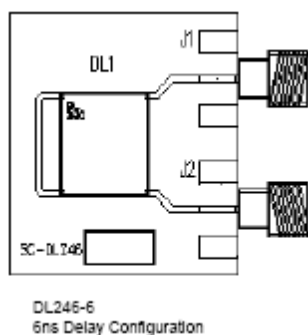
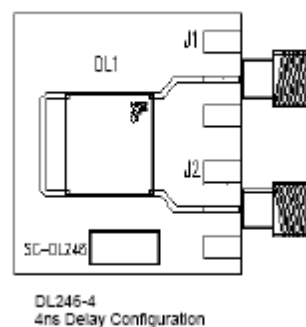
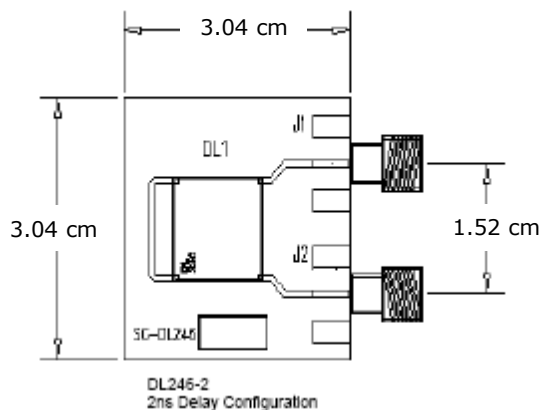
Testing Item	Test Constraints	Min	Nom	Max	Unit
Delay	Pin 3 to Pin 4; 500 MHz to 3000 MHz	1.6	2.0	2.6	nS
Insertion Loss	Pin 3 to Pin 4; 900 MHz		1.0	1.6	dB
Insertion Loss	Pin 3 to Pin 4; 2100 MHz		2.0	2.6	dB
Return Loss	Pin 3 to Pin 4; 500 MHz to 3000 MHz	-9			dB
Delay	Pin 1 to Pin 2; 500 MHz to 3000 MHz	3.3	4.0	4.6	nS
Insertion Loss	Pin 1 to Pin 2; 900 MHz		1.8	2.6	dB
Insertion Loss	Pin 1 to Pin 2; 2100 MHz		3.4	4.5	dB
Return Loss	Pin 1 to Pin 2; 500 MHz to 3000 MHz	-9			dB
Delay	Pin 2 to Pin 4; 500 MHz to 3000 MHz	4.0	6.0	7.2	nS
Insertion Loss	Pin 2 to Pin 4; 900 MHz		3.0	3.6	dB
Insertion Loss	Pin 2 to Pin 4; 2100 MHz		5.5	7.0	dB
Return Loss	Pin 2 to Pin 4; 500 MHz to 3000 MHz	-9			dB

Available exclusively from Richardson RFPD - 800-737-6937 (U.S. & Canada) - 630-208-2700 (International)

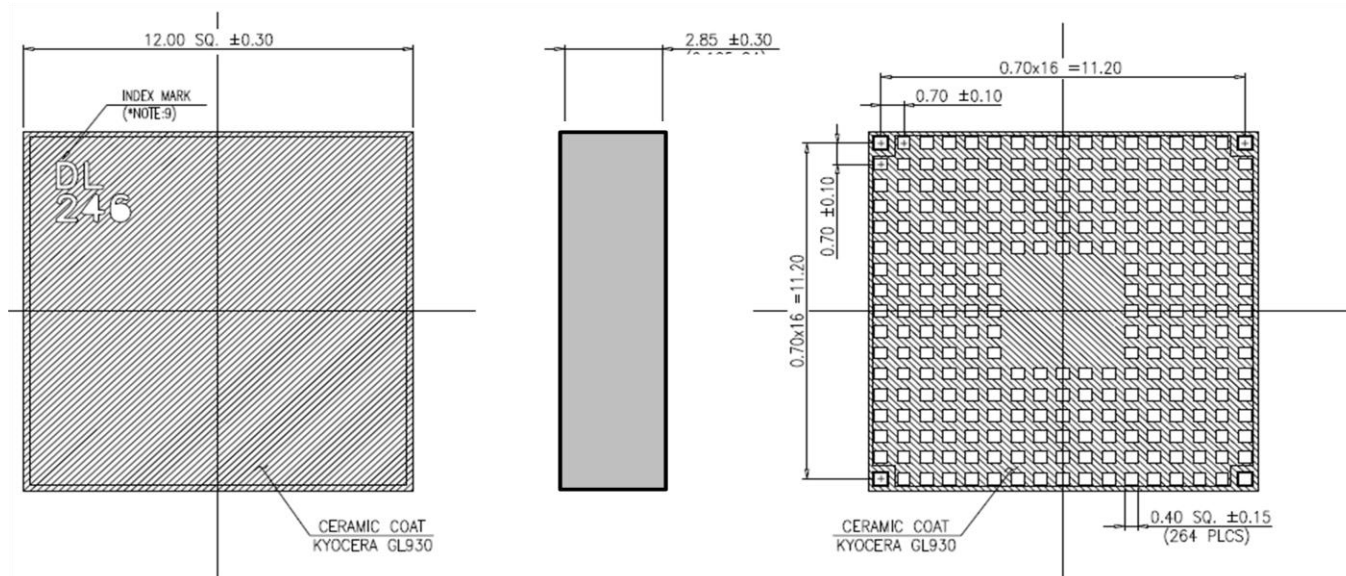
Or visit [www.richardsonrfpd.com](http://www.richardsonrfpd.com). See important product notice on last page of this document.

Internal Richardson Document #	Origination Date: April 2010	Rev: V4 Date: August 2011	Page 1/4
--------------------------------	---------------------------------	------------------------------	----------

**Mounting Orientations:** (note pin 1 location)



### Mechanical Dimensions:

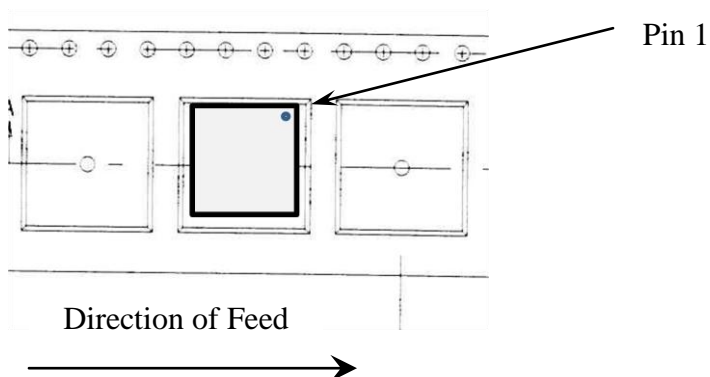


Available exclusively from Richardson RFPD - 800-737-6937 (U.S. & Canada) - 630-208-2700 (International)

Or visit [www.richardsonrfpd.com](http://www.richardsonrfpd.com). See important product notice on last page of this document.

**Tape & Reel Information:**

**24mm**



**Ordering Information**

<b>Part Number</b>	DL246 DL246TR
--------------------	------------------

---

**Richardson RFPD, Inc.**

40W267 Keslinger Road

P.O. Box 307

LaFox, IL 60147

Telephone: (800) 737-6937

(630) 208-2700

Fax: (630) 208-2662

Internet: [www.richardsonrfpd.com](http://www.richardsonrfpd.com)**IMPORTANT NOTICE**

RICHARDSON RFPD, INC. AND ITS AFFILIATES RESERVE THE RIGHT TO MAKE CHANGES TO THE PRODUCT(S) OR INFORMATION CONTAINED HEREIN WITHOUT NOTICE. RICHARDSON RFPD, INC. ASSUMES NO RESPONSIBILITY FOR ANY ERRORS WHICH MAY APPEAR IN THIS DOCUMENT.

WARRANTY INFORMATION APPLICABLE TO THE PRODUCT IDENTIFIED HEREIN IS AVAILABLE UPON REQUEST. NOTHING CONTAINED HEREIN SHALL CONSTITUTE A WARRANTY, REPRESENTATION OR GUARANTEE OF ANY KIND. RICHARDSON RFPD, INC. EXPRESSLY DISCLAIMS ALL OTHER WARRANTIES, EXPRESS AND/OR IMPLIED INCLUDING BUT NOT LIMITED TO WARRANTIES OF MERCHANTABILITY, AND OF FITNESS FOR A PARTICULAR PURPOSE, USE OR APPLICATION.

NO PART OF THIS DOCUMENT MAY BE COPIED OR REPRODUCED IN ANY FORM OR BY ANY MEANS WITHOUT THE PRIOR WRITTEN CONSENT OF RICHARDSON RFPD, INC.

**WARNING**

RICHARDSON RFPD, INC. PRODUCTS ARE NOT INTENDED FOR USE IN LIFE SUPPORT APPLIANCES, DEVICES OR SYSTEMS. USE OF A RICHARDSON RFPD, INC. PRODUCT IN ANY SUCH APPLICATION WITHOUT WRITTEN CONSENT IS PROHIBITED.

Available exclusively from Richardson RFPD - 800-737-6937 (U.S. & Canada) - 630-208-2700 (International)

Or visit [www.richardsonrfpd.com](http://www.richardsonrfpd.com). See important product notice on last page of this document.

Internal Richardson Document #	Origination Date: April 2010	Rev: V4 Date: August 2011	Page 4/4
--------------------------------	---------------------------------	------------------------------	----------