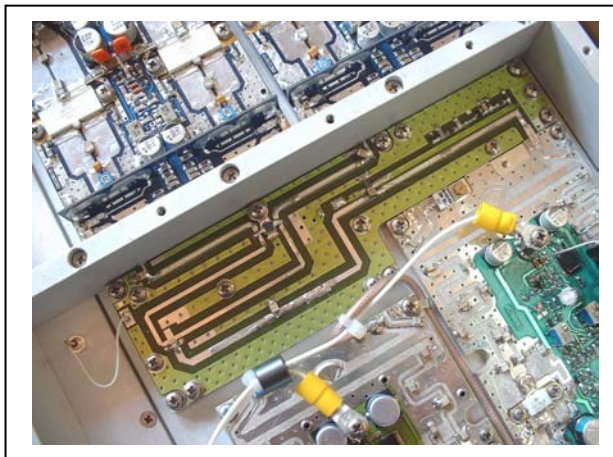


## UHF 2 Way Splitter

This splitter is developed in Wilkinson structure, and uses Microstrip lines and transformer.

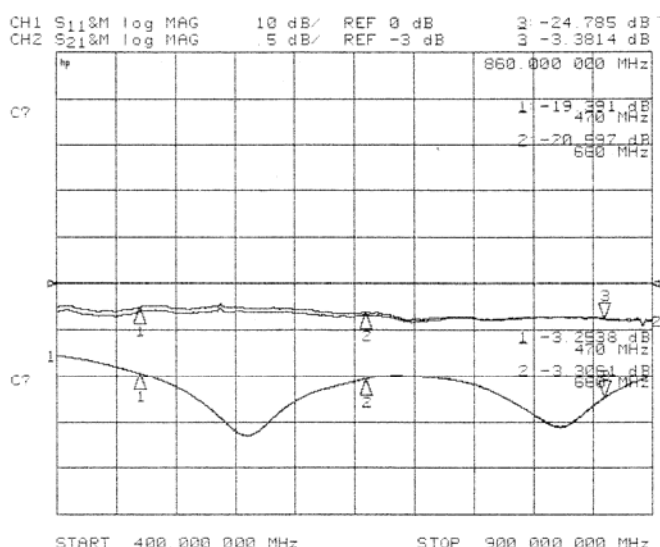
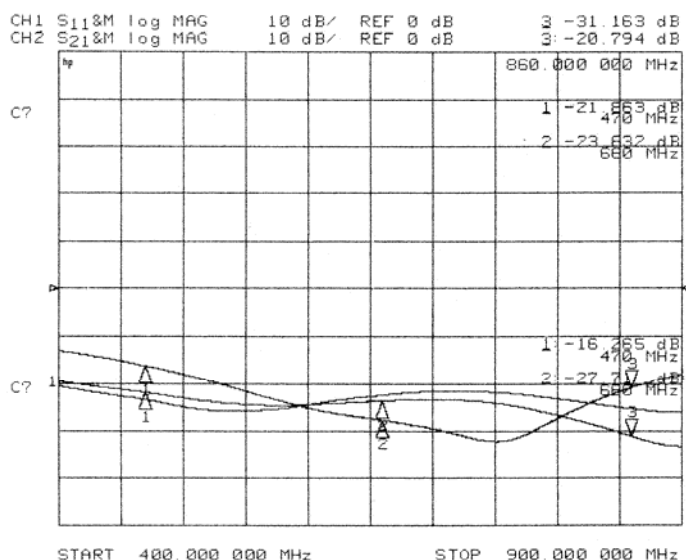
It is composed of two “quarter wave steps”, in order to work on all UHF range.

- Frequency Range: 470 – 862 MHz
- Structure: 2way Wilkinson Splitter
- Input/Output impedances 50Ω
- Isolated Output Ports
- Material: microwave substrate on aluminum baseplate



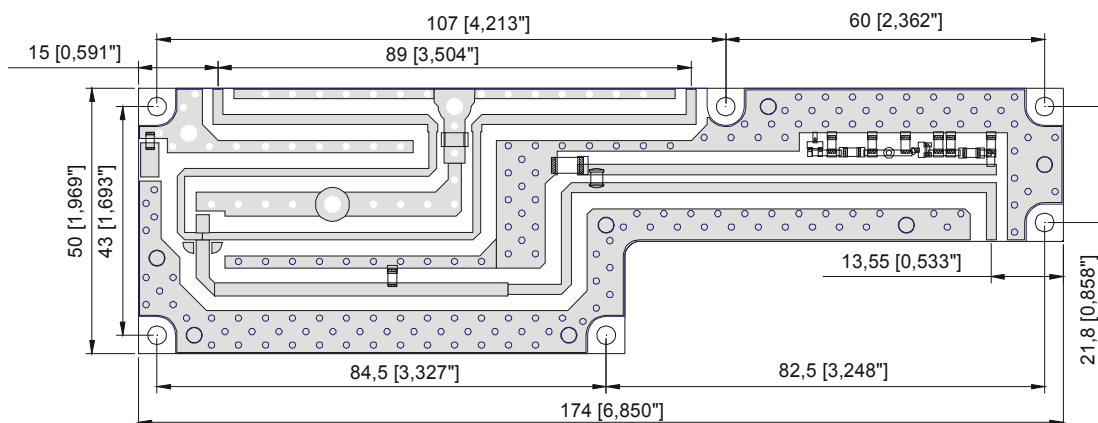
## CHARACTERISTICS

<b>Input Power</b>	40 W p- Synk or 20W CW
<b>Return Loss @ input ports</b>	-18 dB Min, -20dB typ.
<b>Return Loss @ common port</b>	-8 dB Min, -20dB typ.
<b>Insert. Loss @ 860 MHz</b>	-0.5 dB Max, 0.4 dB Typ
<b>Isolation (between input ports)</b>	-16 dB Min
<b>Amplitude Umbalance</b>	± 0.2 dB Max
<b>Phase Umbalance</b>	± 5° Max
<b>Input/Output Connection</b>	Solder Tab <sup>1</sup>



<sup>1</sup> Optional connectorized version available

Contact Res-Ingenium, +39 0763 316333 Fax +39 0763316002- or visit [www.res-ingenium.com](http://www.res-ingenium.com) for a complete listing.



Dimensions: mm [inch]

Contact Res-Ingenium, +39 0763 316333 Fax +39 0763316002- or visit [www.res-ingenium.com](http://www.res-ingenium.com) for a complete listing.

**Res-Ingenium**

Via dei Vasari, 17  
Zona Industriale Fontanelle di Bardano  
05018 Orvieto (TR)  
Italy  
Telephone: +39 0736 316333  
Fax: +39 0763 316002  
Internet: [res-ingenium.com](http://res-ingenium.com)  
E-Mail: [map@res-ingenium.com](mailto:map@res-ingenium.com)

**IMPORTANT NOTICE**

RES-INGENIUM RESERVE THE RIGHT TO MAKE CHANGES TO THE PRODUCT(S) OR INFORMATION CONTAINED HEREIN WITHOUT NOTICE. RES-INGENIUM ASSUMES NO RESPONSIBILITY FOR ANY ERRORS WHICH MAY APPEAR IN THIS DOCUMENT.

WARRANTY INFORMATION APPLICABLE TO THE PRODUCT IDENTIFIED HEREIN IS AVAILABLE UPON REQUEST. NOTHING CONTAINED HEREIN SHALL CONSTITUTE A WARRANTY, REPRESENTATION OR GUARANTEE OF ANY KIND. RES-INGENIUM EXPRESSLY DISCLAIMS ALL OTHER WARRANTIES, EXPRESS AND/OR IMPLIED INCLUDING BUT NOT LIMITED TO WARRANTIES OF MERCHANTABILITY, AND OF FITNESS FOR A PARTICULAR PURPOSE, USE OR APPLICATION.

No part of this document may be copied or reproduced in any form or by any means without the prior written consent of Res-Ingenium.

**WARNING**

RES-INGENIUM PRODUCTS ARE NOT INTENDED FOR USE IN LIFE SUPPORT APPLIANCES, DEVICES OR SYSTEMS. USE OF A RES-INGENIUM PRODUCT IN ANY SUCH APPLICATION WITHOUT WRITTEN CONSENT IS PROHIBITED.