

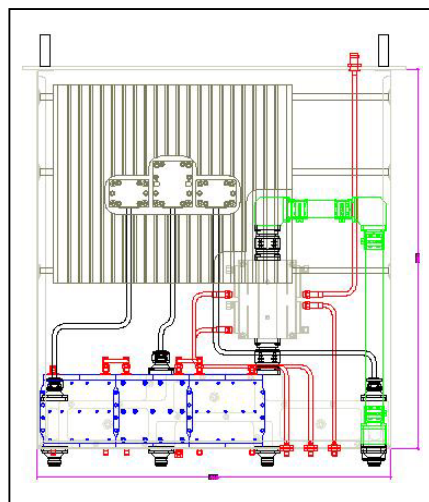
# UHF MULTICOUPLER HU300-4

## UHF 4 Way Splitter/Combiner Unit

This splitter/combiner unit is developed in Multicoupler structure, and uses striplines and transformer

It is composed of four “three broad band couplers”, in order to work on all UHF range.

- Frequency Range: 470 – 862 MHz
- Structure: 4way Splitter/Combiner Unit
- Input/Output impedances 50Ω
- Isolated Output Ports
- Output Matching (Location Output Combiner): >26 dB
- Input Matching (Location Output Combiner): >26 dB
- Insertion Loss (Location Output Combiner): <0.1 dB
- Max. Amplitude Variation: < ± 0.3 dB
- Max. Phase Variation: < ± 1 °
- Decoupling between accesses: > 26 dB
- Max. Input Power 4 ways: 4 x 250 W (CW)
- Typical Output Power 4 ways:  $0.98 * \Sigma P_{in}$  (CW)
- Coupling: -33 to 53 (on any channel)
- Combiner Output/Splitter outputs Decoupling: >80 dB
- Dimensions: 19 Inch, 2HE, 490 (mm) Depth



## UHF HYBRID MULTICOUPLER

Max Input Power	500 W DTV / 750 W ATV
Frequency Range	470 – 862 MHz
Isolation	> 30 dB
Max Output Power	2 kW DTV / 3 kW ATV
Enviromental Condition	-5 to +45 °C
Amplitude Unbalance	-6.02 ± 0.6 dB
Phase Balance	180°/-90°/ 0°/-90° ± 1 °
Return Loss	> 30 dB
Connectors	Inputs: 5 x 7/16 Female Output: 1 x EIA 7/8 Flanged Loads: 3 x 7/16 Female
Dimensions (mm)	Height: 49 Wide: 438 Depth: 135

## UHF HYBRID MULTICOUPLER OPTIONS

F	7-16 Male Connector
G	EIA 7/8" Unflanged Conn.
H	EIA 7/8" Flanged Conn.
I	EIA 7/8" Plug Conn.
J	EIA 1+5/8" Unflanged Conn.
K	EIA 1+5/8" Flanged Conn.

Conctat Res-Ingenium, +39 0763 316333 Fax +39 0763316002- or visit [www.res-ingenium.com](http://www.res-ingenium.com) for a complete listing.

# UHF MULTICOUPLER HU300-4

## UHF HYBRID SPLITTER

Frequency Range	470 – 862 MHz
Max Input Power	50 W RMS
Isolation	> 24 dB
Insertion Loss	< 0.7 dB (Over the theoretical -3.01 dB)
Amplitude Balance	± 0.1 dB
Return Loss	> 24 dB
Phase Balance	0° / -90° ± 1°
Enviromental Condition	-5 to +45 ° C
Connectors	3 SMA Female
Dimensions (mm)	Height: 15 Wide: 99 Depth: 111

## UHF HYBRID SPLITTER OPTIONS

C	N Female Connector
---	--------------------

### Res-Ingenium

Via dei Vasari, 17  
Zona Industriale Fontanelle di Bardano  
05018 Orvieto (TR)  
Italy  
Telephone: +39 0736 316333  
Fax: +39 0763 316002  
Internet: [res-ingenium.com](http://res-ingenium.com)  
E-Mail: [map@res-ingenium.com](mailto:map@res-ingenium.com)

### IMPORTANT NOTICE

RES-INGENIUM RESERVE THE RIGHT TO MAKE CHANGES TO THE PRODUCT(S) OR INFORMATION CONTAINED HEREIN WITHOUT NOTICE. RES-INGENIUM ASSUMES NO RESPONSIBILITY FOR ANY ERRORS WHICH MAY APPEAR IN THIS DOCUMENT.

WARRANTY INFORMATION APPLICABLE TO THE PRODUCT IDENTIFIED HEREIN IS AVAILABLE UPON REQUEST. NOTHING CONTAINED HEREIN SHALL CONSTITUTE A WARRANTY, REPRESENTATION OR GUARANTEE OF ANY KIND. RES-INGENIUM EXPRESSLY DISCLAIMS ALL OTHER WARRANTIES, EXPRESS AND/OR IMPLIED INCLUDING BUT NOT LIMITED TO WARRANTIES OF MERCHANTABILITY, AND OF FITNESS FOR A PARTICULAR PURPOSE, USE OR APPLICATION.

No part of this document may be copied or reproduced in any form or by any means without the prior written consent of Res-Ingenium.

### WARNING

RES-INGENIUM PRODUCTS ARE NOT INTENDED FOR USE IN LIFE SUPPORT APPLIANCES, DEVICES OR SYSTEMS. USE OF A RES-INGENIUM PRODUCT IN ANY SUCH APPLICATION WITHOUT WRITTEN CONSENT IS PROHIBITED.

Contact Res-Ingenium, +39 0763 316333 Fax +39 0763316002- or visit [www.res-ingenium.com](http://www.res-ingenium.com) for a complete listing.