

MAFL-009272-CD0AC0

CATV Diplex Filter
5 - 1002 / 1125 - 1550 MHz

Rev: v3

Features

- 75 Ohm
- SMT unit
- RoHS Compliant

Description

- M/A-COM's MAFL-009272-CD0AC0 is a surface mount diplex filter unit designed for MoCA applications.

Product Image



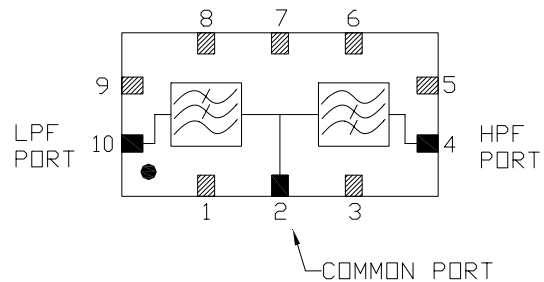
Electrical Specifications: $T_A = 25^\circ\text{C}$, $Z_0 = 75\Omega$

Parameter	Units	Min	Typ	Max
Common to Low				
Insertion Loss				
5 - 42 MHz	dB	-	0.05	0.25
42 - 860 MHz	dB	-	0.6	1.0
860 - 1002 MHz	dB	-	1.5	1.7
Rejection				
1130 - 1550 MHz	dB	37	40	-
Common to High				
Insertion Loss				
1125 - 1550 MHz	dB	-	1.7	2.0
Rejection				
5 - 1002 MHz	dB	37	40	-
2250 - 2400 MHz	dB	30	33	-
2400 - 2600 MHz	dB	18	20	-
2600 - 3000 MHz	dB	10	12	-
Common Port Return Loss				
5 - 600 MHz	dB	12	16	-
600 - 950 MHz	dB	11	12	-
950 - 1002 MHz	dB	12	13	-
1125 - 1200 MHz	dB	12	13	-
1200 - 1550 MHz	dB	11	12	-
Common port voltage transient	V	-	-	200

Pin Configuration

Function	Pin Number
Common Port	2
Low Pass Port	10
High Pass Port	4
Ground	1, 3, 5 - 9
Not connected	-

Functional Schematic



ADVANCED: Data Sheets contain information regarding a product M/A-COM Technology Solutions is considering for development. Performance is based on target specifications, simulated results, and/or prototype measurements. Commitment to develop is not guaranteed.

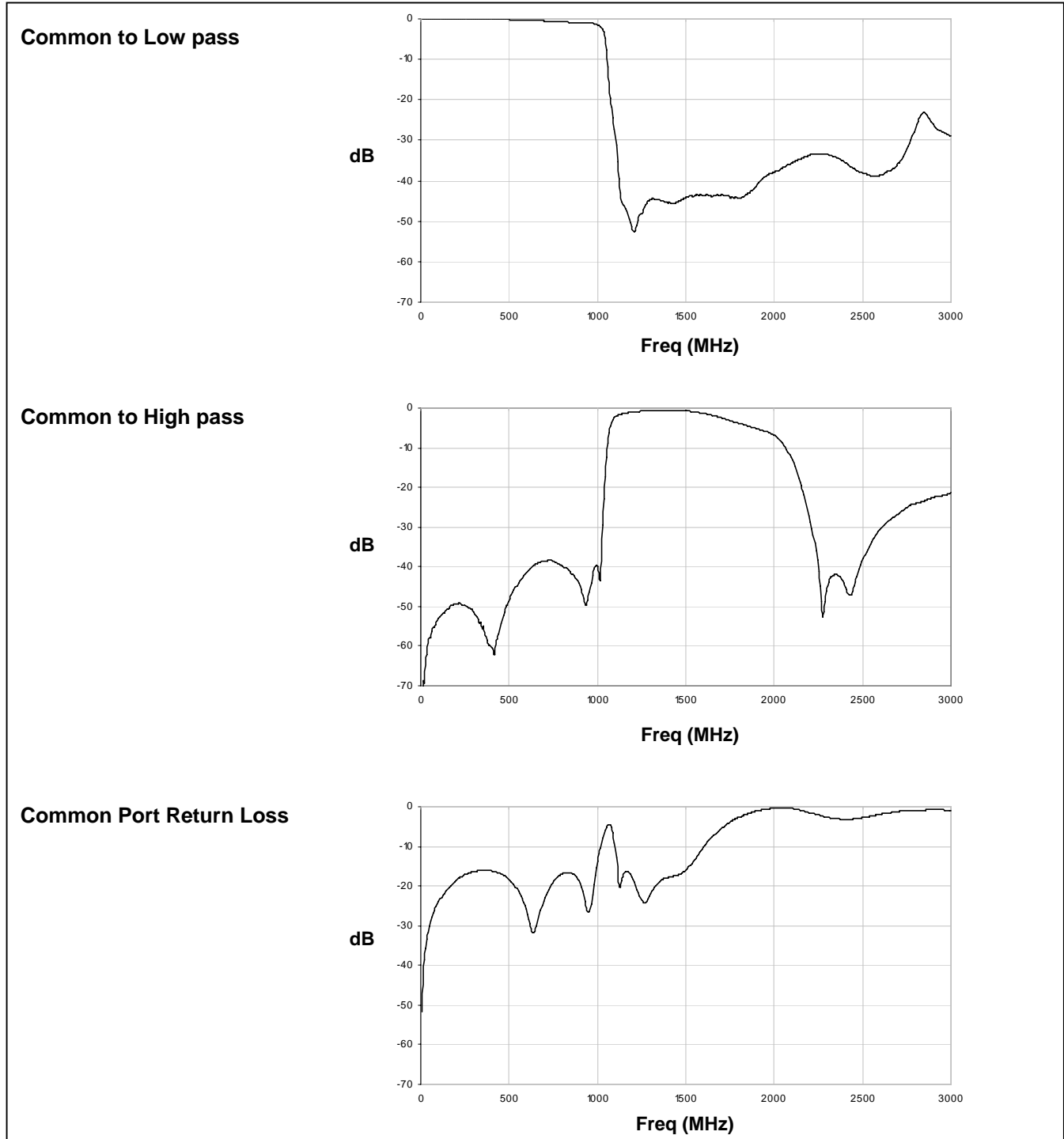
PRELIMINARY: Data Sheets contain information regarding a product M/A-COM Technology Solutions has under development. Performance is based on engineering tests. Specifications are typical. Mechanical outline has been fixed. Engineering samples and/or test data may be available. Commitment to produce in volume is not guaranteed.

• **North America** Tel: 800.366.2266 • **Europe** Tel: +353.21.244.6400
• **India** Tel: +91.80.43537383 • **China** Tel: +86.21.2407.1588

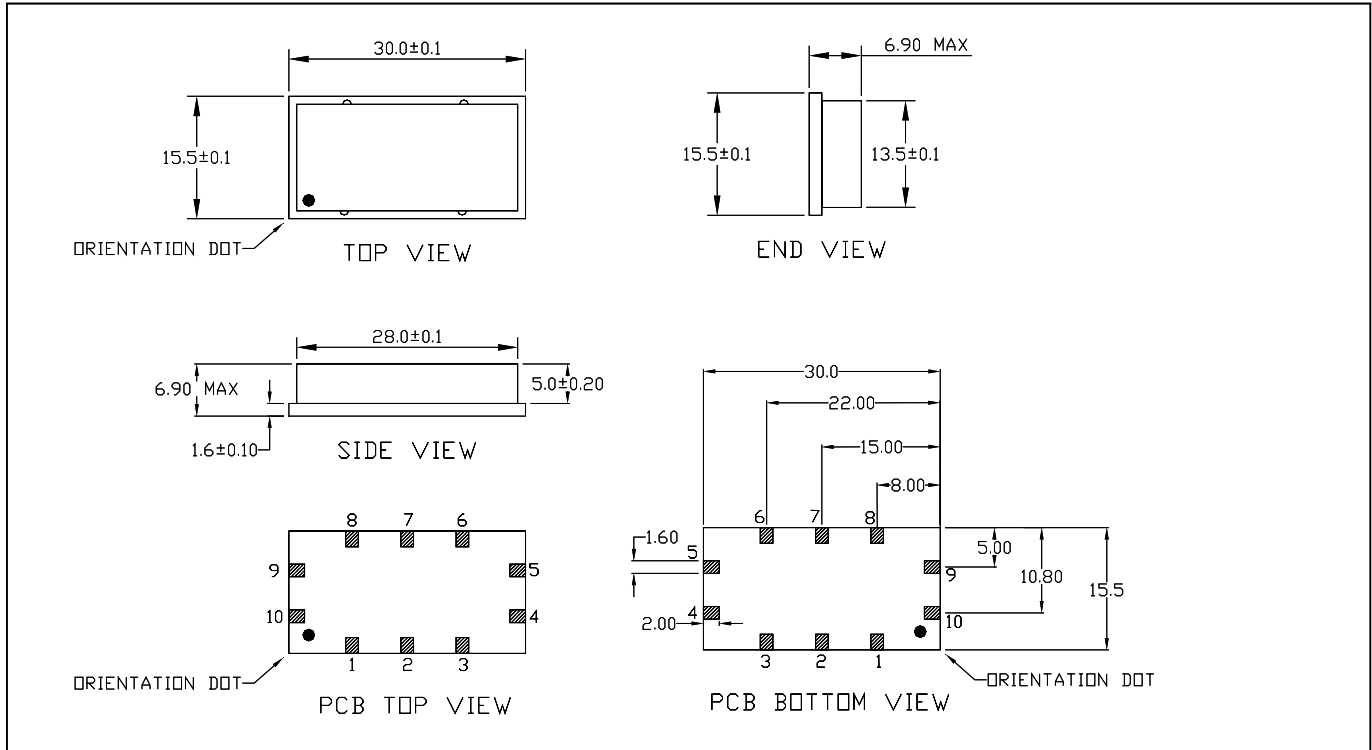
Visit www.macomtech.com for additional data sheets and product information.

M/A-COM Technology Solutions Inc. and its affiliates reserve the right to make changes to the product(s) or information contained herein without notice.

Typical Performance Curves at +25°C

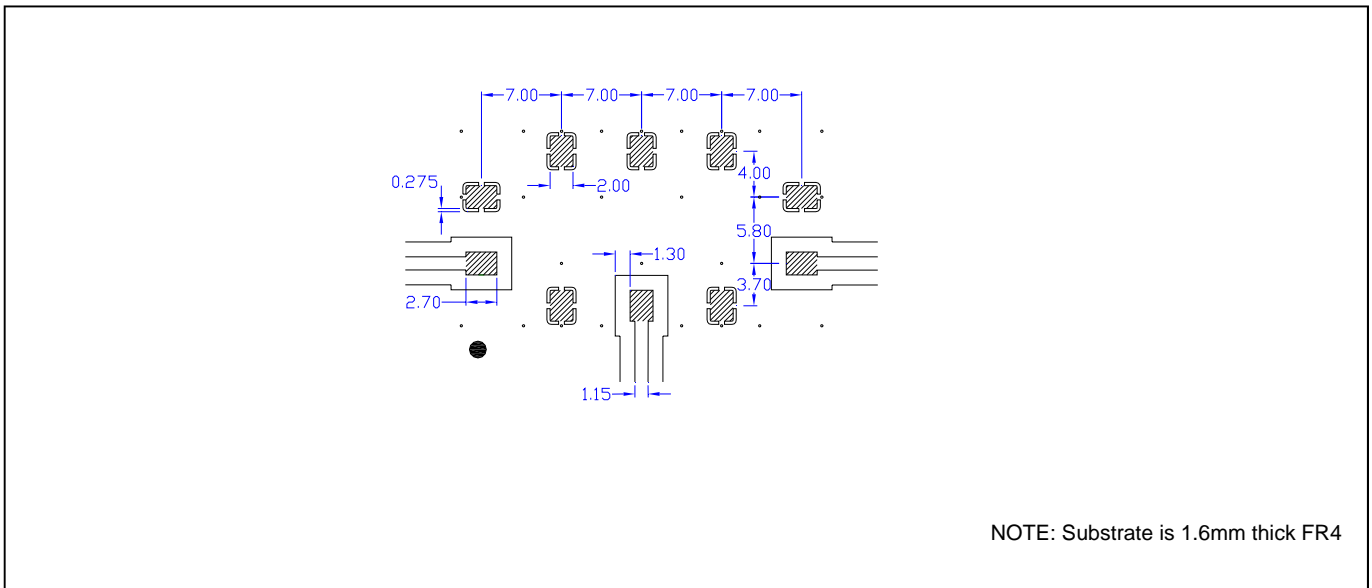


Outline Drawing:



1. Dimensions in mm.
2. Tolerance: ± 0.2 mm unless otherwise noted.
3. Model number and lot code printed on reel.
4. ENIG finished terminations.

Recommended PCB Configuration



3 Dimensions in mm. Tolerance: $.x \pm 0.1$, $.xx \pm 0.05$ unless otherwise noted

ADVANCED: Data Sheets contain information regarding a product M/A-COM Technology Solutions is considering for development. Performance is based on target specifications, simulated results, and/or prototype measurements. Commitment to develop is not guaranteed.
PRELIMINARY: Data Sheets contain information regarding a product M/A-COM Technology Solutions has under development. Performance is based on engineering tests. Specifications are typical. Mechanical outline has been fixed. Engineering samples and/or test data may be available. Commitment to produce in volume is not guaranteed.

• **North America** Tel: 800.366.2266 • **Europe** Tel: +353.21.244.6400
 • **India** Tel: +91.80.43537383 • **China** Tel: +86.21.2407.1588
 Visit www.macomtech.com for additional data sheets and product information.

M/A-COM Technology Solutions Inc. and its affiliates reserve the right to make changes to the product(s) or information contained herein without notice.

CATV Diplex Filter
5 - 1002 / 1125 - 1550 MHz

Rev: v3

Tape & Reel Information

Parameter	Units	Value
Qty per reel	-	200
Reel size	mm	330
Tape width (W)	mm	44.00
Pitch (P ₁)	mm	24.00
A ₀	mm	15.80
B ₀	mm	30.30
K ₀	mm	7.20
Orientation	-	F30
Reference ANI-019 for Orientation Spec		

Ordering Information

Part Number	Description
MAFL-009272-CD0AC0	Tape & Reel

Recommended Maximum Ratings

Parameter	Units	Min	Max
RF Power	mW		250
DC Current	mA		30
Operating Temperature Range	°C	-40	+85
Storage Temperature Range	°C	-40	+85