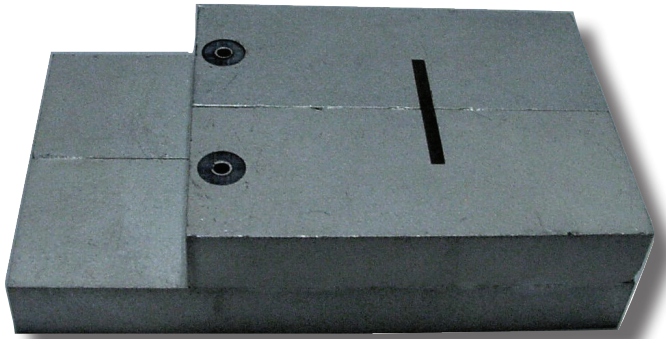


CMD: ClearPlex Metro Cell Duplexers

Delivers performance comparable to Air-Cavity for cost and size constrained applications



CTS Electronic Components introduces new high-reliability, ceramic cavity waveguide filters that deliver performance comparable to Air-Cavity for next-generation size optimized system requirements.

Delivers the isolation and rejection required for 4-10W at Antenna metro cell basestations and remote radio head, as well as medium-power DAS systems including applications needing multi-band co-location, linearized PAs, carrier-aggregation, and "whole-band" systems.

Product family offers versions for all of the major frequency bands >1.7GHz while sharing a common maximum physical envelope enabling a platform solution. See the UMD product family for <1.0GHz.

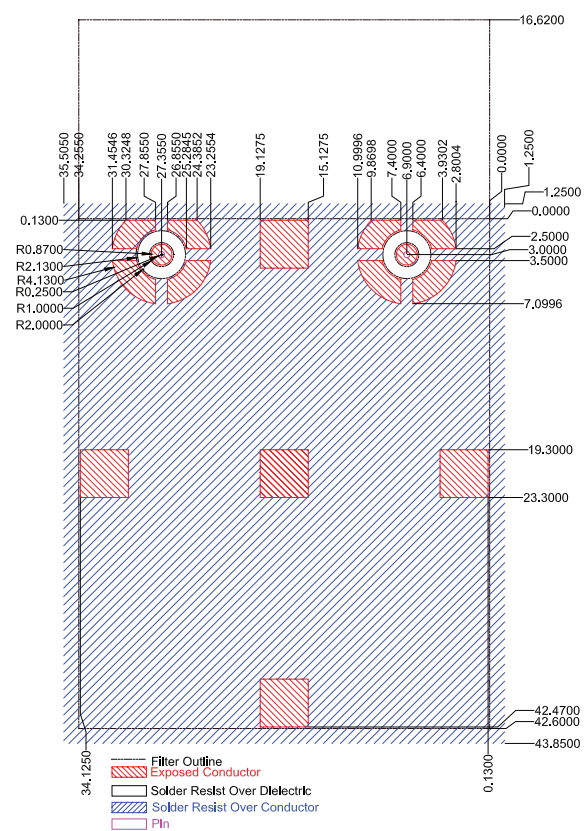
Model	Freq Band#	DL Freq Range [MHz]	UL Freq Range [MHz]
CMD001A	1	2110 - 2170	1920 - 1980
CMD002A	2	1930-1990	1850 - 1910
CMD003A	3	1805 - 1880	1710 - 1785
CMD004A	4	2110 - 2155	1710 - 1755
CMD007A	7	2620 - 2690	2500 - 2570
CMD010A	4 10	2110 - 2180	1710 - 1780
CMD025A	2 25	1930-1995	1850 - 1915
CMD030A	30	2350 - 2360	2305-2315

Insertion Loss (5MHz avg)	< 2.2 dB
Uplink Atten	82 dB typ 80 dB min
Downlink Atten	76 dB typ 74 dB min
Return Loss	> 12.0 dB
Input Power Rating	20.0W Avg 200W Peak
Passive Inter-Modulation	<-110dBm (2 tones; 10W each)
Size (L x W x H) (incl shield)	<65 x <40 x 15mm (each BPF)
Max Weight	<140 g (each BPF)
Temperature Range	-40°C to +85°C



CTS®

Universal PCB Footprint for all CMD frequency versions: (requires 2 such footprints for the pair of Bandpass filters)



CMD003A (measured)

