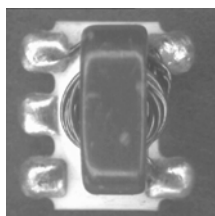


E-Series RF 1.5:1 Step-down Auto-Transformer 5 - 1000 MHz

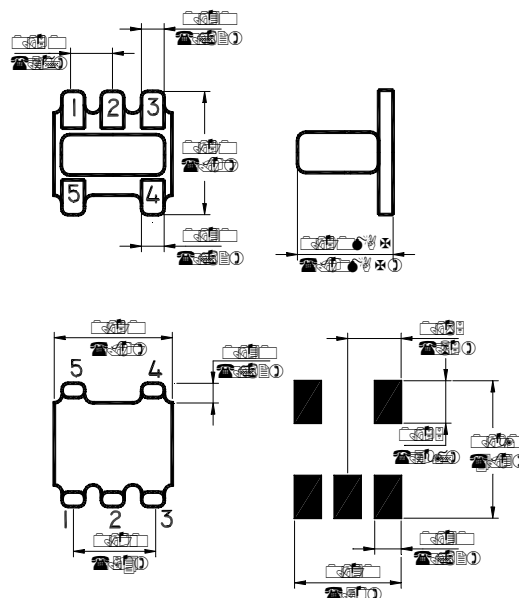


Features

- Surface Mount
- 1.5:1 Impedance Ratio
- Available on Tape & Reel



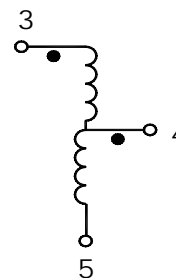
SM-22 Package



Description

M/A-COM's ETC1.5-4 is a 1.5:1 RF step-down auto-transformer in a low cost, surface mount package. Ideally suited for high volume applications.

Schematic



Electrical Specifications @25°C

| Parameter | Units | Nominal | Typical | Minimum | Maximum |
|--------------------------------|-------|---------|---------|---------|---------|
| Frequency Range 5 - 1000 | MHz | — | — | — | — |
| Insertion Loss 5 - 1000 MHz | dB | — | — | — | 1.0 |
| Input Return Loss | dB | — | — | 20 | — |
| Output Return Loss | dB | — | — | 22 | — |

Please Note that the photograph above indicates package shape only, unit may be wired differently.

ADVANCED: Data Sheets contain information regarding a product M/A-COM Technology Solutions is considering for development. Performance is based on target specifications, simulated results, and/or prototype measurements. Commitment to develop is not guaranteed.

PRELIMINARY: Data Sheets contain information regarding a product M/A-COM Technology Solutions has under development. Performance is based on engineering tests. Specifications are typical. Mechanical outline has been fixed. Engineering samples and/or test data may be available. Commitment to produce in volume is not guaranteed.

• **North America** Tel: 800.366.2266 • **Europe** Tel: +353.21.244.6400
• **India** Tel: +91.80.4155721 • **China** Tel: +86.21.2407.1588

Visit www.macomtech.com for additional data sheets and product information.

M/A-COM Technology Solutions Inc. and its affiliates reserve the right to make

Absolute Maximum Ratings

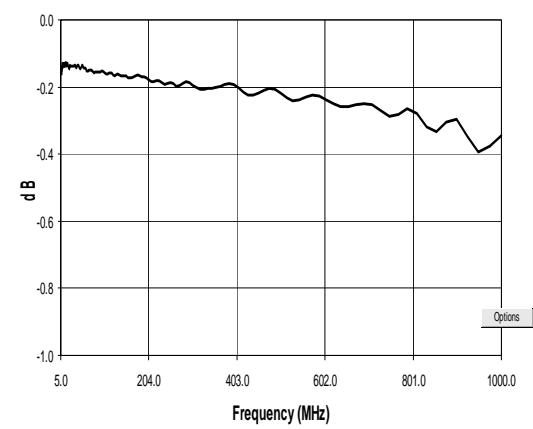
| Parameter | Absolute Maximum |
|---------------------|------------------|
| RF Power | 250 mW |
| DC Current | 100 mA |
| Storage Temperature | -55°C to +100°C |

Functional Configuration

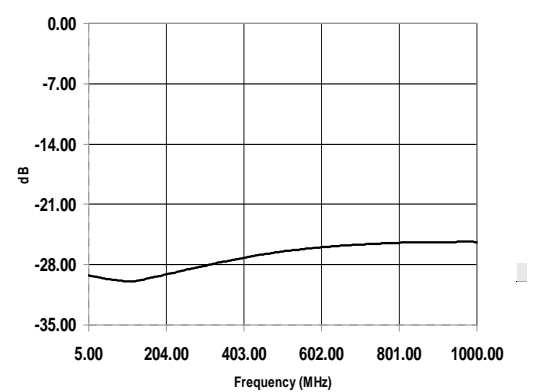
| Function | Pin No. |
|---------------|---------|
| Primary Dot | 5 |
| Primary | 3 |
| Primary CT | — |
| Secondary Dot | 4 |
| Secondary | 3 |
| Secondary CT | — |
| Case Ground | — |
| Not Connected | 1,2 |

Typical Performance @ +25°C

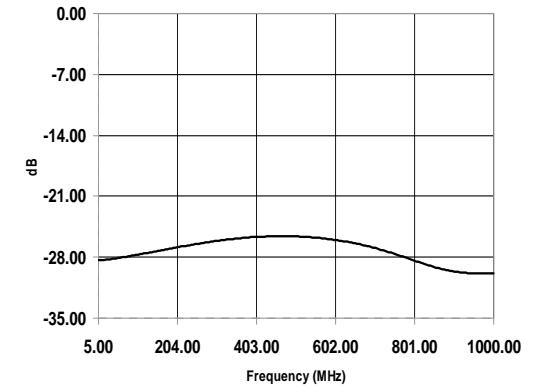
Insertion Loss



Input Return Loss



Output Return Loss



ADVANCED: Data Sheets contain information regarding a product M/A-COM Technology Solutions is considering for development. Performance is based on target specifications, simulated results, and/or prototype measurements. Commitment to develop is not guaranteed.
PRELIMINARY: Data Sheets contain information regarding a product M/A-COM Technology Solutions has under development. Performance is based on engineering tests. Specifications are typical. Mechanical outline has been fixed. Engineering samples and/or test data may be available. Commitment to produce in volume is not guaranteed.

• **North America** Tel: 800.366.2266 • **Europe** Tel: +353.21.244.6400
• **India** Tel: +91.80.4155721 • **China** Tel: +86.21.2407.1588
Visit www.macomtech.com for additional data sheets and product information.

M/A-COM Technology Solutions Inc. and its affiliates reserve the right to make