

# REVISIONS

REV	LTR	DATE	ENG	MKTG	Q.A.
-----	-----	------	-----	------	------

## MAXIMUM CHARACTERISTICS DATA (IX-L)

TURN-ON(@10mA):  
 $\pm 12\text{Vdc}$  TYPICAL  
 UL 497B STRIKE VOLTAGE BREAKDOWN  
 (100 Vdc /SEC RISE):  
 $\pm 10.0$  TO  $\pm 12.4$  Vdc  
 RESISTANCE:  
 $1\Omega \pm 20\%$   
 DATA RATE:  
 UP TO 25Mbps  
 MAX HOLDING CURRENT:  
 400mA @  $+20^\circ\text{C}$   
 620mA @  $-40^\circ\text{C}$   
 290mA @  $+50^\circ\text{C}$   
 235mA @  $+65^\circ\text{C}$

## MAXIMUM CHARACTERISTICS (DC48)

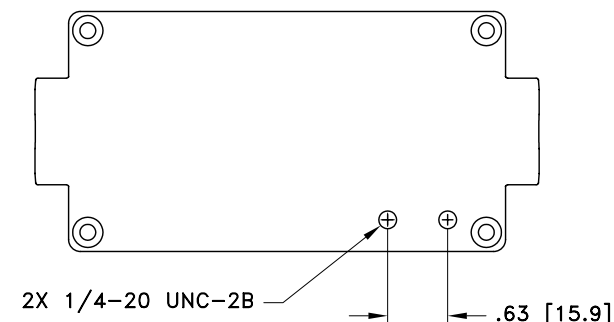
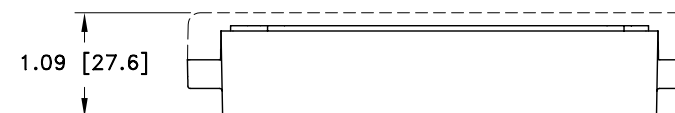
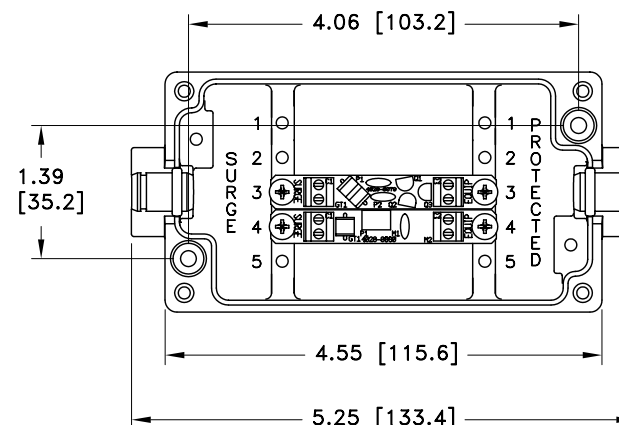
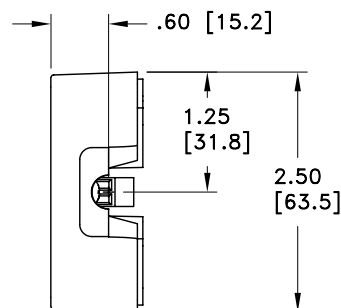
TURN-ON (@10mA):  
 $\pm 56\text{Vdc} \pm 10\%$   
 UL 497B STRIKE VOLTAGE BREAKDOWN  
 (100 Vdc /SEC RISE):  
 $\pm 54.8$  TO  $\pm 58.0$  Vdc  
 RESISTANCE:  
 $.05\Omega \pm 20\%$   
 CURRENT:  
 2A MAX  
 MAX HOLDING CURRENT:  
 3.00A @  $+20^\circ\text{C}$   
 4.13A @  $-40^\circ\text{C}$   
 2.43A @  $+50^\circ\text{C}$   
 2.10A @  $+65^\circ\text{C}$

## GENERAL CHARACTERISTICS

SURGE:  
 BELLCORE 1089 10/1000 $\mu\text{s}$  100A  
 TEMPERATURE:  
 $-40^\circ\text{C}$  TO  $+65^\circ\text{C}$  STORAGE/OPERATING  
 WIRE RANGE:  
 16 TO 28 AWG.  
 CORD DIAMETER:  
 0.114 TO 0.225 INCH W/ SMALL GROMMET  
 0.250 TO 0.350 INCH W/ LARGE GROMMET  
 APPLICATION:  
 PANEL MOUNT.  
 WEATHERIZED AFTER PROPER INSTALLATION OF  
 GROMMETS AND TORQUING OF LID.  
 ENVIRONMENTAL:  
 MEETS BELLCORE #TA-NWT-000487 PROCEDURE 4.11,  
 WIND DRIVEN RAIN (70MPH) RAIN INTRUSION TEST.


## NOTES:

- TORQUE 4X M4-20mm LID SCREWS TO 11lbf-in MINIMUM.
- ENSURE THAT ALL GROMMETS ARE PROPERLY SEATED FOR ENVIRONMENTAL SPECIFICATIONS.



CUSTOMER APPROVAL: \_\_\_\_\_ DATE: \_\_\_\_\_

ALL DIMENSIONS SHOWN ABOVE ARE FOR REFERENCE ONLY.

DRAFTER S. HALL	DATE 08/23/06	 P.O. BOX 9000 MINDEN, NV 89423 TEL: 775-782-2511 FAX: 775-782-4476 DWG NO/PART NO/DESCRIPTION IX-1L1DC48 CUSTOMER PRINT			
MECH ENGINEER M. MATTSO	DATE 09/08/06				
ELEC ENGINEER L. CHANG	DATE 09/29/06				
MARKETING C. POCHECO	DATE 09/21/06				
QUALITY DEPT L. JACQUES	DATE 09/21/06	CAGE CODE 61114	FILE NAME -C1	SCALE NOTED	SHEET 1 OF 1