

REVISIONS

REV	LTR	DATE	ENG	MKTG	Q.A.
A		08/24/06 _{SH}	LC	SD	LJ

MAXIMUM CHARACTERISTICS DATA (IX-T)

TURN-ON(@10mA):
 $\pm 210\text{Vdc}$ TYPICAL
 UL 497B STRIKE VOLTAGE BREAKDOWN
 (100 Vdc /SEC RISE):
 $\pm 190\text{Vdc}$ TO $\pm 260\text{Vdc}$
 RESISTANCE:
 $1\Omega \pm 20\%$
 DATA RATE:
 UP TO 25Mbps
 MAX HOLDING CURRENT:
 400mA @ $+20^\circ\text{C}$
 620mA @ -40°C
 290mA @ $+50^\circ\text{C}$
 235mA @ $+65^\circ\text{C}$

MAXIMUM CHARACTERISTICS (DC12)

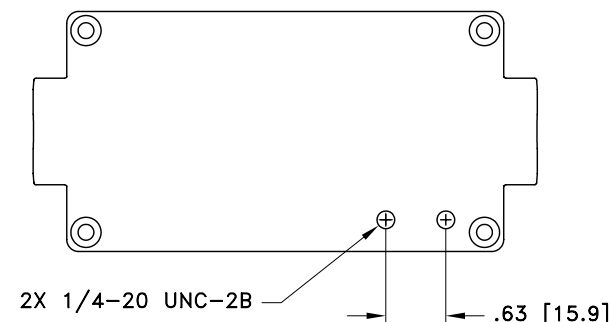
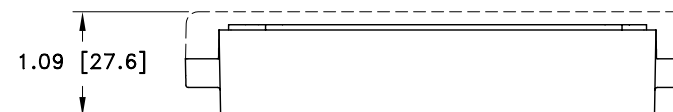
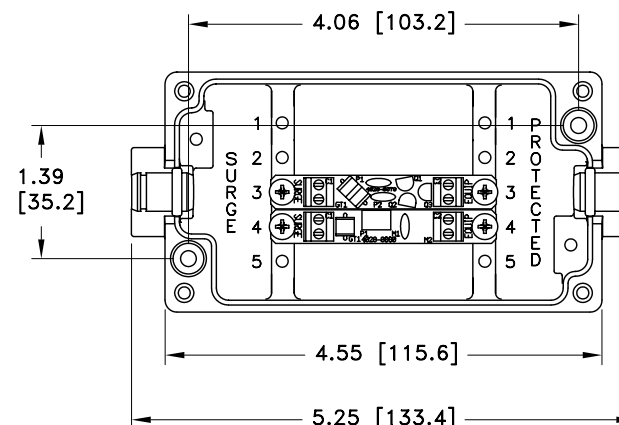
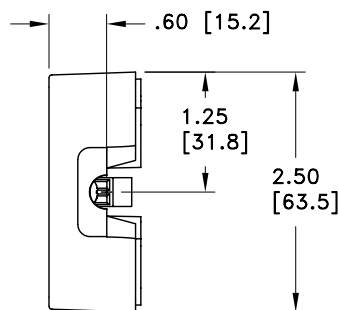
TURN-ON (@10mA):
 $\pm 18\text{Vdc} \pm 10\%$
 UL 497B STRIKE VOLTAGE BREAKDOWN
 (100 Vdc /SEC RISE):
 $\pm 18\text{Vdc}$ TO $\pm 22\text{Vdc}$
 RESISTANCE:
 $.05\Omega \pm 20\%$
 CURRENT:
 2A MAX
 MAX HOLDING CURRENT:
 3.00A @ $+20^\circ\text{C}$
 4.13A @ -40°C
 2.43A @ $+50^\circ\text{C}$
 2.10A @ $+65^\circ\text{C}$

GENERAL CHARACTERISTICS

SURGE:
 BELLCORE 1089 10/1000 μs 100A
 TEMPERATURE:
 -40°C TO $+65^\circ\text{C}$ STORAGE/OPERATING
 WIRE RANGE:
 16 TO 28 AWG.
 CORD DIAMETER:
 0.114 TO 0.225 INCH W/ SMALL GROMMET
 0.250 TO 0.350 INCH W/ LARGE GROMMET
 APPLICATION:
 PANEL MOUNT.
 WEATHERIZED AFTER PROPER INSTALLATION OF
 GROMMETS AND TORQUING OF LID.
 ENVIRONMENTAL:
 MEETS BELLCORE #TA-NWT-000487 PROCEDURE 4.11,
 WIND DRIVEN RAIN (70MPH) RAIN INTRUSION TEST.


NOTES:

- TORQUE 4X M4-20mm LID SCREWS TO 11lbf-in MINIMUM.
- ENSURE THAT ALL GROMMETS ARE PROPERLY SEATED FOR ENVIRONMENTAL SPECIFICATIONS.



CUSTOMER APPROVAL: _____ DATE: _____

ALL DIMENSIONS SHOWN ABOVE ARE FOR REFERENCE ONLY.

DRAFTER R. SWART	DATE 07/26/06	 P.O. BOX 9000 MINDEN, NV 89423 TEL: 775-782-2511 FAX: 775-782-4476 DWG NO/PART NO/DESCRIPTION IX-1T1DC12 CUSTOMER PRINT			
MECH ENGINEER R. DUNNING	DATE 08/02/06				
ELEC ENGINEER L. CHANG	DATE 08/01/06				
MARKETING S. DOTTER	DATE 08/02/06				
QUALITY DEPT L. JACQUES	DATE 08/02/06	CAGE CODE 61114	FILE NAME -C1	SCALE NOTED	SHEET 1 OF 1