

REVISIONS

REV	LTR	DATE	ENG	MKTG	Q.A.
-----	-----	------	-----	------	------

MAXIMUM CHARACTERISTICS DATA (IX-H)

TURN-ON(@10mA):
+9Vdc ±10%
UL 497B STRIKE VOLTAGE
(100 Vdc /SEC RISE):
+8.4 TO +9.6 Vdc
RESISTANCE:
1Ω ±20%
DATA RATE:
UP TO 100Mbps
MAX HOLDING CURRENT:
400mA @ +20°C
620mA @ -40°C
290mA @ +50°C
235mA @ +65°C

MAXIMUM CHARACTERISTICS DATA (IX-M)

TURN-ON(@10mA):
±31Vdc TYPICAL
UL 497B STRIKE VOLTAGE
(100 Vdc /SEC RISE):
±31 TO 32 Vdc
RESISTANCE:
1Ω ±20%
DATA RATE:
UP TO 25Mbps
MAX HOLDING CURRENT:
400mA @ +20°C
620mA @ -40°C
290mA @ +50°C
235mA @ +65°C

MAXIMUM CHARACTERISTICS (DC48)

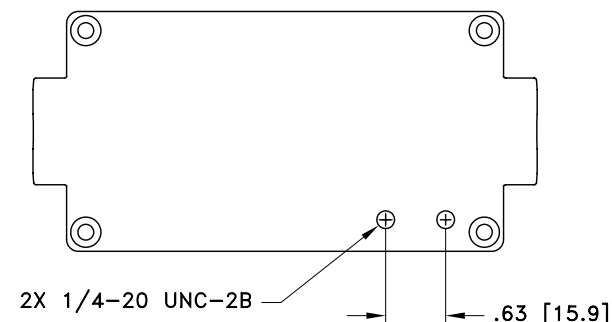
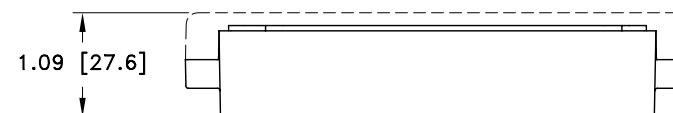
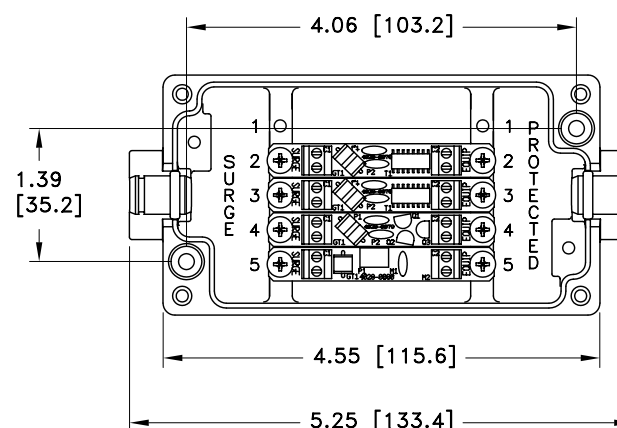
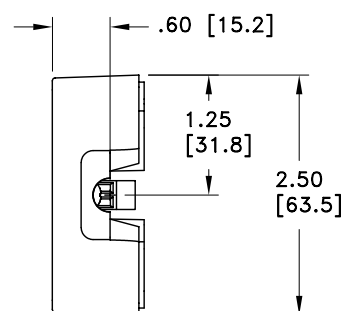
TURN-ON (@10mA):
±56Vdc ±10%
UL 497B STRIKE VOLTAGE BREAKDOWN
(100 Vdc /SEC RISE):
±54.8 TO ±58 Vdc
RESISTANCE:
.05Ω ±20%
CURRENT:
2A MAX
MAX HOLDING CURRENT:
3.00A @ +20°C
4.13A @ -40°C
2.43A @ +50°C
2.10A @ +65°C

GENERAL CHARACTERISTICS

SURGE:
BELLCORE 1089 10/1000μs 100A
TEMPERATURE:
-40°C TO +65°C STORAGE/OPERATING
WIRE RANGE:
16 TO 28 AWG.
CORD DIAMETER:
0.114 TO 0.225 INCH W/ SMALL GROMMET
0.250 TO 0.350 INCH W/ LARGE GROMMET
APPLICATION:
PANEL MOUNT.
WEATHERIZED AFTER PROPER INSTALLATION OF GROMMETS AND TORQUING OF LID.
ENVIRONMENTAL:
MEETS BELLCORE #TA-NWT-000487 PROCEDURE 4.11,
WIND DRIVEN RAIN (70MPH) RAIN INTRUSION TEST.


NOTES:

- TORQUE 4X M4-20mm LID SCREWS TO 11lbf-in MINIMUM.
- ENSURE THAT ALL GROMMETS ARE PROPERLY SEATED FOR ENVIRONMENTAL SPECIFICATIONS.



CUSTOMER APPROVAL: _____ DATE: _____

ALL DIMENSIONS SHOWN ABOVE ARE FOR REFERENCE ONLY.

DRAFTER S. HALL	DATE 08/24/06	 P.O. BOX 9000 MINDEN, NV 89423 TEL: 775-782-2511 FAX: 775-782-4476 DWG NO/PART NO/DESCRIPTION IX-2H1M1DC48 CUSTOMER PRINT			
MECH ENGINEER M. MATTSON	DATE 09/08/06				
ELEC ENGINEER L. CHANG	DATE 09/29/06				
MARKETING C. POCHECO	DATE 09/21/06				
QUALITY DEPT L. JACQUES	DATE 09/21/06	CAGE CODE 61114	FILE NAME -C1	SCALE NOTED	SHEET 1 OF 1