

# REVISIONS

REV	LTR	DATE	ENG	MKTG	Q.A.
-----	-----	------	-----	------	------

## MAXIMUM CHARACTERISTICS DATA (IX-H)

TURN-ON(@10mA):  
+9Vdc ±10%  
UL 497B STRIKE VOLTAGE  
(100 Vdc /SEC RISE):  
+8.4 TO +9.6 Vdc  
RESISTANCE:  
1Ω ±20%  
DATA RATE:  
UP TO 100Mbps  
MAX HOLDING CURRENT:  
400mA @ +20°C  
620mA @ -40°C  
290mA @ +50°C  
235mA @ +65°C

## MAXIMUM CHARACTERISTICS DATA (IX-L)

TURN-ON(@10mA):  
±12Vdc TYPICAL  
UL 497B STRIKE VOLTAGE  
(100 Vdc /SEC RISE):  
±10 TO ±12.4 Vdc  
RESISTANCE:  
1Ω ±20%  
DATA RATE:  
UP TO 25Mbps  
MAX HOLDING CURRENT:  
400mA @ +20°C  
620mA @ -40°C  
290mA @ +50°C  
235mA @ +65°C

## MAXIMUM CHARACTERISTICS (DC48)

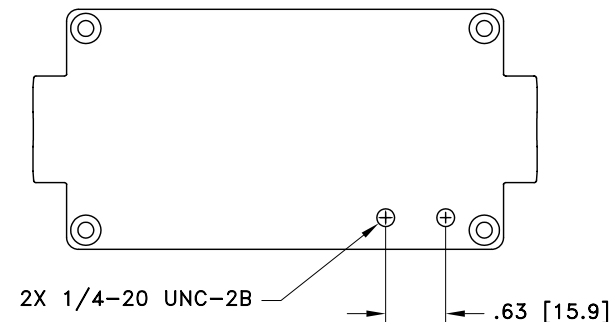
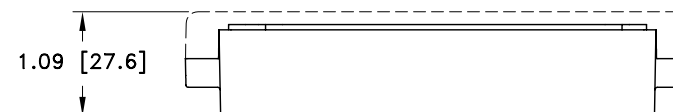
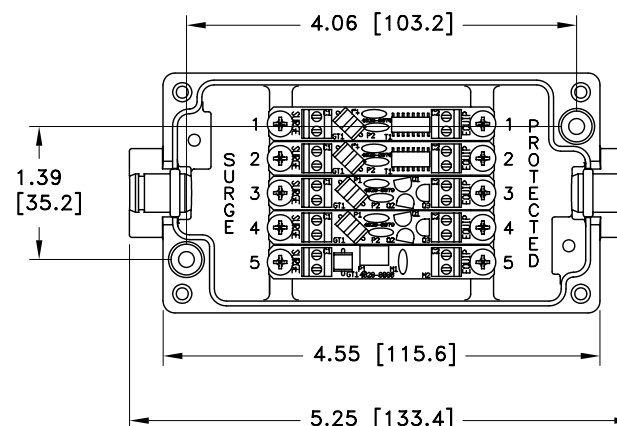
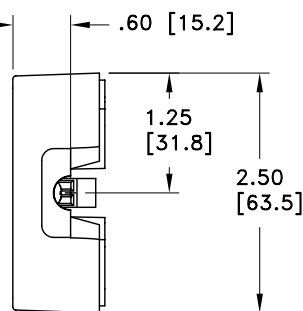
TURN-ON (@10mA):  
±56Vdc ±10%  
UL 497B STRIKE VOLTAGE BREAKDOWN  
(100 Vdc /SEC RISE):  
±54.8 TO ±58 Vdc  
RESISTANCE:  
.05Ω ±20%  
CURRENT:  
2A MAX  
MAX HOLDING CURRENT:  
3.00A @ +20°C  
4.13A @ -40°C  
2.43A @ +50°C  
2.10A @ +65°C

## GENERAL CHARACTERISTICS

SURGE:  
BELLCORE 1089 10/1000μs 100A  
TEMPERATURE:  
-40°C TO +65°C STORAGE/OPERATING  
WIRE RANGE:  
16 TO 28 AWG.  
CORD DIAMETER:  
0.114 TO 0.225 INCH W/ SMALL GROMMET  
0.250 TO 0.350 INCH W/ LARGE GROMMET  
APPLICATION:  
PANEL MOUNT.  
WEATHERIZED AFTER PROPER INSTALLATION OF GROMMETS AND TORQUING OF LID.  
ENVIRONMENTAL:  
MEETS BELLCORE #TA-NWT-000487 PROCEDURE 4.11,  
WIND DRIVEN RAIN (70MPH) RAIN INTRUSION TEST.


## NOTES:

- TORQUE 4X M4-20mm LID SCREWS TO 11lbf-in MINIMUM.
- ENSURE THAT ALL GROMMETS ARE PROPERLY SEATED FOR ENVIRONMENTAL SPECIFICATIONS.



CUSTOMER APPROVAL: \_\_\_\_\_ DATE: \_\_\_\_\_

ALL DIMENSIONS SHOWN ABOVE ARE FOR REFERENCE ONLY.

DRAFTER S. HALL	DATE 08/24/06	 P.O. BOX 9000 MINDEN, NV 89423 TEL: 775-782-2511 FAX: 775-782-4476 DWG NO/PART NO/DESCRIPTION IX-2H2L1DC48 CUSTOMER PRINT			
MECH ENGINEER M. MATTSON	DATE 09/08/06				
ELEC ENGINEER L. CHANG	DATE 09/29/06				
MARKETING C. POCHECO	DATE 09/21/06				
QUALITY DEPT L. JACQUES	DATE 09/21/06	CAGE CODE 61114	FILE NAME -C1	SCALE NOTED	SHEET 1 OF 1