

REVISIONS

REV	LTR	DATE	ENG	MKTG	Q.A.
C		08/28/06 _{SH}	LC	SD	LJ

MAXIMUM CHARACTERISTICS DATA (IX-M)

TURN-ON(@10mA):
 ± 31 Vdc TYPICAL
 UL 497B STRIKE VOLTAGE BREAKDOWN
 (100 Vdc /SEC RISE):
 ± 31 TO ± 32 Vdc
 RESISTANCE:
 $1\Omega \pm 20\%$
 DATA RATE:
 UP TO 25Mbps
 MAX HOLDING CURRENT:
 400mA @ +20°C
 620mA @ -40°C
 290mA @ +50°C
 235mA @ +65°C

MAXIMUM CHARACTERISTICS (DC48)

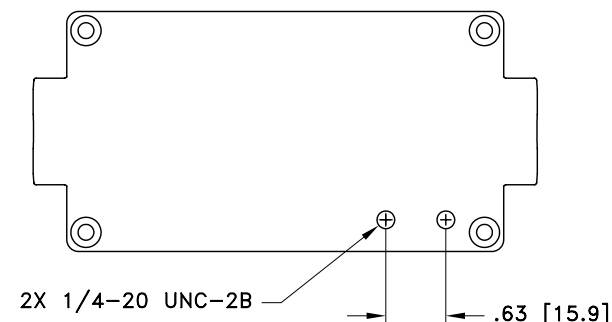
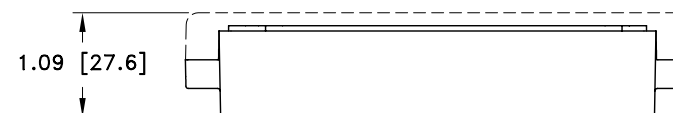
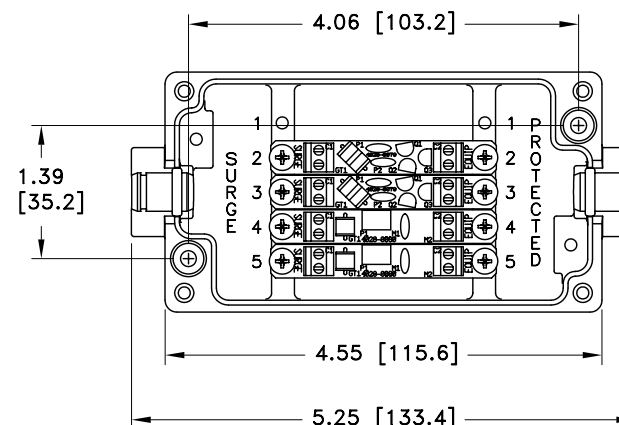
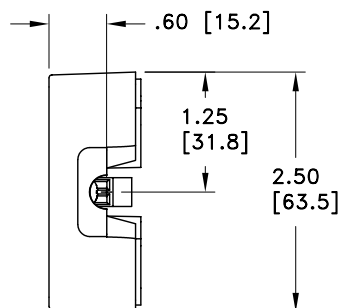
TURN-ON (@10mA):
 ± 56 Vdc $\pm 10\%$
 UL 497B STRIKE VOLTAGE BREAKDOWN
 (100 Vdc /SEC RISE):
 ± 54.8 Vdc TO ± 58.0 Vdc
 RESISTANCE:
 $.05\Omega \pm 20\%$
 CURRENT:
 2A MAX
 MAX HOLDING CURRENT:
 3.00A @ +20°C
 4.13A @ -40°C
 2.43A @ +50°C
 2.10A @ +65°C

GENERAL CHARACTERISTICS

SURGE:
 BELLCORE 1089 10/1000 μ s 100A
 TEMPERATURE:
 -40°C TO +65°C STORAGE/OPERATING
 WIRE RANGE:
 16 TO 28 AWG.
 CORD DIAMETER:
 0.114 TO 0.225 INCH W/ SMALL GROMMET
 0.250 TO 0.350 INCH W/ LARGE GROMMET
 APPLICATION:
 PANEL MOUNT.
 WEATHERIZED AFTER PROPER INSTALLATION OF
 GROMMETS AND TORQUING OF LID.
 ENVIRONMENTAL:
 MEETS BELLCORE #TA-NWT-000487 PROCEDURE 4.11,
 WIND DRIVEN RAIN (70MPH) RAIN INTRUSION TEST.


NOTES:

- TORQUE 4X M4-20mm LID SCREWS TO 11lbf-in MINIMUM.
- ENSURE THAT ALL GROMMETS ARE PROPERLY SEATED FOR ENVIRONMENTAL SPECIFICATIONS.



CUSTOMER APPROVAL: _____ DATE: _____

ALL DIMENSIONS SHOWN ABOVE ARE FOR REFERENCE ONLY.

DRAFTER S. HALL	DATE 05/29/03	 P.O. BOX 9000 MINDEN, NV 89423 TEL: 775-782-2511 FAX: 775-782-4476 DWG NO/PART NO/DESCRIPTION IX-2M2DC48 CUSTOMER PRINT			
MECH ENGINEER R. DUNNING	DATE 07/09/03				
ELEC ENGINEER L. CHANG	DATE 07/01/03				
MARKETING S. DOTTER	DATE 07/08/03				
QUALITY DEPT L. JACQUES	DATE 07/08/03	CAGE CODE 61114	FILE NAME -C1	SCALE NOTED	SHEET 1 OF 1