

# ADAPTERS, BETWEEN SERIES TYPE N / SMA

## DC - 6 GHz BULKHEAD MOUNT



MODELS: 5350

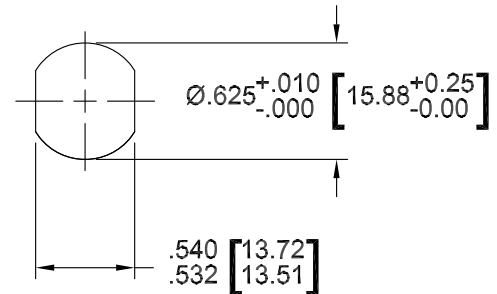
### SPECIFICATIONS:

#### Electrical:

Frequency Range \_\_\_\_\_ DC — 6.0 GHz  
VSWR:  
DC — 4 GHz \_\_\_\_\_ 1.05:1 Max.  
4 — 6 GHz \_\_\_\_\_ 1.10:1 Max.  
Impedance \_\_\_\_\_ 50 Ohms  
Operating Temp. Range \_\_\_\_\_ -65°C to +125°C

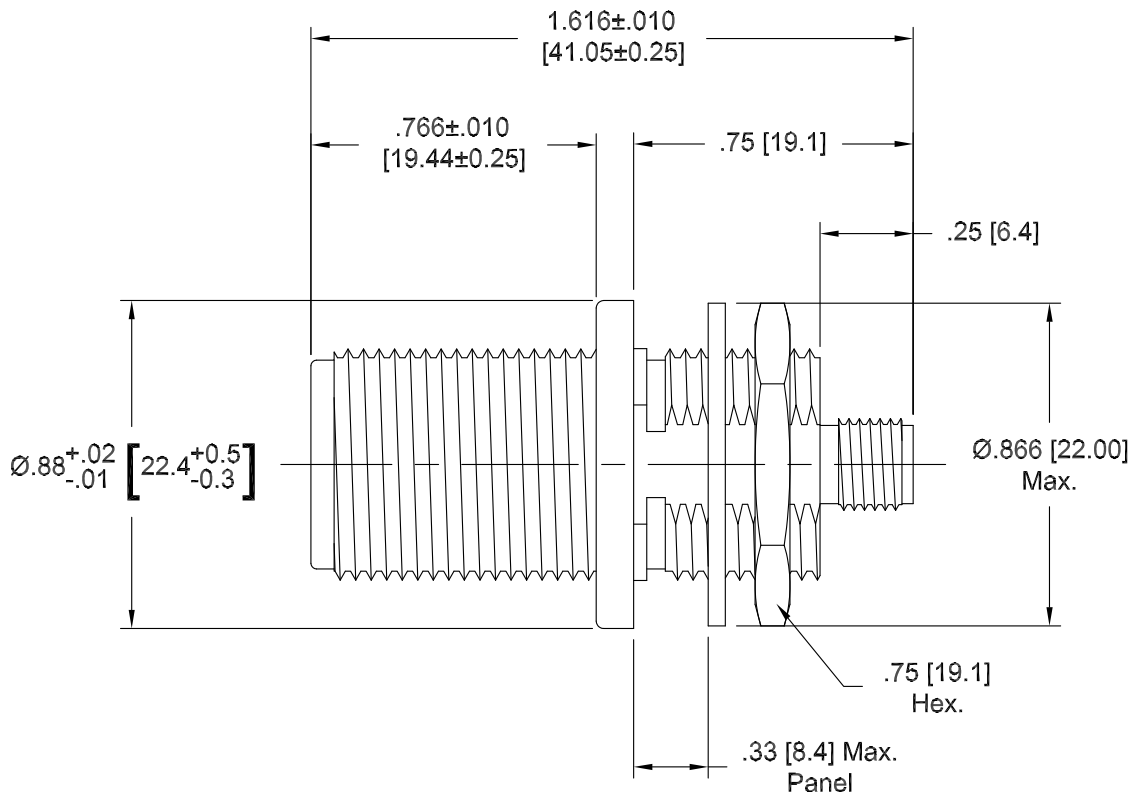
#### Mechanical:

Connectors \_\_\_\_\_ Nickel Plated Brass  
(Mates with MIL-STD-348)  
Conductors \_\_\_\_\_ Gold Plated Beryllium Copper  
Nut & Washer \_\_\_\_\_ Passivated Stainless Steel



Recommended Panel  
Configuration

Model Number: **5350**  
Type N Female / SMA Female  
No O-Ring Included



Panel Nut and Lock Washer are Shipped Unassembled.

Note: Dimensions in Brackets are Expressed in Millimeters and are for Reference Only.  
Design specifications are subject to change without notice.  
Contact factory for technical specifications before purchasing or use.

5350; REV A

300 Dino Drive • Ann Arbor, MI 48103-9457 U.S.A. • 888-244-6638 or 734-426-5553 • FAX 734-426-5557 • [www.aeroflex-inmet.com](http://www.aeroflex-inmet.com)