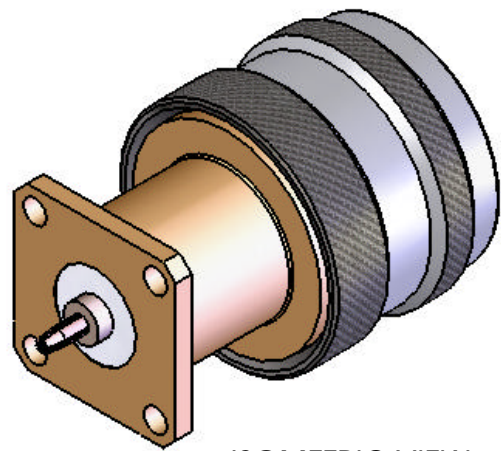
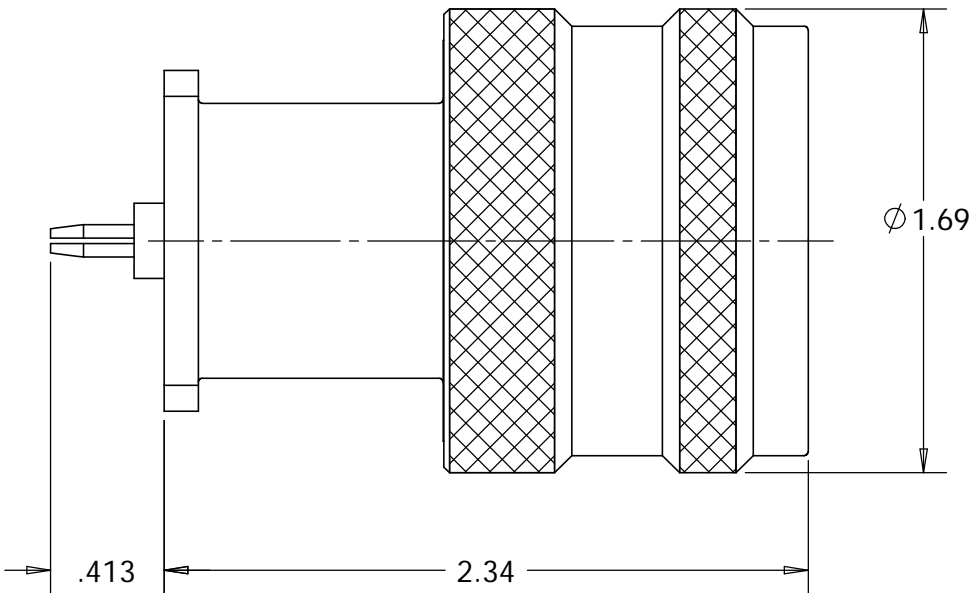
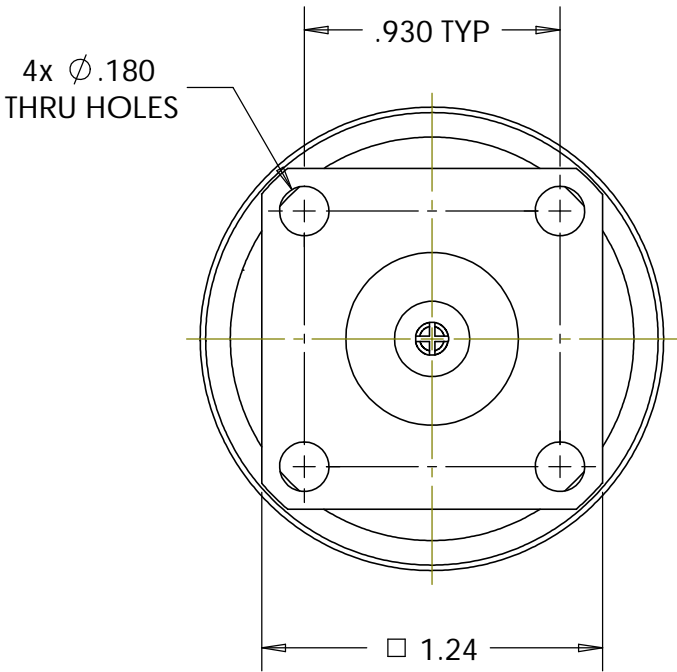


This document, including the design, configuration and mechanical features revealed herein are the sole, confidential and proprietary property of TRU Corporation. Reproduction or use thereof, in whole or part, is prohibited without the prior written consent of TRU Corporation.

REV.	DESCRIPTION	DATE	APPROVED
-	ORIGINAL ISSUE	7/16/07	WWW



ISOMETRIC VIEW  
SCALE 1:1



ENGINEERING DATA:

ELECTRICAL:  
IMPEDANCE: 50 NOMINAL


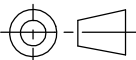
MECHANICAL:  
INTERFACE: SQS(m) PER TRU SPEC  
QC(m) PER TRU SPEC

MATERIAL:  
O-RING: SILICONE RUBBER PER A-A-59588A, CLASS 2A, GRADE 50  
INSULATOR: TEFLON PER ASTM-D1710, I1A  
QC(m) CONTACT: BERYLLIUM COPPER C17300, TD04 (H) PER ASTM-B196  
CONTACT FINGERS: BERYLLIUM COPPER C17300, TD04 (H) PER ASTM-B196  
SQS(m) CONTACT: BRASS C36000, H02 PER ASTM-B16  
OTHER METAL PARTS: BRASS C36000, H02 PER ASTM-B16

FINISH:  
CONTACTS: SILVER PLATED  
OTHER METAL PARTS: NICKEL PLATED

NOTES:  
1. UNLESS OTHERWISE SPECIFIED; ALL  
DIMENSIONS ARE REFERENCE ONLY.

2. PRODUCT COMPLIES WITH ROHS DIRECTIVE 2002/95/EC.

MATERIAL	DO NOT SCALE DRAWING	DRAWN Warren Whitten	DATE 5/15/07	 <b>TRU CORPORATION</b> 245 LYNNFIELD STREET, PEABODY, MA 01960 The Custom Interconnect Leader™			
	UNLESS OTHERWISE SPECIFIED: DIMENSIONS ARE IN INCHES	ENG APPR. AM	DATE 7/16/07	TITLE:  CONNECTOR, COAXIAL, RF SQS(m) to QC(m) ADAPTER			
	TOLERANCES: FRACTIONS: ±1/64 .XX : ±.01 .XXX: ±.005 ANGLES: ±1/2° MACHINED SURFACES:  63/	MFG APPR.	DATE				
	COMMENTS:	THIRD ANGLE PROJECTION 	OTHER APPR.	DATE	SIZE <b>B</b>	DWG. NO.  TRU-15002	REV -
surface area: sq inch			weight: lbs		CAGE CODE: 92180		SCALE: 1.5:1