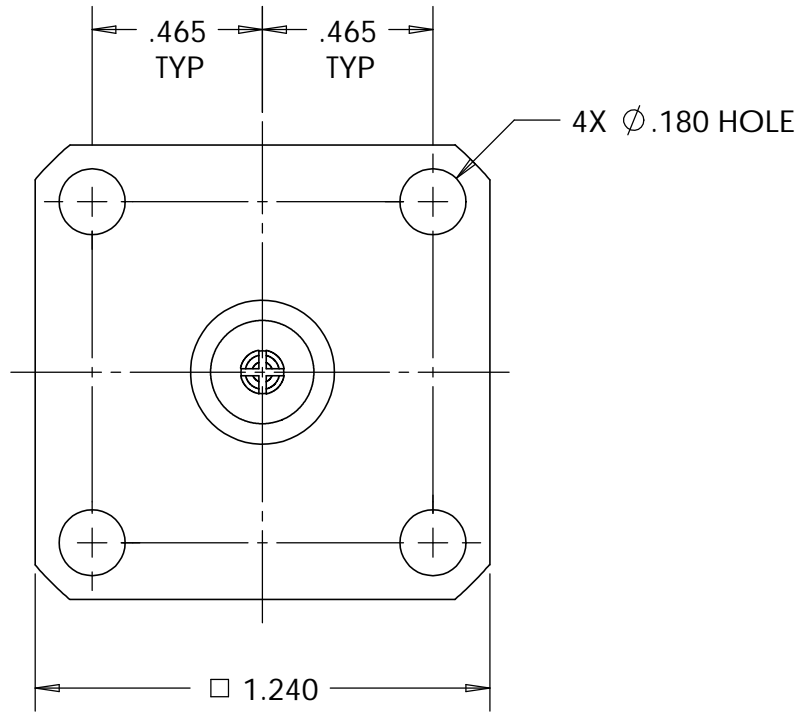
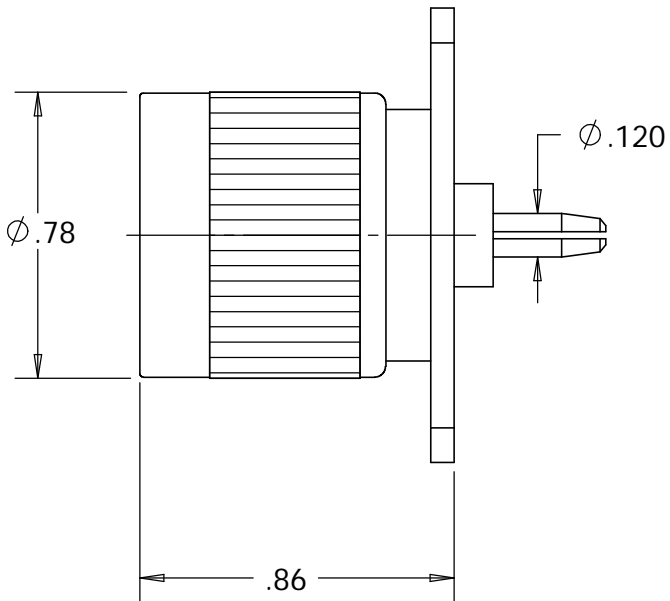
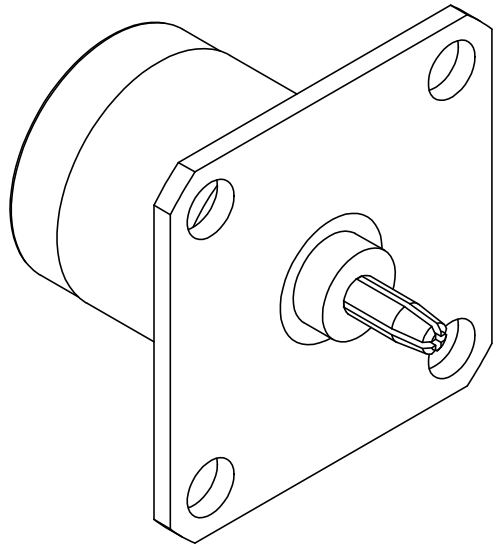


This document, including the design, configuration and mechanical features revealed herein are the sole, confidential and proprietary property of TRU Corporation. Reproduction or use thereof, in whole or part, is prohibited without the prior written consent of TRU Corporation.

REV.	DESCRIPTION	DATE	APPROVED
-	ORIGINAL ISSUE	6/14/07	WWW



ENGINEERING DATA:


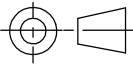
ELECTRICAL:
IMPEDANCE: 50 OHMS NOMINAL

MECHANICAL:
INTERFACE: N(m) PER MIL-STD-348 FIG. 304.1
QC(m) PER TRU SPEC

MATERIAL:
GASKET: SILICONE RUBBER
INSULATOR: PTFE (TEFLON) PER ASTM-D1710, I1A
OUTER CONTACT: PHOSPHOR BRONZE C54400, H04 PER ASTM-B139
INNER CONTACT: BERYLLIUM COPPER C17300, TD04 (H) PER ASTM-B196
OTHER METAL PARTS: BRASS C36000, H02 PER ASTM-B16

FINISH:
CONTACTS: SILVER PLATED
OTHER METAL PARTS: NICKEL PLATED

NOTES:
1. UNLESS OTHERWISE SPECIFIED; ALL DIMENSIONS ARE REFERENCE ONLY.
2. PRODUCT COMPLIES WITH ROHS DIRECTIVE 2002/95/EC.

MATERIAL	DO NOT SCALE DRAWING	DRAWN Warren Whitten	DATE 5/17/07	<div>TRU CORPORATION 245 LYNNFIELD STREET, PEABODY, MA 01960 The Custom Interconnect Leader™</div>			
	UNLESS OTHERWISE SPECIFIED: DIMENSIONS ARE IN INCHES TOLERANCES: FRACTIONS: ±1/64 .XX : ±.01 .XXX: ±.005 ANGLES: ±1/2° MACHINED SURFACES: 63/	ENG APPR. AM	DATE 6/14/07	TITLE: CONNECTOR ASSEMBLY N(m) to QC(m) ADAPTER STR			
		MFG APPR.	DATE				
		OTHER APPR.	DATE				
COMMENTS:	THIRD ANGLE PROJECTION 	SIZE B		DWG. NO. TRU-15007		REV -	
		CAGE CODE: 92180		SCALE: 2:1	SHEET 1 OF 1		
surface area: sq inch		weight: lbs					