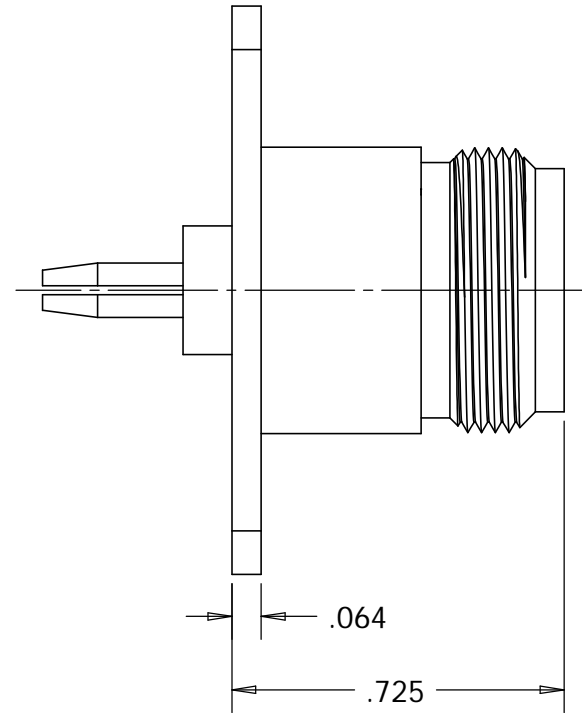
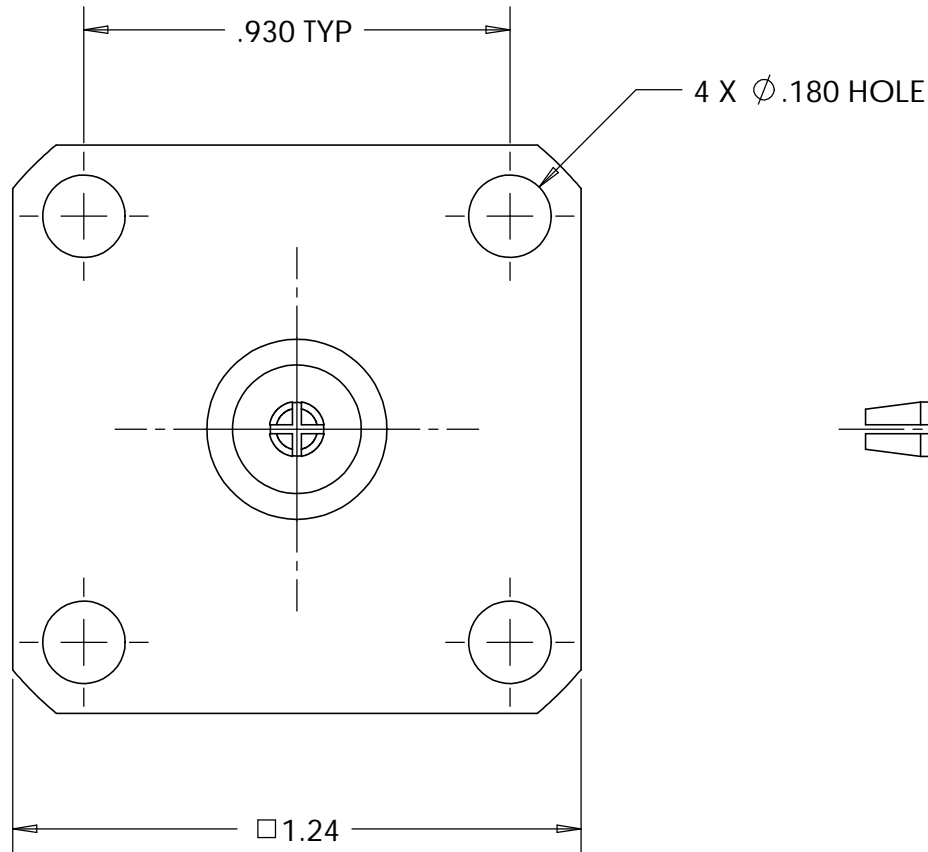
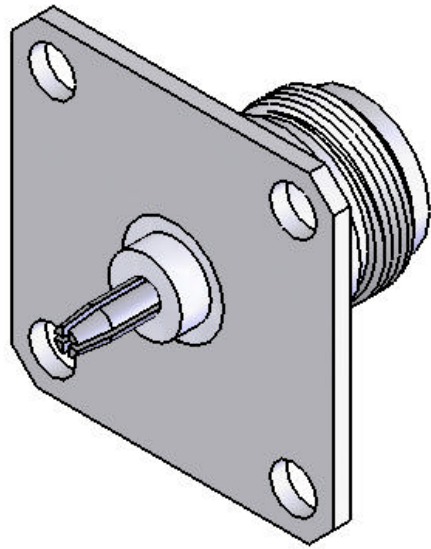


This document, including the design, configuration and mechanical features revealed herein are the sole, confidential and proprietary property of TRU Corporation. Reproduction or use thereof, in whole or part, is prohibited without the prior written consent of TRU Corporation.

REV.	DESCRIPTION	DATE	APPROVED
-	ORIGINAL ISSUE	6/22/07	WWW



ENGINEERING DATA:


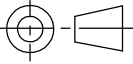
ELECTRICAL:  
IMPEDANCE: 50 OHMS NOMINAL

MECHANICAL:  
INTERFACE: N(f) PER MIL-STD-348 FIG.304.2  
QC(m) PER TRU SPEC

MATERIAL:  
INSULATOR: PTFE (TEFLON) PER ASTM-D1710, I1A  
CONTACT: BERYLLIUM COPPER C17300, TD04 PER ASTM-B196  
HOUSING: BRASS C36000, H02 PER ASTM-B16

FINISH:  
CONTACT: SILVER PLATED  
HOUSING: NICKEL PLATED

- NOTES:
- UNLESS OTHERWISE SPECIFIED; ALL DIMENSIONS ARE REFERENCE ONLY.
  - PRODUCT COMPLIES WITH RoHS DIRECTIVE 2002/95/EC.

MATERIAL	DO NOT SCALE DRAWING	DRAWN AM	DATE 06/19/07	 <b>TRU CORPORATION</b> 245 LYNNFIELD STREET, PEABODY, MA 01960 The Custom Interconnect Leader™		
	UNLESS OTHERWISE SPECIFIED: DIMENSIONS ARE IN INCHES  TOLERANCES: FRACTIONS: $\pm 1/64$ .XX : $\pm .01$ .XXX: $\pm .005$ ANGLES: $\pm 1/2^\circ$ MACHINED SURFACES:  63/	ENG APPR. AM	DATE 6/19/07			
		MFG APPR.	DATE			
		OTHER APPR. RMK	DATE 6/19/07			
COMMENTS:	THIRD ANGLE PROJECTION 			TITLE: COAXIAL CONNECTOR N(f) to QC(m)		
	surface area: sq inch      weight: 0.07 lbs			SIZE <b>B</b>	DWG. NO. TRU-15010	REV -
		CAGE CODE: 92180		SCALE: 5:2	SHEET 1 OF 1	