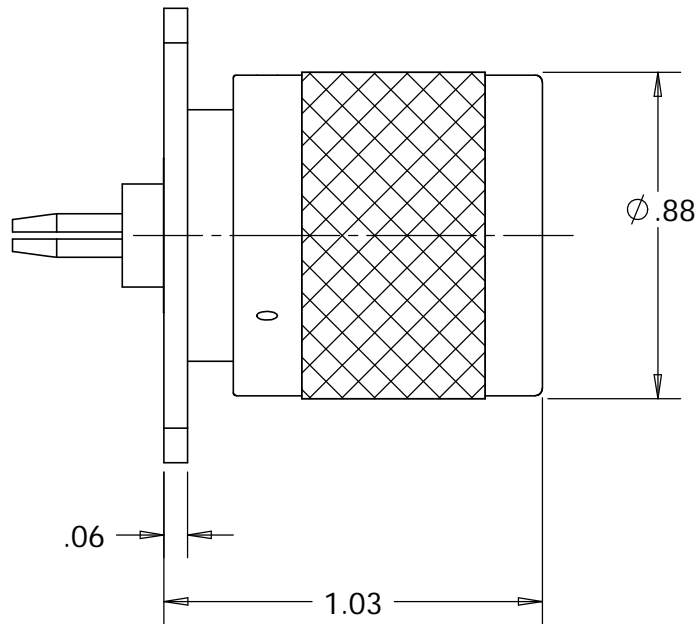
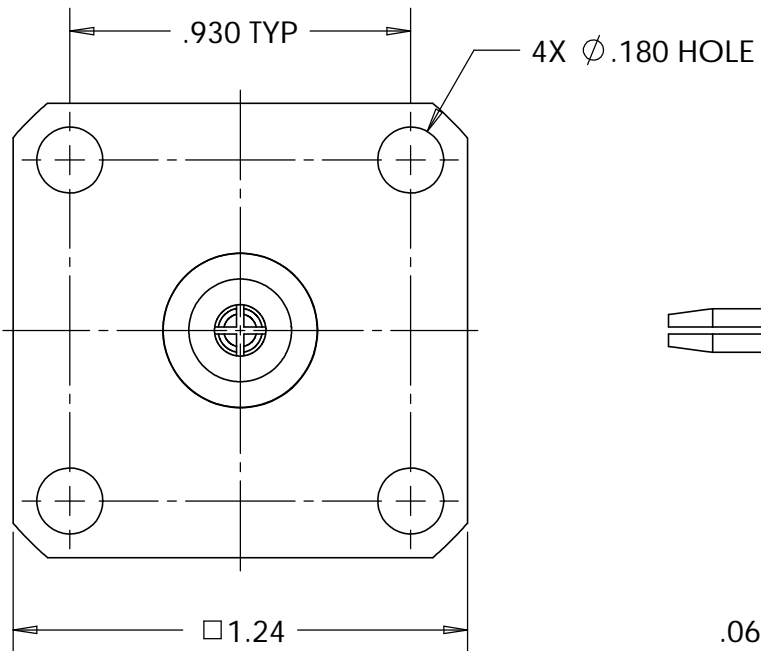
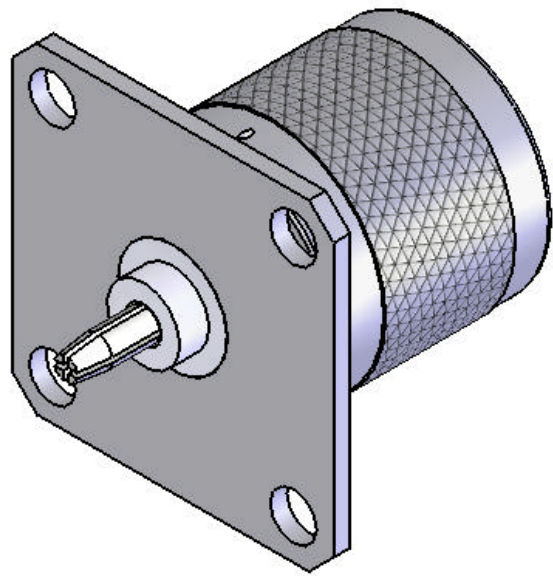


This document, including the design, configuration and mechanical features revealed herein are the sole, confidential and proprietary property of TRU Corporation. Reproduction or use thereof, in whole or part, is prohibited without the prior written consent of TRU Corporation.

REV.	DESCRIPTION	DATE	APPROVED
-	ORIGINAL ISSUE	6/26/07	WWW



ENGINEERING DATA:

ELECTRICAL:
IMPEDANCE: 50 OHMS NOMINAL


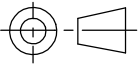
MECHANICAL:
INTERFACE: HN(m) PER MIL-STD-348A, FIG. 317.1
QC(m) PER TRU SPEC

MATERIAL:
INSULATOR: PTFE (TEFLON) PER ASTM-D1710, I1A
CONTACTS: BERYLLIUM COPPER C17300, TD04 (H) PER ASTM-B196
OTHER METAL PARTS: BRASS C36000, H02 PER ASTM-B16

FINISH:
CONTACTS: SILVER PLATED
OTHER METAL PARTS: NICKEL PLATED

NOTES:
1. UNLESS OTHERWISE SPECIFIED; ALL
DIMENSIONS ARE REFERENCE ONLY.

2. PRODUCT COMPLIES WITH ROHS DIRECTIVE 2002/95/EC.

MATERIAL	DO NOT SCALE DRAWING		DRAWN	DATE	<div>TRU CORPORATION 245 LYNNFIELD STREET, PEABODY, MA 01960 <small>The Custom Interconnect Leader™</small></div>		
	UNLESS OTHERWISE SPECIFIED: DIMENSIONS ARE IN INCHES		Warren Whitten	6/22/07			
	TOLERANCES:		ENG APPR.	DATE			
	FRACTIONS: $\pm 1/64$.XX : $\pm .01$.XXX: $\pm .005$ ANGLES: $\pm 1/2^\circ$ MACHINED SURFACES:		AM	6/25/07			
COMMENTS:			MFG APPR.	DATE	TITLE: CONNECTOR, COAXIAL, RF HN(m) to QC(m) ADAPTER		
			OTHER APPR.	DATE			
			THIRD ANGLE PROJECTION		SIZE	DWG. NO.	REV
					B	TRU-15013	-
surface area: sq inch		weight: lbs			CAGE CODE: 92180		SCALE: 2:1
					SHEET 1 OF 1		