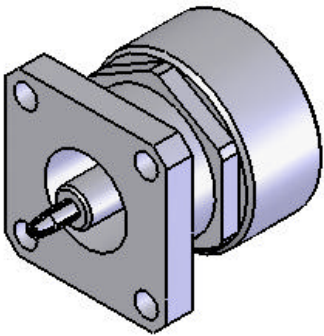
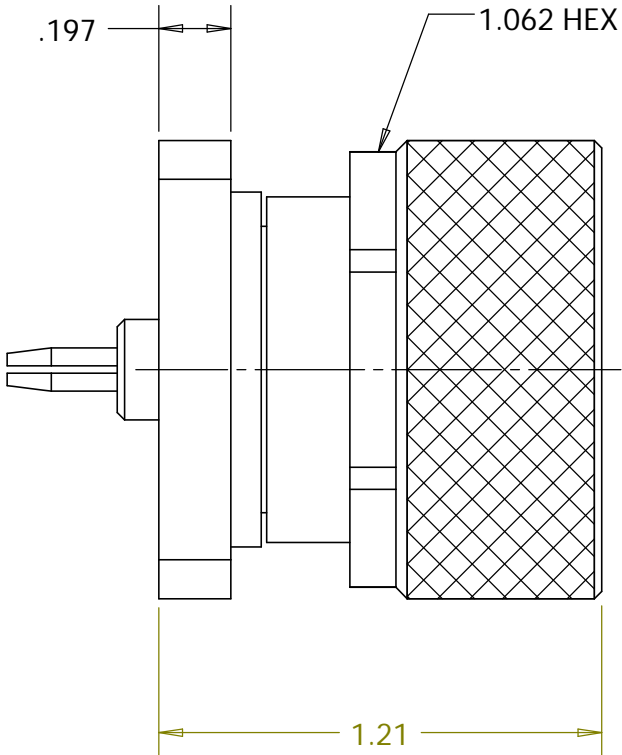
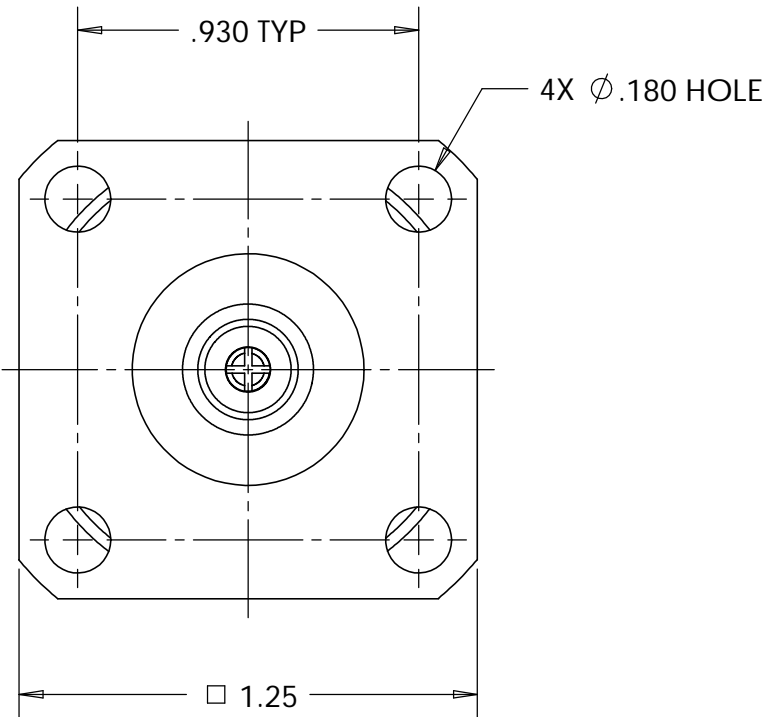


This document, including the design, configuration and mechanical features revealed herein are the sole, confidential and proprietary property of TRU Corporation. Reproduction or use thereof, in whole or part, is prohibited without the prior written consent of TRU Corporation.

REV.	DESCRIPTION	DATE	APPROVED
-	ORIGINAL ISSUE	6/22/07	WWW



ISOMETRIC VIEW
SCALE 1:1



ENGINEERING DATA:


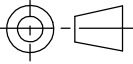
ELECTRICAL:
IMPEDANCE: 50 OHMS NOMINAL

MECHANICAL:
INTERFACE: 7-16(m) PER IEC 169-4, DIN 47223
QC(m) PER TRU SPEC

MATERIAL:
GASKET: SILICONE RUBBER PER A-A-59588A
INSULATOR: PTFE (TEFLON) PER ASTM-D1710, I1A
QC(m) CONTACT: BERYLLIUM COPPER C17300, TD04 (H) PER ASTM-B196
7-16(m) CONTACT: BRASS C36000, H02 PER ASTM-B16
OTHER METAL PARTS: BRASS C36000, H02 PER ASTM-B16

FINISH:
CONTACTS: SILVER PLATED
OTHER METAL PARTS: NICKEL PLATED

NOTES:
1. UNLESS OTHERWISE SPECIFIED; ALL DIMENSIONS ARE REFERENCE ONLY.
2. PRODUCT COMPLIES WITH ROHS DIRECTIVE 2002/95/EC.

MATERIAL	DO NOT SCALE DRAWING	DRAWN Warren Whitten	DATE 5/29/07	 TRU CORPORATION 245 LYNNFIELD STREET, PEABODY, MA 01960 <small>The Custom Interconnect Leader™</small>		
	UNLESS OTHERWISE SPECIFIED: DIMENSIONS ARE IN INCHES	ENG APPR. AM	DATE 6/15/07			
	TOLERANCES: FRACTIONS: $\pm 1/64$.XX : $\pm .01$.XXX: $\pm .005$ ANGLES: $\pm 1/2^\circ$	MFG APPR.	DATE	TITLE: CONNECTOR, COAXIAL, RF 7-16(m) to QC(m) ADAPTER		
	MACHINED SURFACES: 63/	OTHER APPR.	DATE			
COMMENTS:	THIRD ANGLE PROJECTION 			SIZE B	DWG. NO. TRU-15016	REV -
surface area: sq inch	weight: lbs	CAGE CODE: 92180		SCALE: 2:1		SHEET 1 OF 1