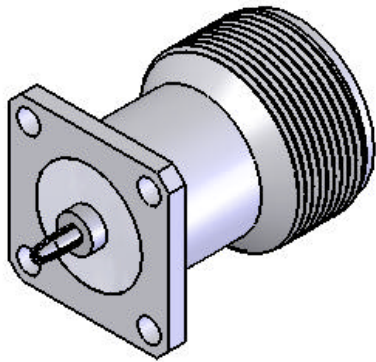
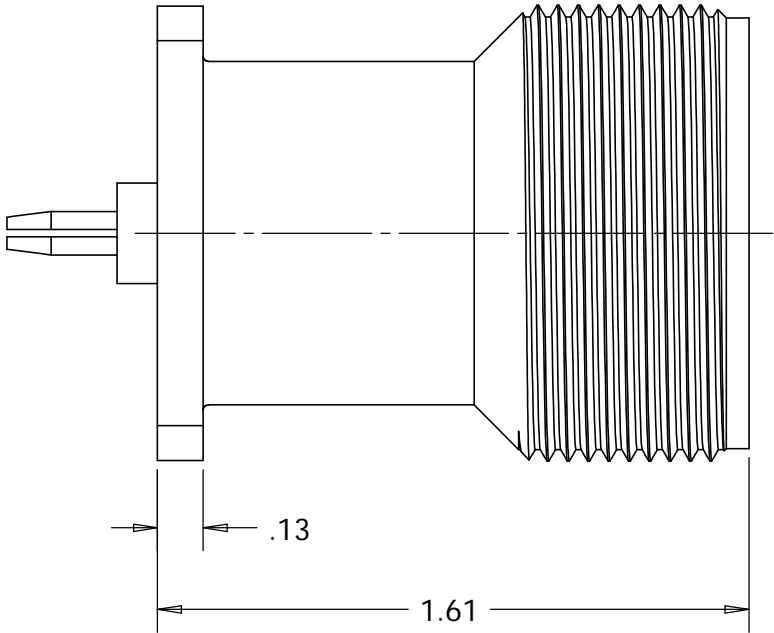
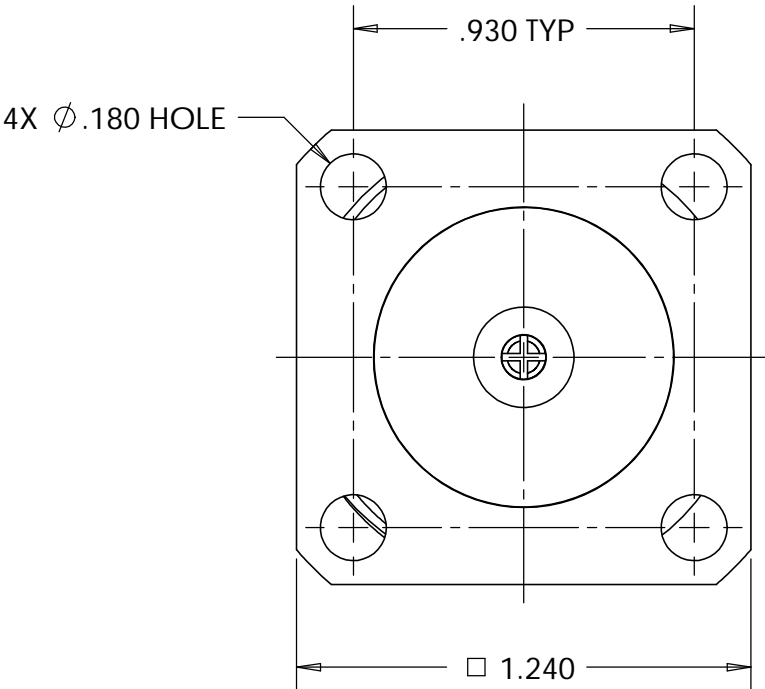


This document, including the design, configuration and mechanical features revealed herein are the sole, confidential and proprietary property of TRU Corporation. Reproduction or use thereof, in whole or part, is prohibited without the prior written consent of TRU Corporation.

REV.	DESCRIPTION	DATE	APPROVED
-	ORIGINAL ISSUE	6/26/07	WWW



ISOMETRIC VIEW
SCALE 1:1



ENGINEERING DATA:


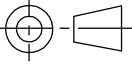
ELECTRICAL:
IMPEDANCE: 50 OHMS NOMINAL

MECHANICAL:
INTERFACE: LC(f) PER MIL-STD-348A, FIG. 315.2
QC(m) PER TRU SPEC

MATERIAL:
INSULATOR: PTFE (TEFLON) PER ASTM-D1710, I1A
CONTACTS: BERYLLIUM COPPER C17300, TD04 (H) PER ASTM-B196
BODY: BRASS C36000, H02 PER ASTM-B16

FINISH:
CONTACTS: SILVER PLATED
BODY: NICKEL PLATED

- NOTES:
1. UNLESS OTHERWISE SPECIFIED; ALL DIMENSIONS ARE REFERENCE ONLY.
 2. PRODUCT COMPLIES WITH ROHS DIRECTIVE 2002/95/EC.

MATERIAL	DO NOT SCALE DRAWING	DRAWN Warren Whitten	DATE 6/20/07	<div>TRU CORPORATION 245 LYNNFIELD STREET, PEABODY, MA 01960 The Custom Interconnect Leader™</div> <div>TITLE: CONNECTOR, COAXIAL, RF LC(f) to QC(m) ADAPTER</div>		
	UNLESS OTHERWISE SPECIFIED: DIMENSIONS ARE IN INCHES TOLERANCES: FRACTIONS: $\pm 1/64$.XX : $\pm .01$.XXX: $\pm .005$ ANGLES: $\pm 1/2^\circ$ MACHINED SURFACES: 63/	ENG APPR. AM	DATE 6/25/07			
		MFG APPR.	DATE			
		OTHER APPR.	DATE			
COMMENTS:	THIRD ANGLE PROJECTION 			SIZE B	DWG. NO. TRU-15019	REV -
				CAGE CODE: 92180	SCALE: 2:1	SHEET 1 OF 1
surface area: sq inch	weight: 0.27 lbs					