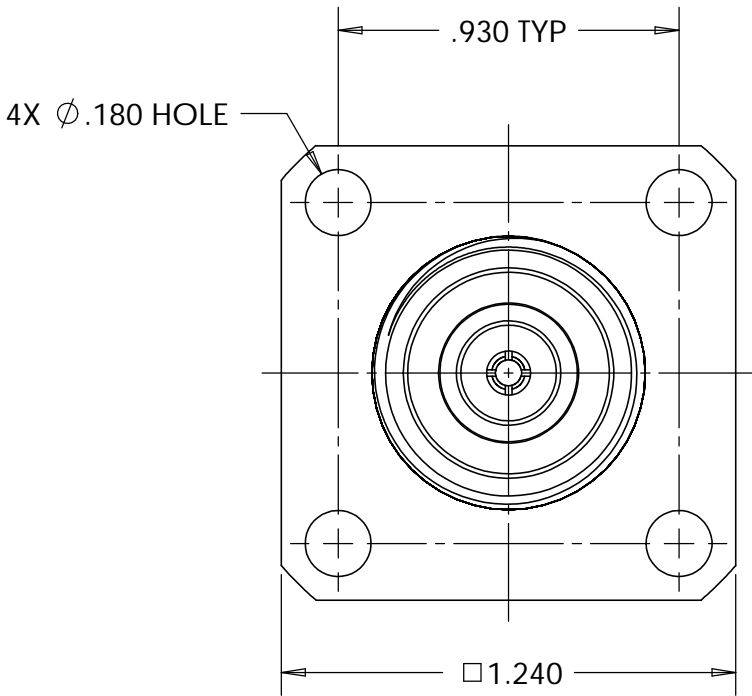
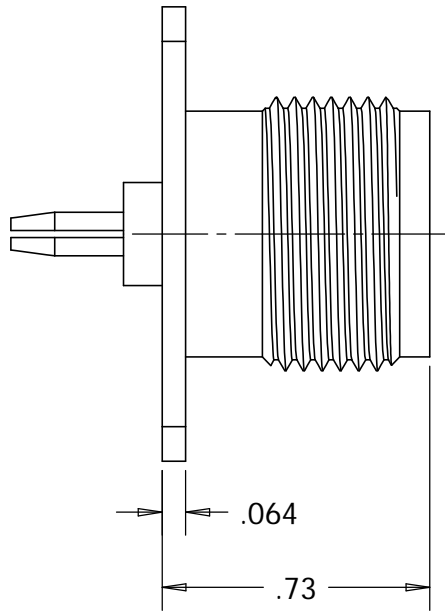
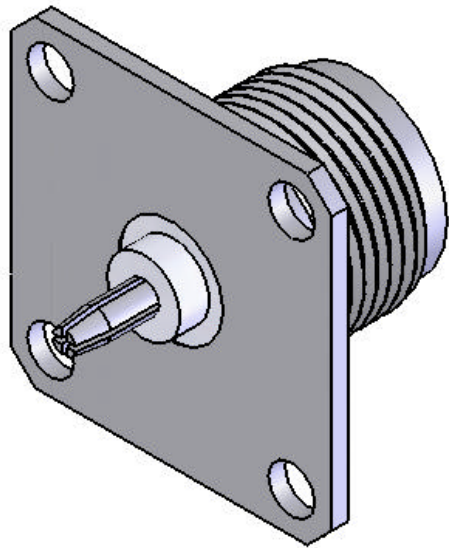


This document, including the design, configuration and mechanical features revealed herein are the sole, confidential and proprietary property of TRU Corporation. Reproduction or use thereof, in whole or part, is prohibited without the prior written consent of TRU Corporation.

REV.	DESCRIPTION	DATE	APPROVED
-	ORIGINAL ISSUE	7/16/07	WWW



ENGINEERING DATA:

ELECTRICAL:  
IMPEDANCE: 50 OHMS NOMINAL


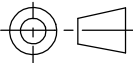
MECHANICAL:  
INTERFACE: HN(f) PER MIL-STD-348A, FIG 317.2  
QC(m) PER TRU SPEC

MATERIAL:  
INSULATOR: PTFE (TEFLON) PER ASTM-D1710, I1A  
CONTACT: BERYLLIUM COPPER C17300, TD04 (H) PER ASTM-B196  
BODY: BRASS C36000, H02 PER ASTM-B16

FINISH:  
CONTACT: SILVER PLATED  
BODY: NICKEL PLATED

NOTES:  
1. UNLESS OTHERWISE SPECIFIED; ALL  
DIMENSIONS ARE REFERENCE ONLY.

2. PRODUCT COMPLIES WITH ROHS DIRECTIVE 2002/95/EC.

MATERIAL	DO NOT SCALE DRAWING	DRAWN Warren Whitten	DATE 6/19/07	 <b>TRU CORPORATION</b> 245 LYNNFIELD STREET, PEABODY, MA 01960 The Custom Interconnect Leader™			
	UNLESS OTHERWISE SPECIFIED: DIMENSIONS ARE IN INCHES  TOLERANCES: FRACTIONS: ±1/64 .XX : ±.01 .XXX: ±.005 ANGLES: ±1/2° MACHINED SURFACES:  63/✓	ENG APPR. AM	DATE 7/16/07	TITLE:  CONNECTOR, COAXIAL, RF HN(f) to QC(m)			
		MFG APPR.	DATE				
		OTHER APPR.	DATE				
COMMENTS:		THIRD ANGLE PROJECTION 		SIZE <b>B</b>	DWG. NO.  TRU-15022		REV -
				CAGE CODE: 92180		SCALE: 2:1	SHEET 1 OF 1
surface area: sq inch		weight: 0.06 lbs					