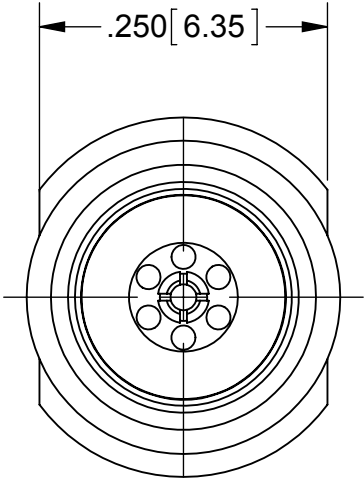
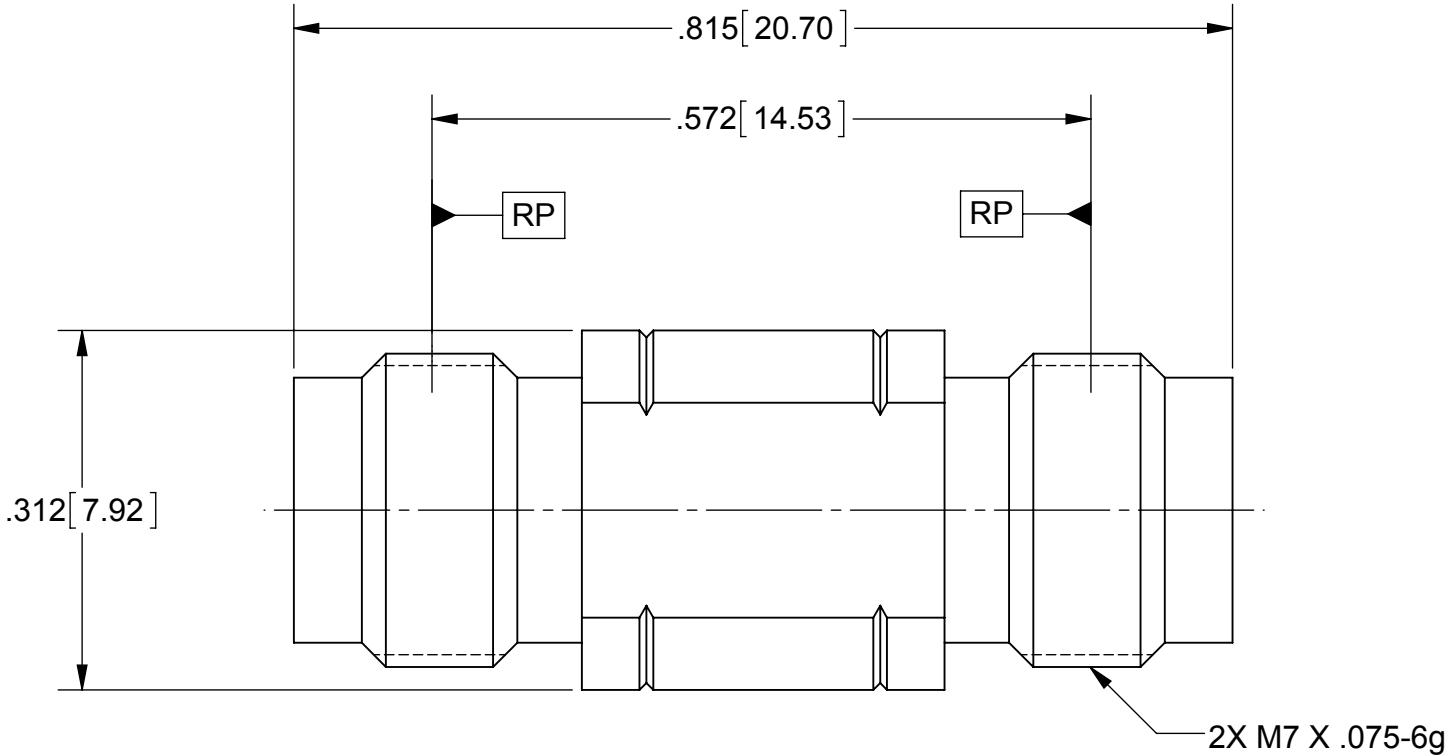


ROHS COMPLIANT

PRODUCT DATA DRAWING

REVISION HISTORY			
REV	DESCRIPTION	DATE	APPROVED
B	DCN 39785	05/13	STW



MATERIAL:

BODY & INSERT: STAINLESS STEEL PER AMS-5640,
ALLOY UNS S30300, TYPE 1

CONTACT: BERYLLIUM COPPER PER ASTM B196,
ALLOY No. UNS C17200, TD04

INSULATOR: POLYETHERIMIDE RESIN (ULTEM 1000)

FINISH:

BODY & INSERT: PASSIVATED PER AMS-2700.

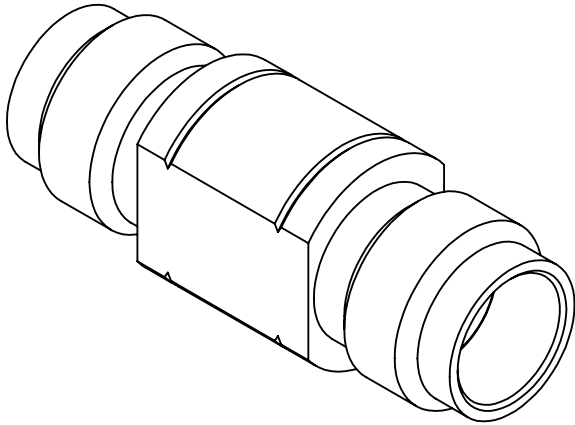
CONTACT: GOLD PER ASTM B488, TYPE II,
CODE C, CLASS 1.27, OVER NICKEL
PER AMS-QQ-N-290, CLASS 1, .00005" MIN.


PERFORMANCE:

IMPEDANCE: 50 OHMS
FREQ. RANGE: DC TO 50 GHz

VSWR: 1.11 MAX, DC TO 18 GHz
1.13 MAX, 18 TO 25.5 GHz
1.29 MAX, 25.5 TO 50 GHz

INSERTION LOSS: $.07 \times (f)^{1/2}$, f in GHz
 CONCENTRICITY OF CENTER CONDUCTOR SHALL BE WITHIN .003 T.I.R.
 RF LEAKAGE (dB min) = $-[90-f(\text{GHz})]$



MATERIAL:	SEE NOTES	DIMENSIONS ARE IN INCHES TOLERANCES:		UNLESS OTHERWISE SPECIFIED		SV Microwave, Inc. 2400 Centrepark West Drive, Suite 100 West Palm Beach, FL 33409	
FINISH:	SEE NOTES	FRACTIONAL: $\pm 1/64$ ANGULAR: $X^\circ \pm 1'0''$ $X^\circ X' \pm 15''$		1) ALL DIMENSIONS ARE IN INCHES (MILLIMETERS) 2) ALL DIMENSIONS ARE AFTER PLATING. 3) BREAK CORNERS & EDGES .005 R. MAX. 4) CHAM. 1ST & LAST THREADS. 5) SURFACE ROUGHNESS 63-MIL-STD-10. 6) DIA. 'S ON COMMON CENTERS TO BE CONCENTRIC WITHIN .003 T.I.R. 7) REMOVE ALL BURRS		TITLE: 2.4mm JACK TO JACK ADAPTER	
SURFACE AREA:	N/A	DECIMAL: .X $\pm .030$ $.XX \pm .010$ $.XXX \pm .005$					
	PROPRIETARY	INTERPRET DIMENSIONS AND TOLERANCES PER ASME Y14.5M - 1994					
THE INFORMATION CONTAINED IN THIS DRAWING IS THE SOLE PROPERTY OF SV MICROWAVE, INC. ANY REPRODUCTION IN PART OR AS A WHOLE WITHOUT THE WRITTEN PERMISSION OF SV MICROWAVE, INC IS PROHIBITED.		THIRD ANGLE PROJECTION		DRAWN: ELA 04/11/12		SIZE CAGE CODE DWG. NO. B 95077 SF1116-6037	
				CHECKED: STW 04/11/12		SCALE: 6:1	
				APPROVED: STW 04/11/12		SHEET 1 OF 1	