

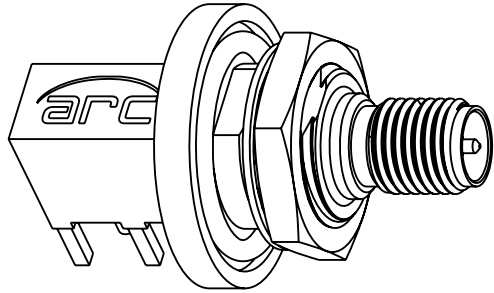
NOTES:

1. MATERIALS OF CONSTRUCTION:  
BODY: BRASS, GOLD PLATED  
CAP: BRASS, NICKEL PLATED  
MALE CONTACT: BRASS, GOLD PLATED  
INSULATORS: PTFE, NATURAL  
GASKET: SILICONE RUBBER
2. ELECTRICAL:  
A. IMPEDANCE: 50 OHM  
B. FREQUENCY RANGE: DC - 3 GHz
3. MECHANICAL:  
A. TEMPERATURE RANGE: -65° C TO +165° C  
B. SEALING REQUIREMENTS: WHEN MOUNTED ON PANEL MUST  
WITHSTAND WATER PRESSURE AT DEPTH OF 1 METER FOR 30 MIN.  
WITHOUT ANY SIGN OF LEAKAGE.  
C. DESIGN NOT SUITABLE FOR REFLOW.
4. PACKAGING:  
A. QUANTITY: SINGLE PACK  
B. MARKING: BAG TO BE MARKED  
"AMPHENOL, 901-10386, AND DATE CODE"

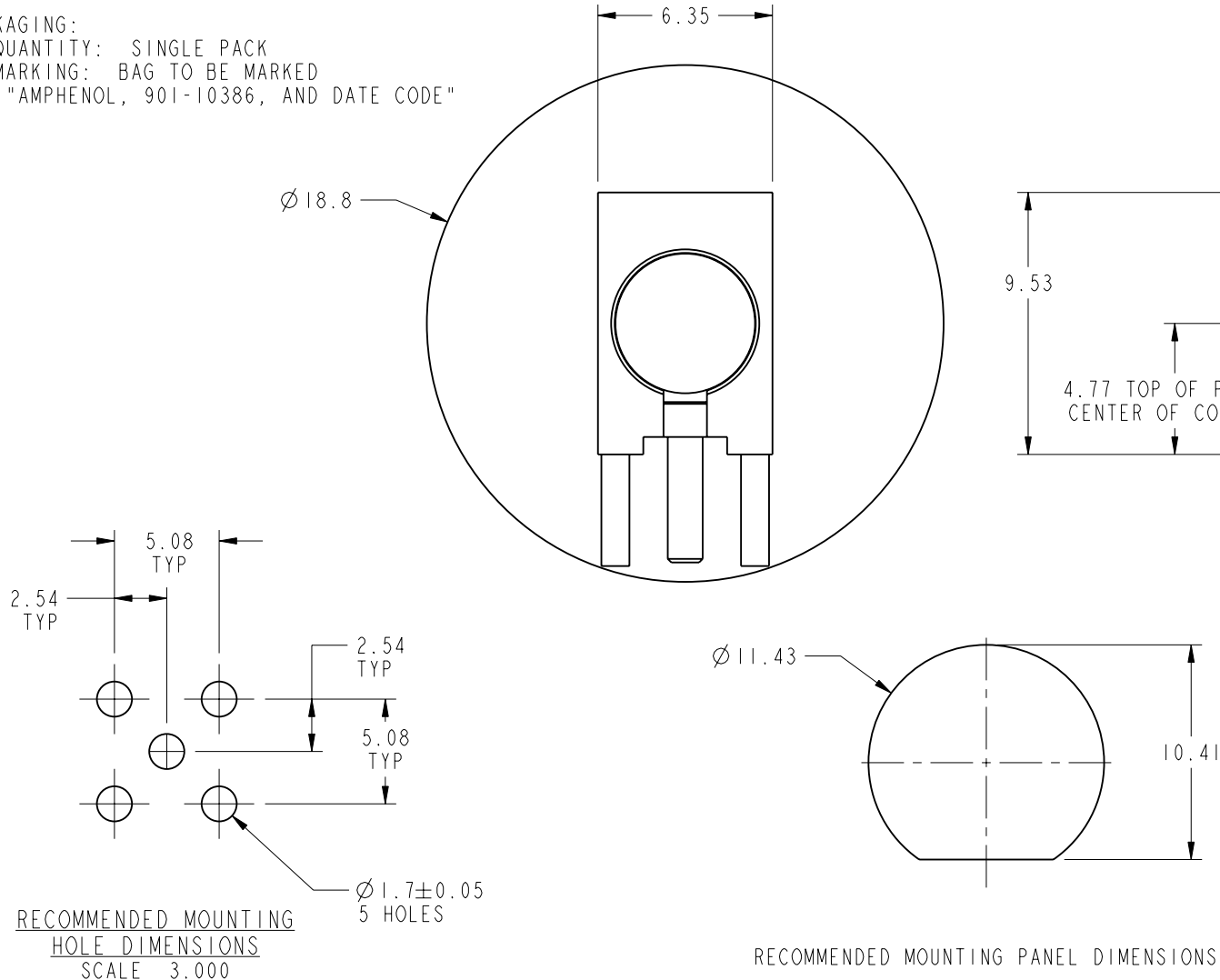
THIRD ANGLE PROJ. 

## REVISIONS

REV	DESCRIPTION	DATE	ECO	APPR
A	RELEASE TO MFG.	--	49217	JTS
B	ADD ARC LOGO TO BODY		49619	RLB



SCALE 2.000



SCALE 3.000

# CUSTOMER OUTLINE DRAWING

UNLESS OTHERWISE SPECIFIED, DIMENSIONS ARE IN METRIC AND TOLERANCES ARE: <0.5mm      0.5 - 6mm      6 - 30mm      30 - 120mm      ANGLES ± 0.05mm      ±0.1mm      ±0.2mm      ± 0.3mm      ±1°				MATERIAL - -	DRAWN T. SMITH	DATE 14-Jun-12	TITLE RP SMA JACK R/A BULKHEAD PC MOUNT		Amphenol RF Danbury CT USA, Tainan, Taiwan, Shenzhen, China www.amphenolrf.com	
NOTICE - These drawings, specifications, or other data (1) are, and remain the property of Amphenol corp. (2) must be returned upon request; and (3) are confidential and not to be disclosed to any person other than those to whom they are given by Amphenol Corp. the furnishing of these drawings, specifications, or other data by Amphenol Corp., or to any other person to anyone for any purpose is not to be regarded by implication or otherwise in any manner licensing, granting rights to permitting such holder or any other person to manufacture, use or sell any product, process or design, patented or otherwise, that may in any way be related to or disclosed by said drawings, specifications, or other data.				ENGINEER T. SMITH	DATE 14-Jun-12					
				REFERENCE EAR# 3608      AND	APPROVED S. HSIEH	DATE 06-Mar-14	SCALE: 6.0:1.0    SHEET    2 OF 2		DRAWING NO. 901-10386	
				CONFIGURATION LEVEL: <input type="checkbox"/> <input type="checkbox"/> <input type="checkbox"/>	CAD FILE	DWG SIZE B		REV B	ITEM NO.      901-10386	
				FINISH					PART NO.      901-10386	