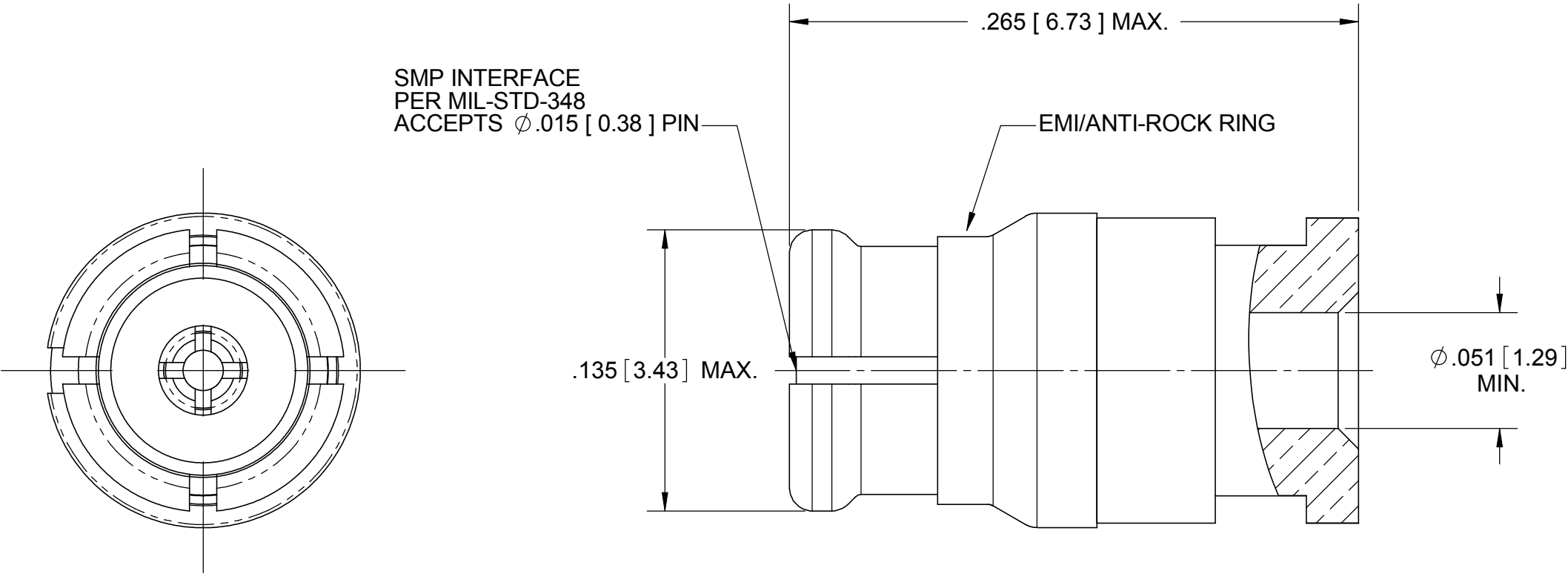


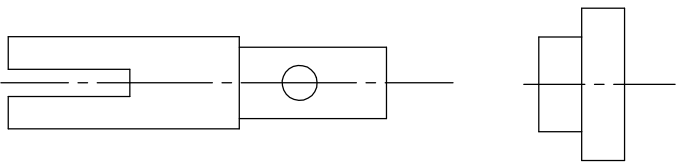
REVISION HISTORY			
REV	DESCRIPTION	DATE	APPROVED
-	REL. DCN 37138	10/29/09	STW



MATERIALS:
BODY, CONTACT,
EMI/
ANTI-ROCK RING: BERYLLIUM COPPER PER ASTM B196
INSULATOR: PTFE PER ASTM D1710
CABLE STOP: TORLON

FINISHES:
BODY, CONTACT,
EMI/
ANTI-ROCK RING: GOLD PER ASTM B488, TYPE II
GRADE C, CLASS 1.27, OVER NICKEL
PER ASM-QQ-N-290, CLASS 1

ELECTRICAL:
IMPEDANCE: 50 OHMS
FREQ. RANGE: DC TO 40 GHZ
D.W.V.: 500 VOLTS DC
INSULATION RES.: 5,000 MEGOHMS MINIMUM



CONTACT
SOLDER TO CABLE

CABLE STOP

MATERIAL:	SEE NOTES	DIMENSIONS ARE IN INCHES TOLERANCES: FRACTIONAL: ±1/64 ANGULAR: X° ±1°0'
-----------	-----------	---