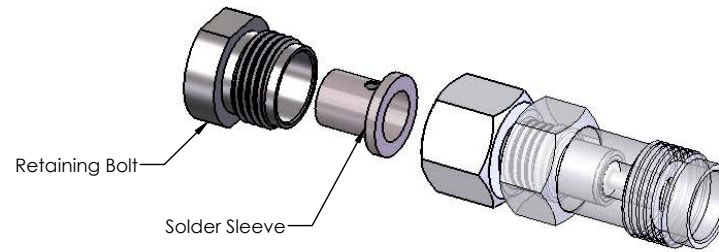
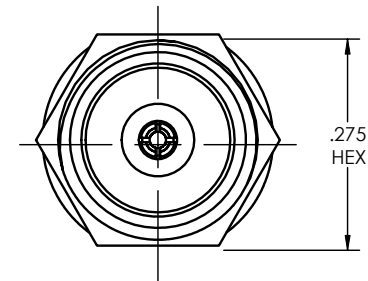
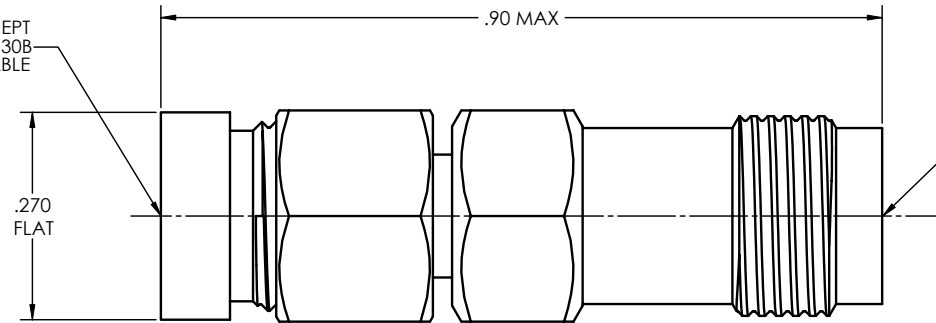


REVISIONS			
REV	DESCRIPTION	DATE	BY
-	INITIAL RELEASE	04.08.10	DKN



TO ACCEPT
TLL40-1130B
FLEX CABLE



Note(s):

1. Retaining Bolt & Solder Sleeve to be packed and shipped unassembled.

MATERIAL:	ELECTRICAL:	MECHANICAL:	ENVIRONMENTAL:
Body & Retaining Bolt: 303 SST per ASTM A-582 Center Conductor & Solder Sleeve: BeCu Alloy per ASTM B-196 Insulator: PTFE Teflon per ASTM D-1710	Impedance: 50 Ohms Nom. Freq. Range: DC TO 40 GHz VSWR: 1.08 + .005 X f (GHz) Insertion Loss: .03 x \sqrt{f} GHz Working Voltage: 165 Vrms @ Sea Level Dielectric Withstand Voltage: 500 Vrms RF HiPot Voltage: 250 Vrms Min @ 5MHz Corona Level: 125 Vrms @ 70,000 ft Insulation Resistance: 5,000 MegOhms Contact Resistance: Center Conductor: 2.0 Milliohms	Mating Characteristics: Interface per Mil-Std-348 Mating Torque: 8-10 lb.in Connector Durability: 500 Cycles	Temp. Range: -65°C to +165°C Thermal Shock: MIL-STD-202, Method 107, Test Cond. B Moisture Resistance: MIL-STD-202, Method 106. Insulation resistance at least 200 MegaOhms within 5 minutes after removal from humidity Corrosion: MIL-STD-202, Method 101, Test Cond. B Vibration: MIL-STD-202, Method 204, Test Cond. D Shock: MIL-STD-202, Method 213, Test Cond. I

FINISH:			APPLICABLE TENSOLITE DOCUMENTS			TOLERANCES AND NOTES EXCEPT AS NOTED			-		
Center Conductor & Solder Sleeve: Gold plate per ASTM B-488 over nickel underplate per AMS-QQ-N-290 Body & Retaining Bolt: Passivated per ASTM A-967 or AMS-QQ-P-35			WORK STANDARD	PROD INSTRU	ASSY INSTRU	DIMENSIONS ARE IN INCHES. LINEAR .XX ± .015 FRACTION ± 1/32			MATERIAL		
			NA	NA	NA	1. MACHINE FINISH \sqrt{RMS}			APPROVAL INITIALS	DATE	SIZE
						2. BREAK ALL SHARP EDGES .005 MAX.			DRAWN BY	10.11.07	8:1
						3. MACHINED FILLETS .005 MAX.			CHECKED BY		0L/
						4. MACHINED SURFACES SQUARE TO RESPECTIVE AXIS WITHIN .005 INCHES PER INCH.			TEST ENGR		
						5. MACHINED DIAMETERS CONCENTRIC WITHIN .002 TIR.			QUALITY		
						6. DIMENSIONS TO BE MET BEFORE PLATING.			DESIGN ENGR	H.N.	04.09.10
						7. CHAMFER ALL THREADS 45°.			MFG. ENGR		
						8. THREADS PER 1-26.					
						9. REMOVE FRAYED EDGES ON TEFLON.					
						10. REMOVE ALL BURRS.					
			NOTICE			THIS DRAWING EMBODIES A CONFIDENTIAL PROPRIETARY DESIGN ORIGINATED BY TENSOLITE COMPANY AND ALL DESIGN, MANUFACTURING, REPRODUCTION, USE AND SALE RIGHTS REGARDING THE SAME ARE EXPRESSLY RESERVED. IT IS SUBMITTED UNDER A CONFIDENTIAL RELATIONSHIP FOR A SPECIFIED PURPOSE, AND THE RECIPIENT AGREES BY ACCEPTING THIS DRAWING NOT TO SUPPLY OR DISCLOSE ANY INFORMATION REGARDING IT TO ANY UNAUTHORIZED PERSON TO INCORPORATE IN OTHER PROJECTS ANY SPECIAL FEATURES PECULIAR TO THIS DESIGN. ALL PATENT RIGHTS HERETO ARE EXPRESSLY RESERVED BY TENSOLITE COMPANY, LONG BEACH, CALIFORNIA 90815.			TITLE		
									2.4 mm FEMALE FOR TLL40-1130B		
									SCALE	SUB-DIRECTORY/FILE NAME	SHEET 1 OF 1
									C 30990	DRAWING NO.	5069-6CCSF
											REV. -