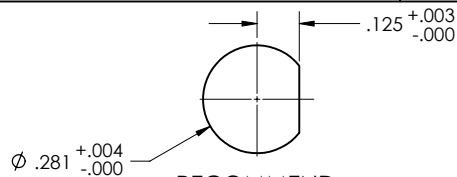


4

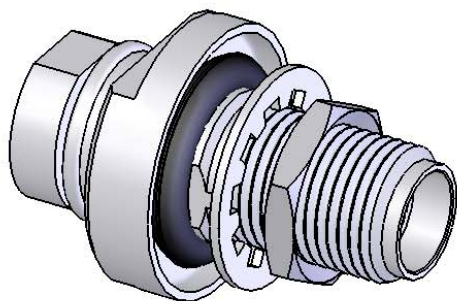
3

2

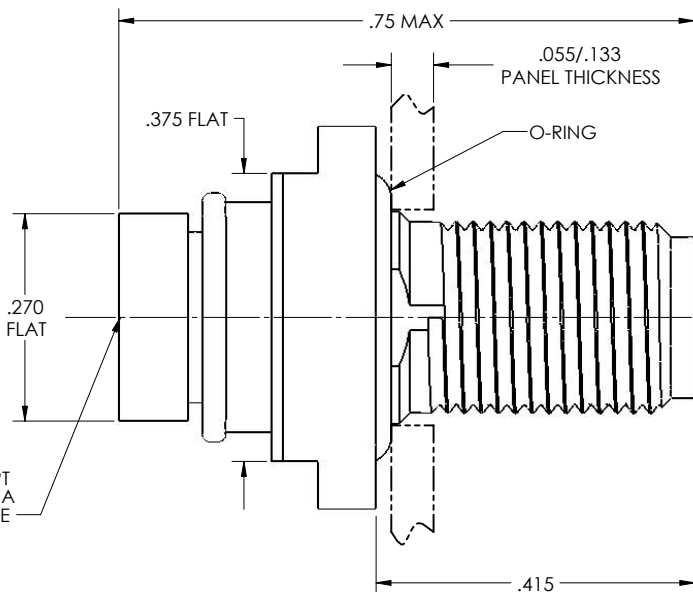
1



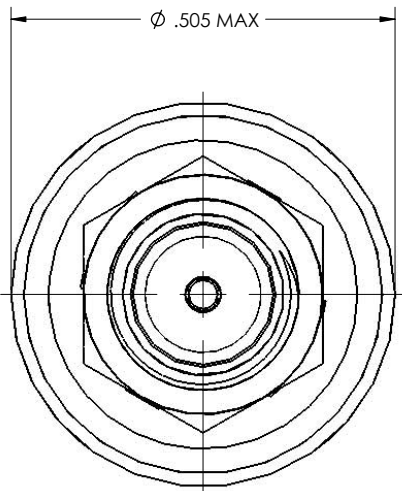
RECOMMEND
MOUNTING HOLE
SCALE 4: 1



REVISIONS			
REV	DESCRIPTION	DATE	BY
-	-	-	-



HIGH PERFORMANCE
SMA FEMALE



5/16 HEX NUT

LOCK WASHER

PRELIMINARY

MATERIAL:

BODY, RETAINING BOLT, LOCK NUT:
303 SST PER ASTM A-582
CENTER CONDUCTOR, SOLDER SLEEVE:
BeCu ALLOY PER ASTM B-196
INSULATOR:
TEFLON PER ASTM D-1710
O-RING: SILICONE RUBBER
LOCK WASHER: 410 SST

ELECTRICAL:

Impedance: 50 Ohms Nom.
Freq. Range: DC TO 26 GHz
VSWR: 1.25 Max
Insertion Loss: .20 db
Working Voltage: 500 Vrms @ Sea Level
Dielectric Withstand Voltage: 1500 Vrms
RF HiPot Voltage: 1000 Vrms Min @ 5MHz
Corona Level: 375 Vrms @ 70,000 ft
Insulation Resistance: 5000 Mohms
Contact Resistance:
Center Conductor: 2.0 Milliohms

MECHANICAL:

Force To Engage & Disengage:
Torque: 2 inch-pounds max
Longitudinal Force: NA
Connector Durability:
500 cycles min @ 12 cycles/minute max
Center Contact Retention: 6 lbs min. axial
Permeability: Less than 2.0 mU

ENVIRONMENTAL:

Temp. Range: -65°C to +165°C
Thermal Shock:
MIL-STD-202, Method 107, Test Cond. B
Moisture Resistance:
MIL-STD-202, Method 106. Insulation resistance
at least 200 MegaOhms within 5 minutes after
removal from humidity
Corrosion:
MIL-STD-202, Method 101, Test Cond. B
Vibration:
MIL-STD-202, Method 204, Test Cond. D
Shock:
MIL-STD-202, Method 213, Test Cond. I

FINISH:

SOLDER SLEEVE, CENTER CONDUCTOR:
GOLD PLATE PER ASTM B-488 OVER NICKEL PLATE PER AMS-QQ-N-290
BODY, RETAINING BOLT, HEX NUT, LOCK WASHER:
PASSIVATED PER ASTM A-967 OR AMS-QQ-P-35

APPLICABLE TENSOLITE DOCUMENTS

WORK STANDARD	PROD INSTRU	ASSY INSTRU
NA	NA	NA

NOTICE

THIS DRAWING EMBODIES A CONFIDENTIAL PROPRIETARY DESIGN ORIGINATED BY TENSOLITE COMPANY AND ALL DESIGN, MANUFACTURING, REPRODUCTION, USE AND SALE RIGHTS REGARDING THE SAME ARE EXPRESSLY RESERVED. IT IS SUBMITTED UNDER A CONFIDENTIAL RELATIONSHIP FOR A SPECIFIED PURPOSE AND THE RECIPIENT AGREES BY ACCEPTING THIS DRAWING NOT TO DISSEMINATE, REPRODUCE, OR DISCLOSE ANY INFORMATION REGARDING IT TO ANY UNAUTHORIZED PERSON OR TO INCORPORATE IN OTHER PROJECTS ANY SPECIAL FEATURES PECULIAR TO THIS DESIGN. ALL PATENT RIGHTS HERETO ARE EXPRESSLY RESERVED BY TENSOLITE COMPANY, LONG BEACH, CALIFORNIA 90815.

TOLERANCES AND NOTES
EXCEPT AS NOTED

DIMENSIONS ARE IN INCHES.
LINEAR .XX ± .015
FRACTION ± 1/32
1. MACHINE FINISH: \sqrt{RMS}
2. BREAK ALL SHARP EDGES .005 MAX.

3. MACHINED FILLETS .005 MAX.
4. MACHINED SURFACES SQUARE TO RESPECTIVE AXIS WITHIN .005 INCHES PER INCH.
5. MACHINED DIAMETERS CONCENTRIC WITHIN .002 I.R.
6. DIMENSIONS TO BE MET BEFORE PLATING.
7. CHAMFER ALL THREADS 45°.
8. THREADS PER 1-26.
9. REMOVE FRAYED EDGES ON TEFLON.
10. REMOVE ALL BURRS.

MATERIAL		SIZE	SPECIFICATION	PROCUREMENT
APPROVAL INITIALS	DATE	Tensolite 2400 Grand Avenue Long Beach, California 90815-1762		
DRAWN BY	YPHAN			
TEST ENGR	10.26.07	TITLE HIGH PERFORMANCE SMA FEMALE BULKHEAD FEED THROUGH FOR TLL40-1111A FLEX CABLE		
CHECKED BY				
QUALITY		SCALE 8:1		
DESIGN ENGR	T.EN			
DATE	11.01.07	SUB-DIRECTORY/FILE NAME SHEET 1 OF 1		
MFG. ENGR				
		SIZE	CAGE CODE	DRAWING NO.
			30990	5754-4CCSF

ENG-DWG REV. A

4

3

2

1