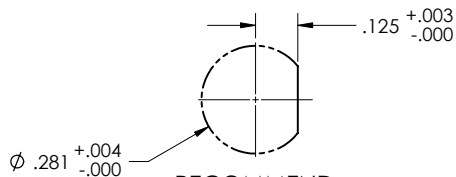


4

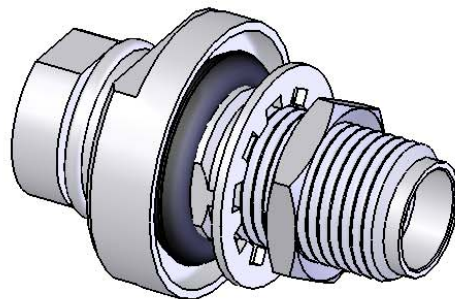
3

2

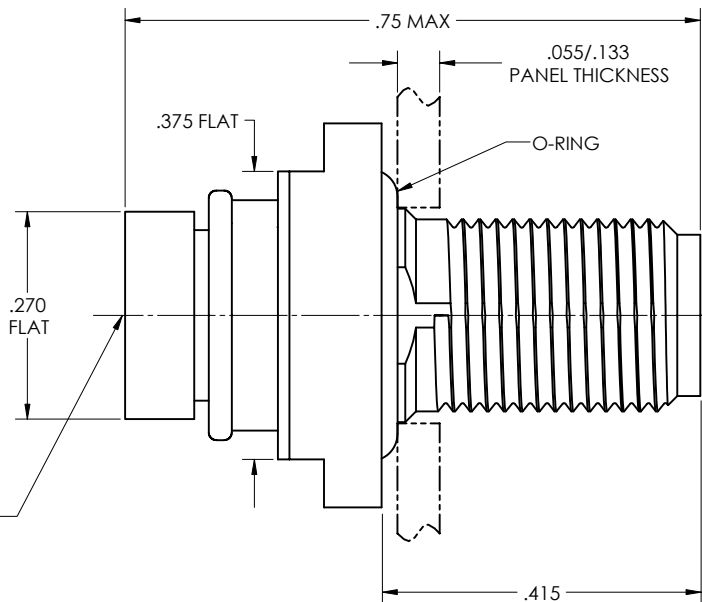
1



RECOMMEND  
MOUNTING HOLE  
SCALE 4: 1



REVISIONS			
REV	DESCRIPTION	DATE	BY
-	-	-	-

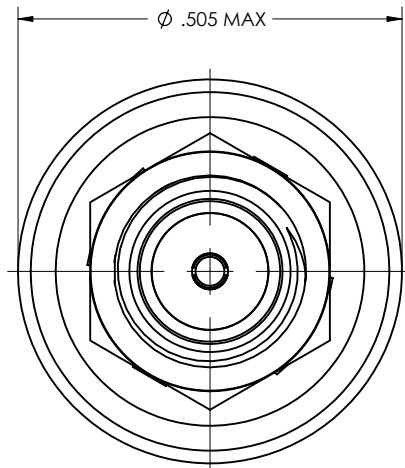


TO ACCEPT  
TLL40-1130A  
FLEX CABLE

HIGH PERFORMANCE  
SMA FEMALE

5/16 HEX NUT

LOCK WASHER



# PRELIMINARY

MATERIAL:

BODY, RETAINING BOLT, LOCK NUT:  
303 SST PER ASTM A-582  
CENTER CONDUCTOR, SOLDER SLEEVE:  
BeCu ALLOY PER ASTM B-196  
INSULATOR:  
TEFLON PER ASTM D-1710  
O-RING: SILICONE RUBBER  
LOCK WASHER: 410 SST

ELECTRICAL:

Impedance: 50 Ohms Nom.  
Freq. Range: DC TO 26 GHz  
VSWR: 1.25 Max  
Insertion Loss: .20 db  
Working Voltage: 500 Vrms @ Sea Level  
Dielectric Withstand Voltage: 1500 Vrms  
RF HiPot Voltage: 1000 Vrms Min @ 5MHz  
Corona Level: 375 Vrms @ 70,000 ft  
Insulation Resistance: 5000 Mohms  
Contact Resistance:  
Center Conductor: 2.0 Milliohms

MECHANICAL:

Force To Engage & Disengage:  
Torque: 2 inch-pounds max  
Longitudinal Force: NA  
Connector Durability:  
500 cycles min @ 12 cycles/minute max  
Center Contact Retention: 6 lbs min. axial  
Permeability: Less than 2.0 mU

ENVIRONMENTAL:

Temp. Range: -65°C to +165°C  
Thermal Shock:  
MIL-STD-202, Method 107, Test Cond. B  
Moisture Resistance:  
MIL-STD-202, Method 106. Insulation resistance  
at least 200 MegaOhms within 5 minutes after  
removal from humidity  
Corrosion:  
MIL-STD-202, Method 101, Test Cond. B  
Vibration:  
MIL-STD-202, Method 204, Test Cond. D  
Shock:  
MIL-STD-202, Method 213, Test Cond. I

FINISH:

SOLDER SLEEVE, CENTER CONDUCTOR:  
GOLD PLATE PER ASTM B-488 OVER NICKEL PLATE PER AMS-QQ-N-290  
BODY, RETAINING BOLT, HEX NUT, LOCK WASHER:  
PASSIVATED PER ASTM A-967 OR AMS-QQ-P-35

APPLICABLE TENSOLITE DOCUMENTS

WORK STANDARD	PROD INSTRUC	ASSY INSTRUC
NA	NA	NA

NOTICE

THIS DRAWING EMBODIES A CONFIDENTIAL PROPRIETARY DESIGN ORIGINATED BY TENSOLITE COMPANY AND ALL DESIGN, MANUFACTURING, REPRODUCTION, USE AND SALE RIGHTS REGARDING THE SAME ARE EXPRESSLY RESERVED. IT IS SUBMITTED UNDER A CONFIDENTIAL RELATIONSHIP FOR A SPECIFIED PURPOSE AND THE RECIPIENT AGREES BY ACCEPTING THIS DRAWING NOT TO DISCLOSE ANY INFORMATION REGARDING IT TO ANY UNAUTHORIZED PERSON OR TO INCORPORATE IN OTHER PROJECTS ANY SPECIAL FEATURES SPECIFIC TO THIS DESIGN. ALL PATENT RIGHTS HERETO ARE EXPRESSLY RESERVED BY TENSOLITE COMPANY, LONG BEACH, CALIFORNIA 90815.

TOLERANCES AND NOTES  
EXCEPT AS NOTED

DIMENSIONS ARE IN INCHES.  
LINEAR .XX ±.015  
FRACTION ± 1/32

- MACHINE FINISH:  $\sqrt{R}$  RMS
- BREAK ALL SHARP EDGES .005 MAX.
- MACHINED FILLETS .005 MAX.
- MACHINED SURFACES SQUARE TO RESPECTIVE AXES WITHIN .005 INCHES PER INCH.
- MACHINED DIAMETERS CONCENTRIC WITHIN .002 TIR.
- DIMENSIONS TO BE MET BEFORE PLATING.
- CHAMFER ALL THREADS 45°.
- THREADS PER 11-26.
- REMOVE FRAINED EDGES ON TEFLON.
- REMOVE ALL BURRS.

-		-		-		-	
MATERIAL		SIZE		SPECIFICATION		PROCUREMENT	
APPROVAL INITIALS	DATE	<b>Tensolite</b> 2400 Grand Avenue Long Beach, California 90815-1762		<b>HIGH PERFORMANCE CABLES &amp; INTERCONNECT SYSTEMS</b>		SHEET 1 OF 1	
DRAWN BY	YFPHAN						
CHECKED BY	10.29.07						
TEST ENGR							
QUALITY		TITLE		HIGH PERFORMANCE SMA FEMALE BULKHEAD FEED THROUGH FOR TLL40-1130A FLEX CABLE		REV.	
DESIGN ENGR	T.F.N	SCALE		8:1		DRAWING NO.	
MFG. ENGR	11.01.07	CAGE CODE		0L/		5754-5CCSF	
		SIZE		C 30990			

ENG-DWG REV. A

4

3

2

1