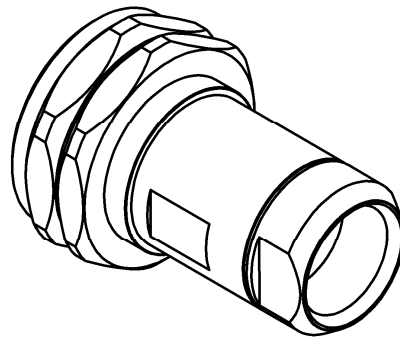
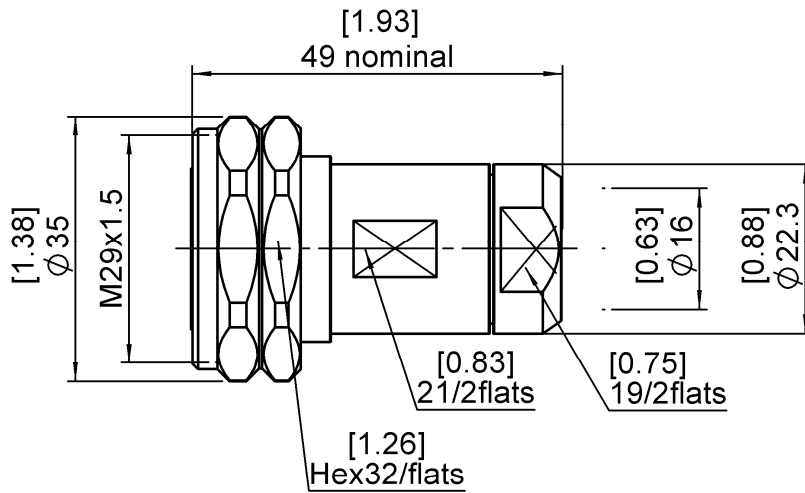


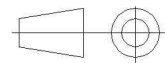
**STRAIGHT PLUG EZ FIT TYPE**  
**CABLE 1/2" SUPERFLEXIBLE CORRUGATED**

**R185A.031.200**

Series : ECO 7/16



All dimensions are in mm.



COMPONENTS	MATERIALS	PLATING (µm)
BODY	BRASS	BBR
CENTER CONTACT	BRONZE	SILVER
OUTER CONTACT		
INSULATOR	PTFE	
GASKET	SILICONE RUBBER	
OTHERS PARTS	BRASS	BBR
-	-	-
-	-	-

Issue : 0943 B

In the effort to improve our products, we reserve the right to make changes judged to be necessary.

**RADIAL** 

**STRAIGHT PLUG EZ FIT TYPE**  
**CABLE 1/2" SUPERFLEXIBLE CORRUGATED**

**R185A.031.200**

Series : ECO 7/16

**PACKAGING**

Standard	Unit	Other
<b>20</b>	<b>'W' option</b>	<b>Contact us</b>

**ELECTRICAL CHARACTERISTICS**

Impedance	<b>50</b>	$\Omega$
Frequency	<b>0-3</b>	GHz
VSWR	<b>1.10 + 0.0000</b>	x F(GHz) Maxi
Insertion loss	<b>0.05</b>	$\sqrt{F}(\text{GHz})$ dB Maxi
RF leakage	- ( <b>NA</b> )	- F(GHz)) dB Maxi
Voltage rating	<b>1270</b>	Veff Maxi
Dielectric withstanding voltage	<b>2000</b>	Veff mini
Insulation resistance	<b>10000</b>	M $\Omega$ mini

**MECHANICAL CHARACTERISTICS**

Center contact retention		
Axial force – Mating end	<b>200</b>	N mini
Axial force – Opposite end	<b>50</b>	N mini
Torque	<b>NA</b>	N.cm mini
Recommended torque		
Mating	<b>3500</b>	N.cm
Panel nut	<b>NA</b>	N.cm
Clamp nut	<b>950</b>	N.cm
A/F clamp nut	<b>19.000</b>	mm
Mating life	<b>100</b>	Cycles mini
Weight	<b>100.0000</b>	g

**ENVIRONMENTAL**

Operating temperature	<b>-40/+85</b>	° C
Hermetic seal	<b>NA</b>	Atm.cm3/s
Panel leakage	<b>NA</b>	

**SPECIFICATION****CABLE ASSEMBLY**

Stripping	a	b	c	d	e	f
mm	8.00	19.0	29.0	0.00	2.00	0.00

Assembly instruction :

Recommended cable(s)

FSJ4RN-50B  
M2839Z  
M2830Z

Characteristics indicated on this data sheet are those that can be achieved with the highest performance cable. Intrinsic limitations of the cable may diminish the performance of the assembly

Cable retention

- pull off	<b>350</b>	N mini
- torque	<b>NA</b>	N.cm

**TOOLING**

Part Number	Description	Hexagon
.	.	.
R282.010.050	STRIPPING TOOL	
R282.303.220	TORQUE SPANNER .708 in 84.075 in.lb	

**OTHER CHARACTERISTICS**

Watertightness:IP67

**Issue : 0943 B**

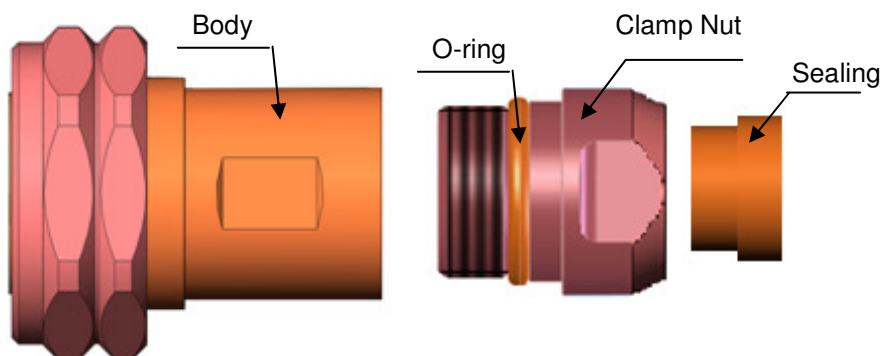
In the effort to improve our products, we reserve the right to make changes judged to be necessary.

**RADIAL** 

**STRAIGHT PLUG EZ FIT TYPE**  
**CABLE 1/2" SUPERFLEXIBLE CORRUGATED**

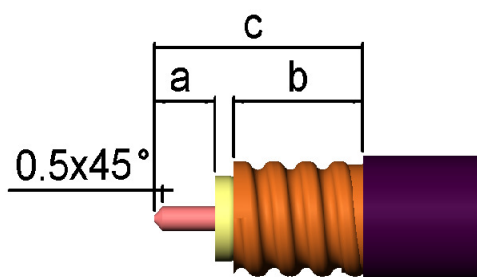
**R185A.031.200**

Series : ECO 7/16



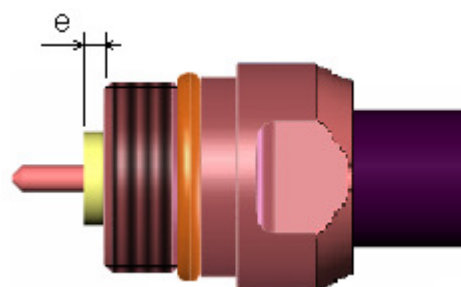
**1**

- Strip the cable.
- Do not damage the outer conductor .
- The end surface of inner conductor should be chamfered.
- Remove impurities such as copper scrap and burr on the end surface of the cable.



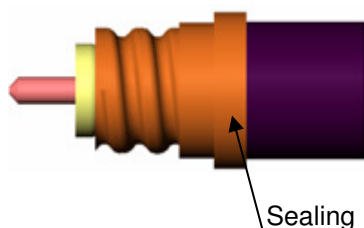
**3**

- Put the O-ring onto the clamp nut.
- Screw the clamp nut along the outer conductor of the cable, make sure dimension e is ok after tightening.



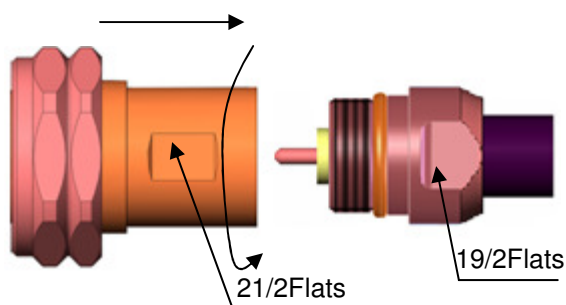
**2**

- Screw the sealing part along the outer conductor of the cable until stop.



**4**

- Screw the body onto the cable assembly.
- Recommended coupling torque : 950N.cm



**Issue : 0943 B**

In the effort to improve our products, we reserve the right to make changes judged to be necessary.

**RADIAL** 