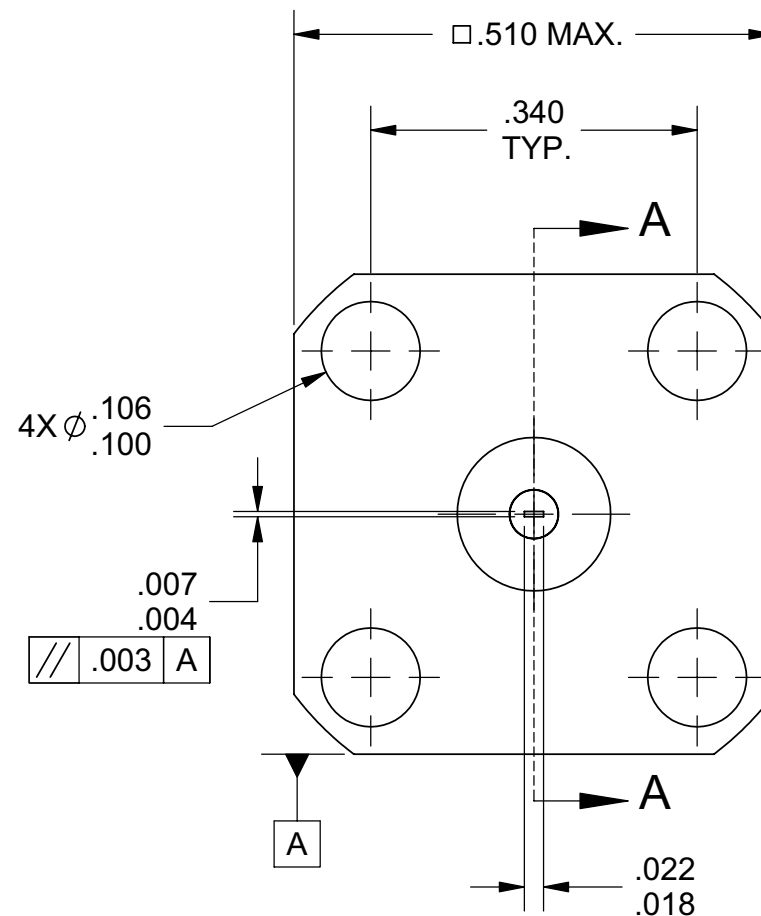
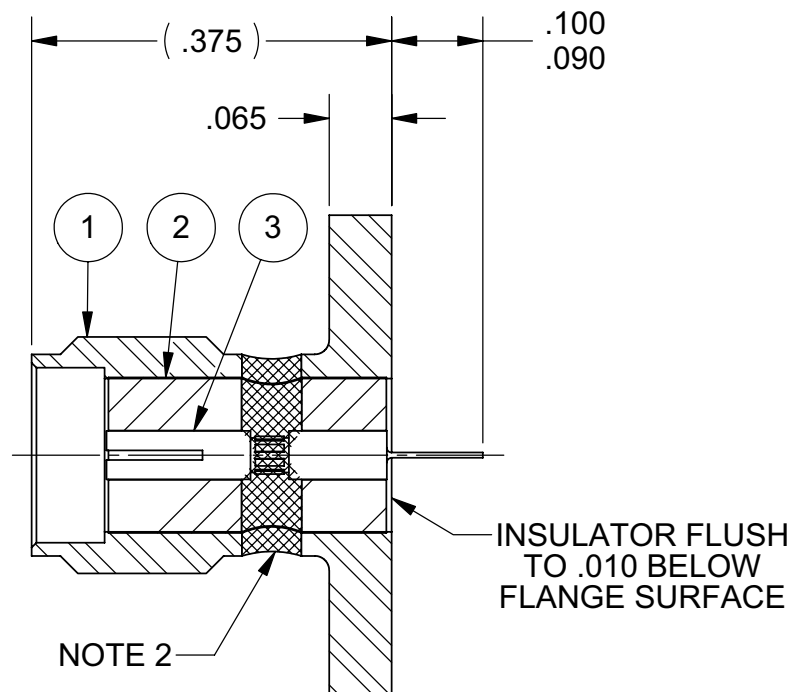


REVISION HISTORY			
REV	DESCRIPTION	DATE	APPROVED
A	REV. DCN 32325	11/04	BRT



NOTES:

- 1.) MATING END DIMENSIONS PER MD-107.
- 2.) DRILL ϕ .059 THRU INSULATOR. INSTALL CONTACT AND FILL WITH EPOXY PER 400-05-000.
- 3.) PROTECT TAB WHEN PACKAGING.

MATERIAL: PER BOM	DIMENSIONS ARE IN INCHES TOLERANCES: FRACTIONAL: $\pm 1/64$ ANGULAR: X° $\pm 1^{\circ}0'$ $X^{\circ}X'$ $\pm 15'$	UNLESS OTHERWISE SPECIFIED 1) ALL DIMENSIONS ARE AFTER PLATING. 2) BREAK CORNERS & EDGES .005 R. MAX. 3) CHAM. 1ST & LAST THREADS. 4) SURFACE ROUGHNESS 63 \sqrt MIL-STD-10. 5) DIA.'S ON COMMON CENTERS TO BE CONCENTRIC WITHIN .005 T.I.R. 6) REMOVE ALL BURRS	SV Microwave, Inc. 2400 Centrepark West Drive, Suite 100 West Palm Beach, FL 33409	
			TITLE: SMA JACK 4 HOLE FLANGE MOUNT W/TAB	
FINISH: PER BOM	DECIMAL: X \pm .030 .XX \pm .010 .XXX \pm .005	DRAWN: JRG 02/04/93	SIZE A	CAGE CODE 95077
PROPRIETARY THE INFORMATION CONTAINED IN THIS DRAWING IS THE SOLE PROPERTY OF SV MICROWAVE, INC. ANY REPRODUCTION IN PART OR AS A WHOLE WITHOUT THE WRITTEN PERMISSION OF SV MICROWAVE, INC IS PROHIBITED.	INTERPRET DIMENSIONS AND TOLERANCES PER ASME Y14.5M - 1994	CHECKED: DWC 03/09/93	DWG. NO. M83517/1-31003	
	THIRD ANGLE PROJECTION 	APPROVED: DWC 03/09/93	SCALE: 5:1	
		E.M. SIMULATION: N/A	SHEET 1 OF 2	