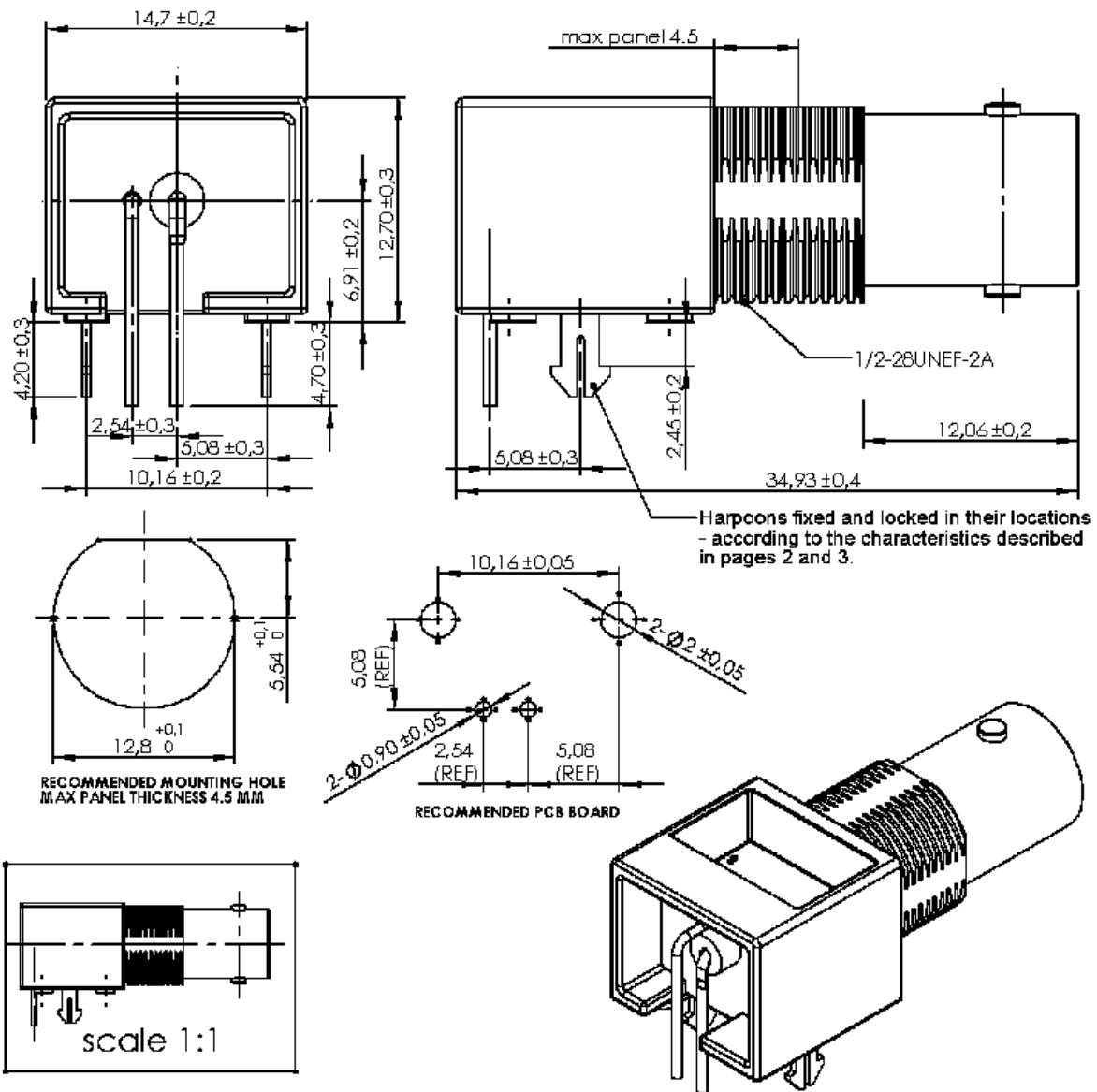


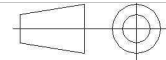
RIGHT ANGLE RECEPTACLE FOR PCB
WITH HARPOON LEGS

R142.676.430

Series : BNC 75



All dimensions are in mm.



| COMPONENTS | MATERIALS | PLATING (µm) |
|----------------|-----------|------------------|
| BODY | ZAMAK | NICKEL . |
| CENTER CONTACT | BRONZE | GOLD OVER NICKEL |
| OUTER CONTACT | | |
| INSULATOR | PTFE | |
| GASKET | | |
| OTHERS PARTS | BRONZE | TIN NICKEL |
| - | - | - |
| - | - | - |

Issue : 1047 C

In the effort to improve our products, we reserve the right to make changes judged to be necessary.

RADIAL

RIGHT ANGLE RECEPTACLE FOR PCB

WITH HARPOON LEGS

R142.676.430Series : **BNC 75****PACKAGING**

| Standard | Unit | Other |
|------------|-------------------|-------------------|
| 540 | 'W' option | Contact us |

SPECIFICATION**ELECTRICAL CHARACTERISTICS**

| | | |
|---------------------------------|---------------------|--------------------------------|
| Impedance | 75 | Ω |
| Frequency | 1 | GHz |
| VSWR | 1.3 + 0,0000 | x F(GHz) Maxi |
| Insertion loss | 0.2 | $\sqrt{F}(\text{GHz})$ dB Maxi |
| RF leakage | - (NA) | - F(GHz)) dB Maxi |
| Voltage rating | 500 | Veff Maxi |
| Dielectric withstanding voltage | 1500 | Veff mini |
| Insulation resistance | 5000 | M Ω mini |

ENVIRONMENTAL

| | | |
|-----------------------|-----------------|--------------------|
| Operating temperature | -65/+165 | $^{\circ}\text{C}$ |
| Hermetic seal | NA | Atm.cm3/s |
| Panel leakage | NA | |

OTHER CHARACTERISTICS

Assembly instruction

Others :

F1 : Withdrawal Force/2 harpoons pegs (retention force for between connector and PCB before soldering) : 20N/2 harpoons pegs min.

F2 : Push Force/2 harpoons pegs (before soldering) : 75N/2 harpoons pegs min.

F3 : Pull of force harpoon peg from connector body :
(**before and after soldering**)
80N/harpoon peg min.
Retention force body/2 harpoons pegs = 160N min.

MECHANICAL CHARACTERISTICS

| | |
|----------------------------|----------------------|
| Center contact retention | |
| Axial force – Mating end | 27 N mini |
| Axial force – Opposite end | 27 N mini |
| Torque | 2.8 N.cm mini |

| | |
|--------------------|----------------|
| Recommended torque | |
| Mating | NA N.cm |
| Panel nut | NA N.cm |

| | |
|-------------|------------------------|
| Mating life | 500 Cycles mini |
| Weight | 18,6780 g |

Issue : 1047 C

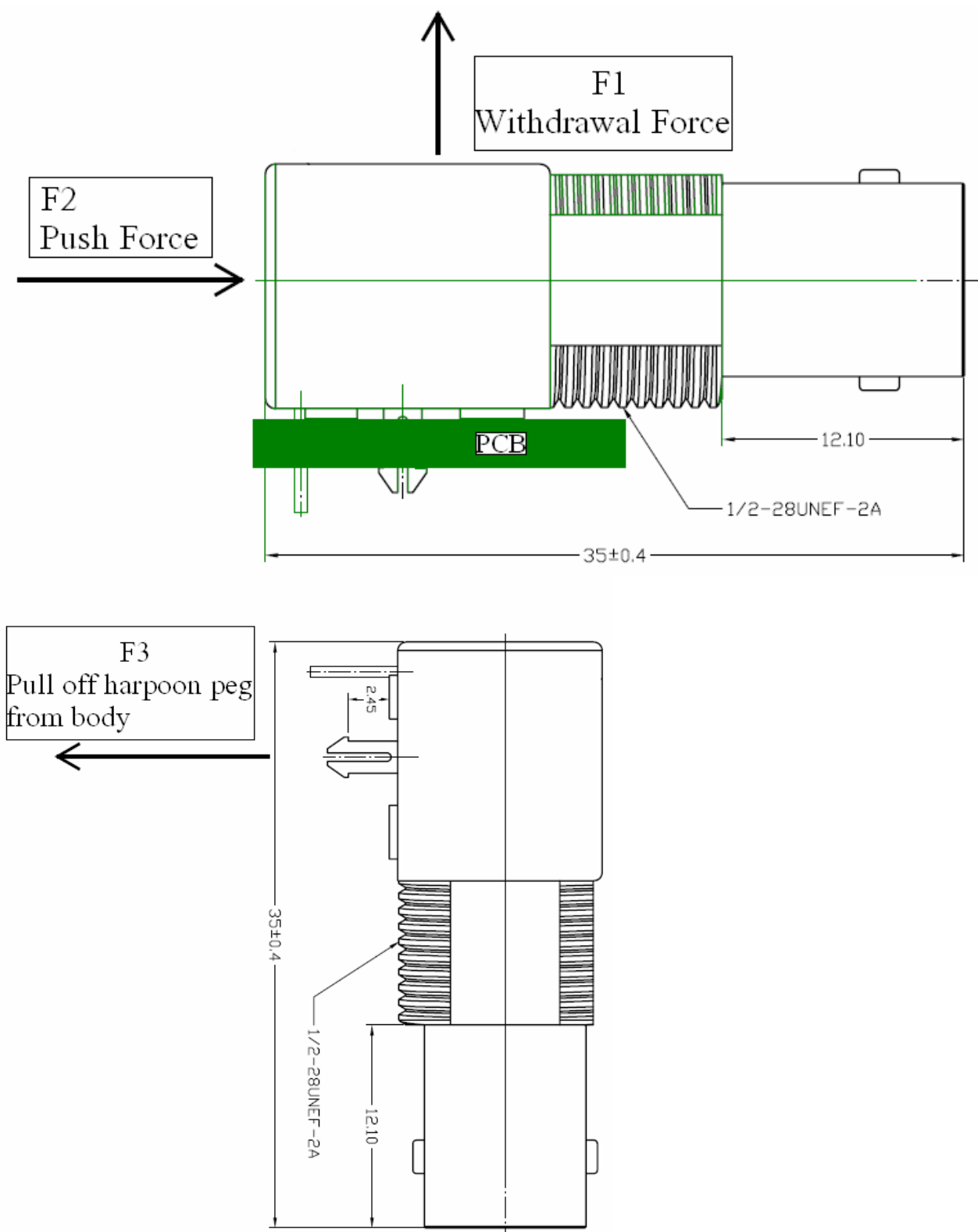
In the effort to improve our products, we reserve the right to make changes judged to be necessary.


RADIAL

**RIGHT ANGLE RECEPTACLE FOR PCB
WITH HARPOON LEGS**

R142.676.430

Series : **BNC 75**



Issue : 1047 C

In the effort to improve our products, we reserve the right to make changes judged to be necessary.

RADIAL 