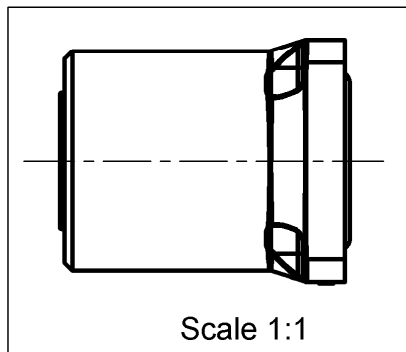
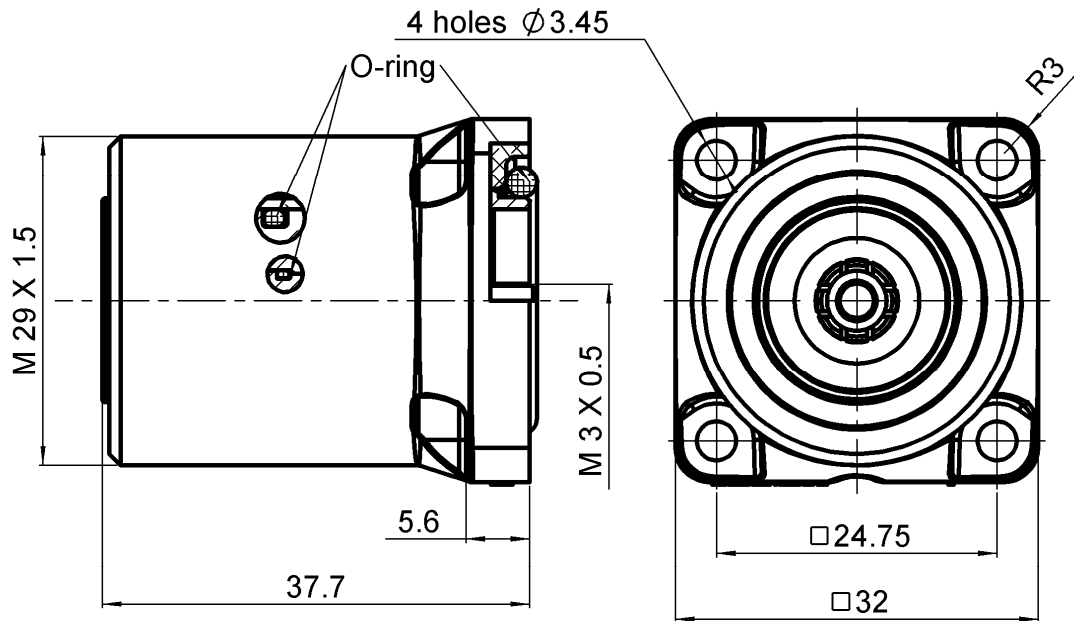


**COMPOSITE SQUARE FLANGE JACK RECEPTACLE-  
PANEL SEAL**

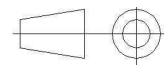
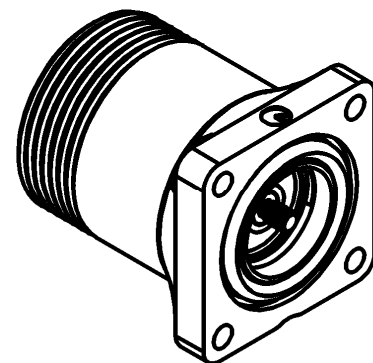
**R187.413.100**

**WATERPROOF INTERFACE-FRONT MOUNTING M3 S**

Series : 7/16  
**COMPOSITE**



PANEL CUT OUT		
A DIA		
B DIA		
4 holes		
	mm	
	Maxi	mini
A	16.2	16
B	3.7	3.6
C	24.8	24.7



All dimensions are in mm.

COMPONENTS	MATERIALS	PLATING (µm)
BODY	COMPOSITE MATERIAL - BLACK	-
CENTER CONTACT	BRONZE	SILVER 5 OVER COPPER 0.5
OUTER CONTACT	BRASS	BBR 0.5 OVER SILVER 3
INSULATOR	PTFE	-
GASKET	SILICONE RUBBER	-
OTHERS PARTS	-	-
-	-	-
-	-	-

Issue : 0909 B

In the effort to improve our products, we reserve the right to make changes judged to be necessary.

**RADIAL** 

**COMPOSITE SQUARE FLANGE JACK RECEPTACLE-  
PANEL SEAL****R187.413.100****WATERPROOF INTERFACE-FRONT MOUNTING M3 S**Series : 7/16  
**COMPOSITE****PACKAGING**

Standard	Unit	Other
<b>10</b>	<b>'W' option</b>	<b>Contact us</b>

**SPECIFICATION****ELECTRICAL CHARACTERISTICS**

Impedance	<b>50</b>	$\Omega$
Frequency	<b>0-7.5</b>	GHz
VSWR	<b>*1.06 + 0,0000</b>	x F(GHz) Maxi
Insertion loss	<b>0.05</b>	$\sqrt{F}(\text{GHz})$ dB Maxi
RF leakage	<b>- ( NA</b>	- F(GHz)) dB Maxi
Voltage rating	<b>1400</b>	Veff Maxi
Dielectric withstanding voltage	<b>2700</b>	Veff mini
Insulation resistance	<b>10000</b>	M $\Omega$ mini

**ENVIRONMENTAL**

Operating temperature	<b>-40/+85</b>	$^{\circ}\text{C}$
Hermetic seal	<b>NA</b>	Atm.cm3/s
Panel leakage	<b>IP67</b>	

**OTHER CHARACTERISTICS**

Assembly instruction

Others :

\*VSWR : 1.06 between DC to 3 GHz

\*VSWR : 1.1 between 3 to 7.5 GHz

PIM3:-125dBm under 2 carriers of +43dBm

**MECHANICAL CHARACTERISTICS**

Center contact retention	
Axial force – Mating end	<b>200</b> N mini
Axial force – Opposite end	<b>NA</b> N mini
Torque	<b>NA</b> N.cm mini

Recommended torque

Mating	N.cm
Panel nut	N.cm

Mating life **500** Cycles miniWeight **44,9500** g

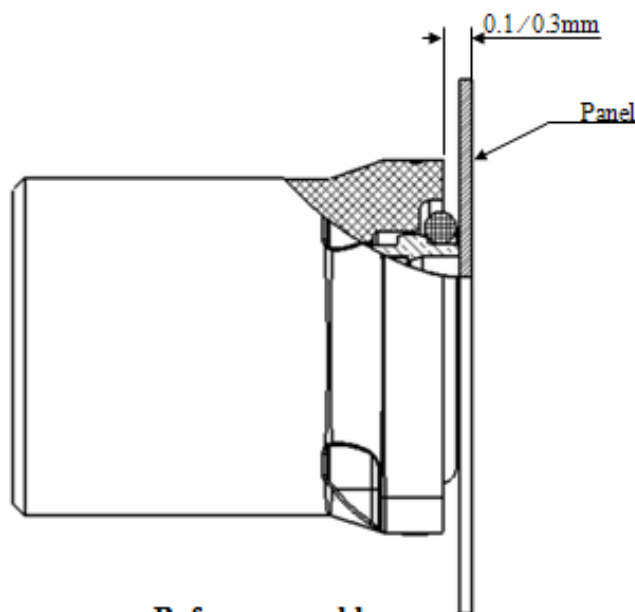
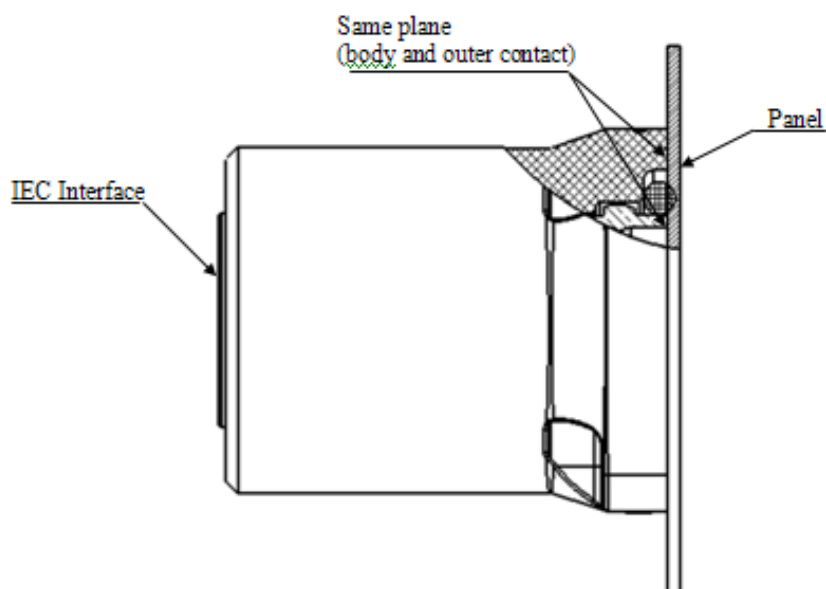
Issue : 0909 B

In the effort to improve our products, we reserve the right to make changes judged to be necessary.

**RADIAL** 

**COMPOSITE SQUARE FLANGE JACK RECEPTACLE-  
PANEL SEAL****R187.413.100****WATERPROOF INTERFACE-FRONT MOUNTING M3 S**Series : 7/16  
**COMPOSITE****Assembly instruction**

Prior to the installation, the outer contact is slightly protruded from the rear flange (0.1/0.3mm). During the installation, the outer contact is pushed inside the composite housing. In its final position, the outer contact is aligned with the rear flange, and in contact with the panel. During mating, the outer contact is pressed against the panel, reducing significantly the IM3 generation.

**Before assembly****After assembly****Issue : 0909 B**

In the effort to improve our products, we reserve the right to make changes judged to be necessary.

**RADIAL** 