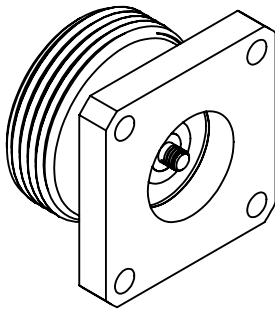


This document, including the design, configuration and mechanical features revealed herein are the sole, confidential and proprietary property of TRU Corporation. Reproduction or use thereof, in whole or part, is prohibited without the prior written consent of TRU Corporation.

REV.	DESCRIPTION	DATE	APPROVED
-	ORIGINAL ISSUE	09/01/11	AM



ENGINEERING DATA:

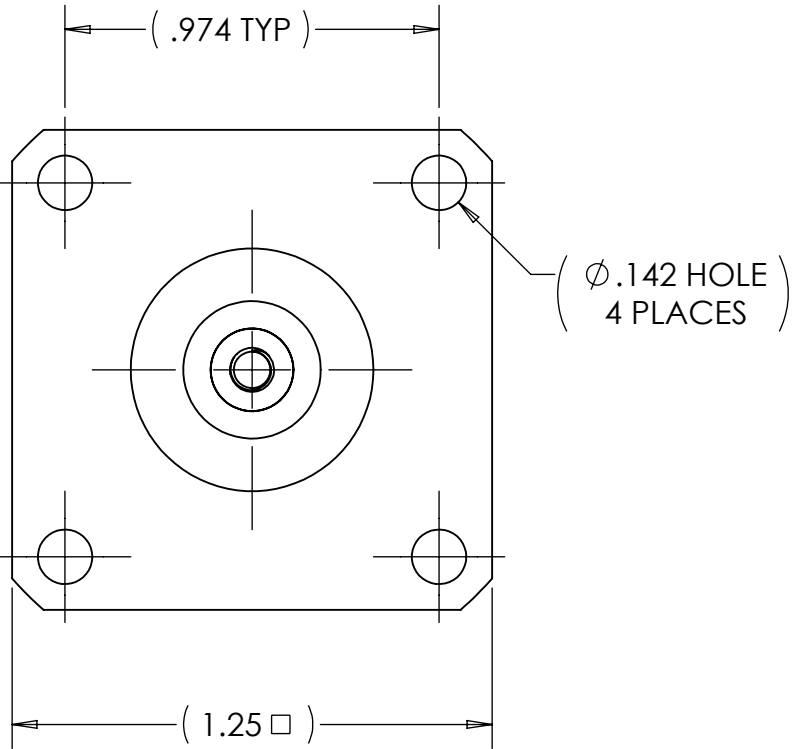
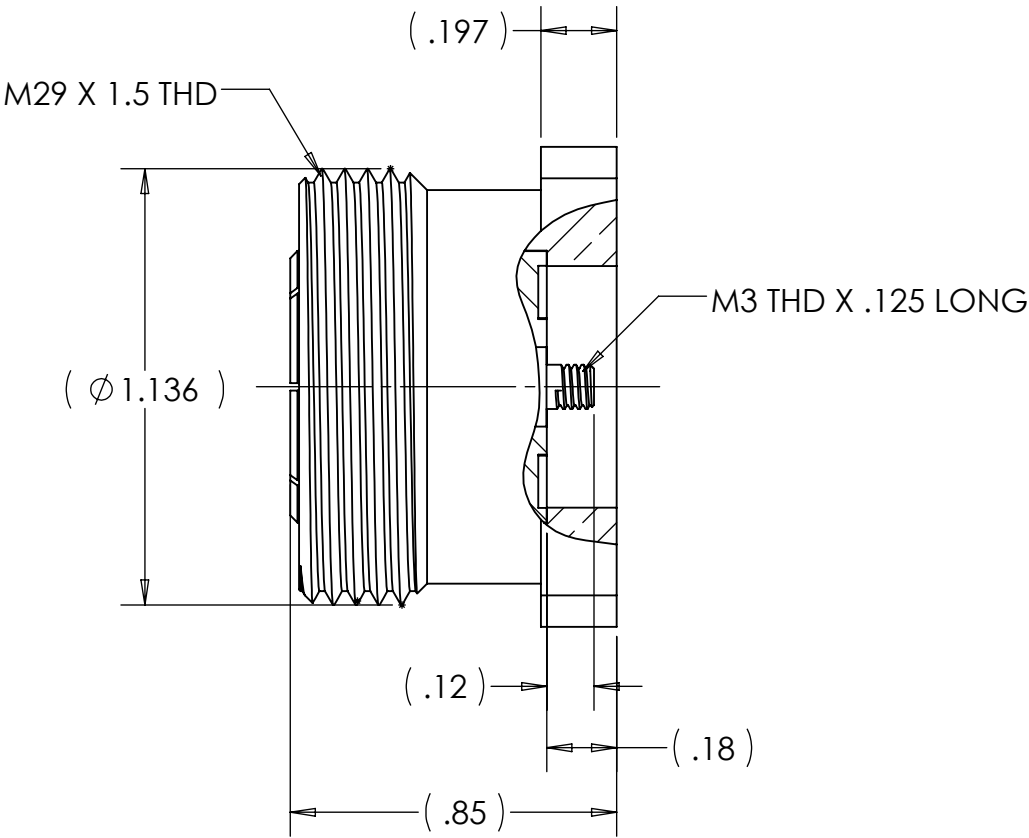
ELECTRICAL
IMPEDANCE: 50 OHMS
FREQUENCY RANGE: DC to 7.5 GHz
VOLTAGE RATING: 2,700 VOLTS RMS
PIM: < -155 dBc


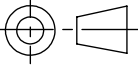
MECHANICAL
INTERFACE: PER IEC 169-4, DIN 47223

MATERIAL
INSULATOR: TEFLON
FEMALE CONTACT: BERYLLIUM COPPER
OUTER CONTACT: PHOSPHOR BRONZE
OTHER METAL PARTS: BRASS

FINISH
CENTER CONTACT: SILVER PLATED
OTHER METAL PARTS: TruLustre

NOTES:
1. UNLESS OTHERWISE SPECIFIED; ALL
DIMENSIONS ARE REFERENCE ONLY.



MATERIAL	DO NOT SCALE DRAWING	DRAWN MVC	DATE 08/08/11	<div>TRU CORPORATION 245 LYNNFIELD STREET, PEABODY, MA 01960 The Custom Interconnect Leader™</div>		
	UNLESS OTHERWISE SPECIFIED; DIMENSIONS ARE IN INCHES	ENG APPR. AM	DATE 08/18/11			
	TOLERANCES: FRACTIONS: ±1/64 .XX : ±.01 .XXX: ±.005 ANGLES: ±1/2° MACHINED SURFACES: <div>63/√</div>	MFG APPR.	DATE	TITLE: 7-16(f) RECEPTACLE, PANEL, FRONT MOUNTING		
		OTHER APPR.	DATE			
COMMENTS:	THIRD ANGLE PROJECTION 	SIZE B		DWG. NO. TRU-7002-0001-01		REV -
surface area: sq inch		CAGE CODE: 92180		SCALE: 2:1	SHEET 1 OF 1	
weight: 0.14 lbs						