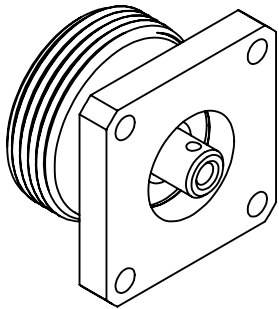


This document, including the design, configuration and mechanical features revealed herein are the sole, confidential and proprietary property of TRU Corporation. Reproduction or use thereof, in whole or part, is prohibited without the prior written consent of TRU Corporation.

REV.	DESCRIPTION	DATE	APPROVED
-	ORIGINAL ISSUE	09/01/11	AM



ENGINEERING DATA:

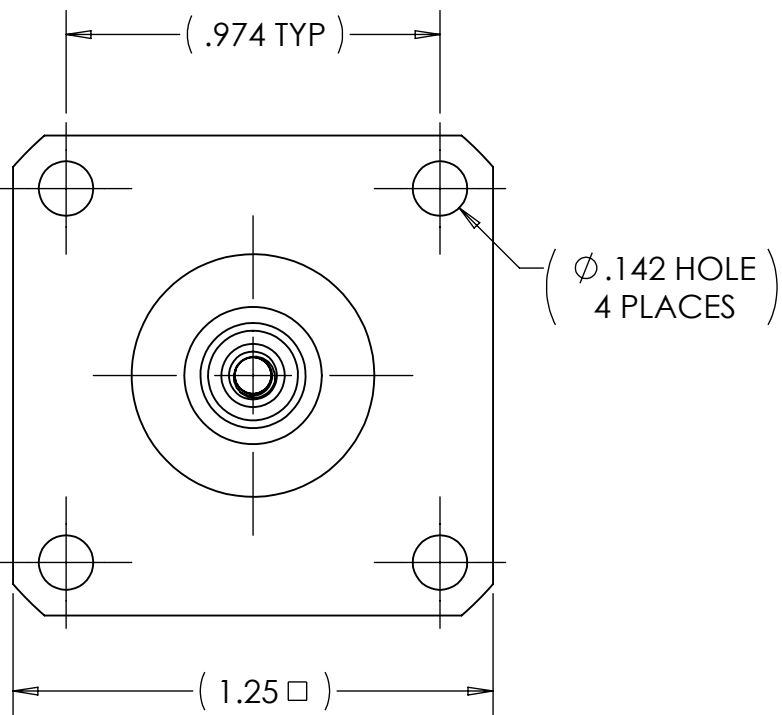
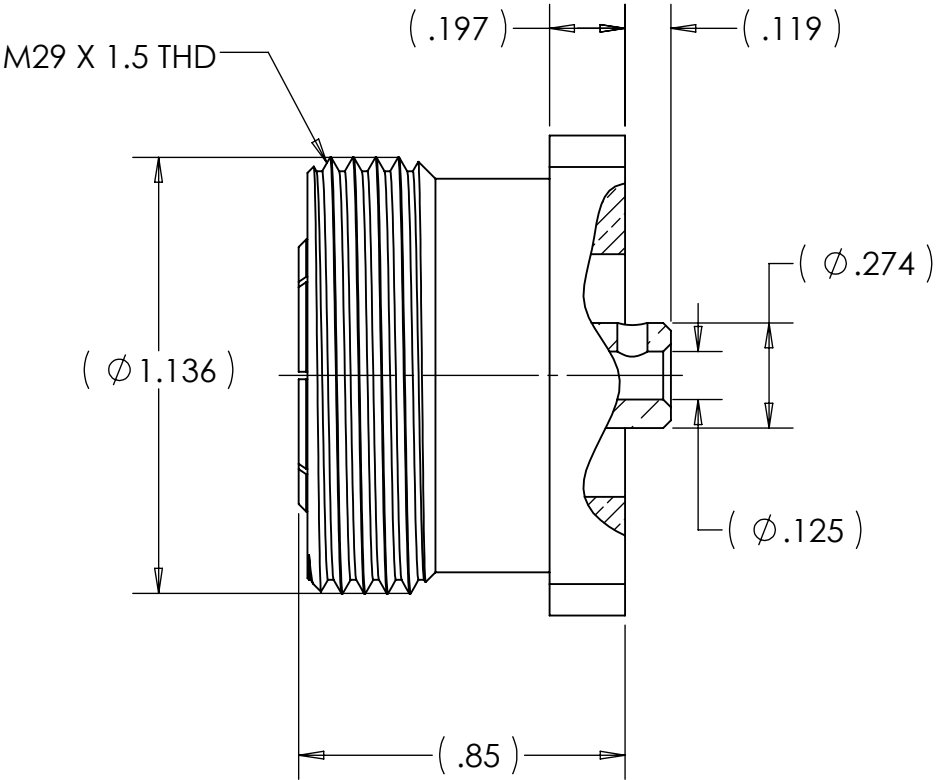
ELECTRICAL
IMPEDANCE: 50 OHMS
FREQUENCY RANGE: DC to 7.5 GHz
VOLTAGE RATING: 2,700 VOLTS RMS
PIM: < -155 dBc



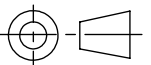
MECHANICAL
INTERFACE: PER IEC 169-4, DIN 47223

MATERIAL
INSULATOR: TEFLON
FEMALE CONTACT: BERYLLIUM COPPER
OUTER CONTACT: PHOSPHOR BRONZE
OTHER METAL PARTS: BRASS

FINISH
CENTER CONTACT: SILVER PLATED
OTHER METAL PARTS: TruLustre

NOTES:
1. UNLESS OTHERWISE SPECIFIED; ALL
DIMENSIONS ARE REFERENCE ONLY.



MATERIAL	DO NOT SCALE DRAWING	DRAWN MVC	DATE 08/08/11	<div>TRU CORPORATION 245 LYNNFIELD STREET, PEABODY, MA 01960 The Custom Interconnect Leader™</div> <div>TITLE: 7-16(f) RECEPTACLE, PANEL, FRONT MOUNTING</div>		
		ENG APPR. AM	DATE 08/18/11			
		MFG APPR.	DATE			
		OTHER APPR.	DATE			
COMMENTS:	UNLESS OTHERWISE SPECIFIED: DIMENSIONS ARE IN INCHES TOLERANCES: FRACTIONS: $\pm 1/64$.XX : $\pm .01$.XXX: $\pm .005$ ANGLES: $\pm 1/2^\circ$ MACHINED SURFACES: 	THIRD ANGLE PROJECTION 		SIZE B	DWG. NO. TRU-7002-0001-03	REV -
surface area: sq inch				CAGE CODE: 92180		SCALE: 2:1
weight: lbs				SHEET 1 OF 1		