

HUBER+SUHNER® DATA SHEET

EMP Protector: 3401.17.C



Description

GDT technology up to 1.0 GHz

Benefits

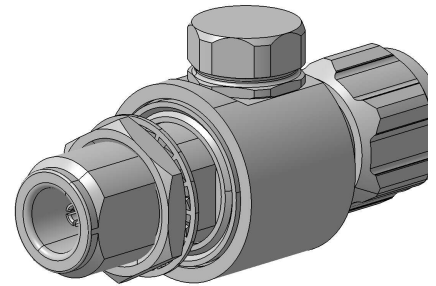
Broad-band operation

DC continuity for outdoor powering

The protector can also be installed reversely

Delivered without gas discharge tube

Data refer to GDT 9071.99.0547, 230 V



Product Configuration

Main path connectors	Port 1: <u>unprotected</u> , N plug (male) - Port 2: <u>protected</u> , N jack (female)
Mounting and grounding	MH12 (MH=bulkhead mounting)
Side of bulkhead	protected side

Technical Data

Electrical Data

Impedance	50 Ω
Frequency range	0 to 1000 MHz
Return loss	≥ 26.44 dB
Insertion loss	≤ 0.1 dB
RF CW power	≤ 150 W
PIM 3 rd order	not specified
Surge current handling capability	30 single / 20 multiple kA (test pulse 8/20 μ s)
Residual pulse energy	350 μ J typically (test pulse 4 kV 1.2/50 μ s / 2 kA 8/20 μ s) main path - protected side

Mechanical Data

Weight	90 g
--------	------

Environmental Data

Operating temperature	-40 °C to +85 °C
Waterproof degree	IP 65 (according to IEC 60529, data refer to the coupled state)
2002/95/EC (RoHS)	compliant

Material Data

Piece Parts

Housing	Brass
Port 1 center contact	Brass
Port 2 center contact	Copper Beryllium Alloy

Surface Plating

SUCOPLATE (R) Plating
Gold Plating (without Nickel underplating)
Gold Plating (without Nickel underplating)

Related Documents

Outline drawing	DOU-00057092.1
Mounting instruction	DOC-0000176104

HUBER+SUHNER is certified according to ISO 9001 and ISO 14001

WAIVER!

It is exclusively in written agreements that we provide our customers with warrants and representations as to the technical contained specifications and/or the fitness for any particular purpose. The facts and figures herein are carefully compiled to the best of our knowledge, but they are intended for general informational purposes only.



HUBER+SUHNER AG

RF Protection

9100 Herisau, Switzerland

Phone +41 (0)71 353 41 11

Fax +41 (0)71 353 47 51

www.hubersuhner.com

HUBER+SUHNER – Excellence in Connectivity Solutions