

HUBER+SUHNER® DATA SHEET

EMP Protector: 3401.18.A

Rev.: F



Description

GDT technology up to 1.0 GHz

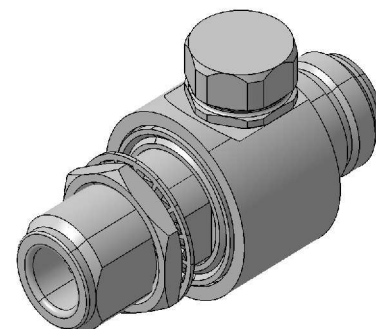
Benefits

DC continuity for outdoor powering

The protector can also be installed reversely

Delivered without gas discharge tube

Data refer to GDT 9071.99.0547, 230 V



Product Configuration

Main path connectors

Port 1: unprotected, N jack (female) - Port 2: protected, N jack (female)

Mounting and grounding

MH12 (MH=bulkhead mounting)

Side of bulkhead

Technical Data

Electrical Data

Impedance

75 Ω

Frequency range

0 to 500 MHz

Return loss

≥ 20.8 dB

Insertion loss

≤ 0.1 dB

RF CW power

≤ 100 W

PIM 3rd order

not specified

Surge current handling capability

30 single / 20 multiple kA (test pulse 8/20 μ s)

Residual pulse energy

350 μ J typically (test pulse 4 kV 1.2/50 μ s / 2 kA 8/20 μ s) main path - protected side

Mechanical Data

Weight

92 g

Environmental Data

Operating temperature

-40 °C to +85 °C

Waterproof degree

IP 65 (according to IEC 60529, data refer to the coupled state)

2002/95/EC (RoHS)

compliant

Material Data

Piece Parts

Housing

Material

Brass

Port 1 center contact

Copper Beryllium Alloy

Port 2 center contact

Copper Beryllium Alloy

Surface Plating

SUCOPLATE (R) Plating

Gold Plating (without Nickel underplating)

Gold Plating (without Nickel underplating)

Related Documents

Outline drawing

DOU-00003951.1

Mounting instruction

DOC-0000176104

HUBER+SUHNER is certified according to ISO 9001 and ISO 14001

WAIVER!

It is exclusively in written agreements that we provide our customers with warrants and representations as to the technical contained specifications and/or the fitness for any particular purpose. The facts and figures herein are carefully compiled to the best of our knowledge, but they are intended for general informational purposes only.



HUBER+SUHNER AG

RF Protection

9100 Herisau, Switzerland

Phone +41 (0)71 353 41 11

Fax +41 (0)71 353 47 51

www.hubersuhner.com

HUBER+SUHNER – Excellence in Connectivity Solutions