

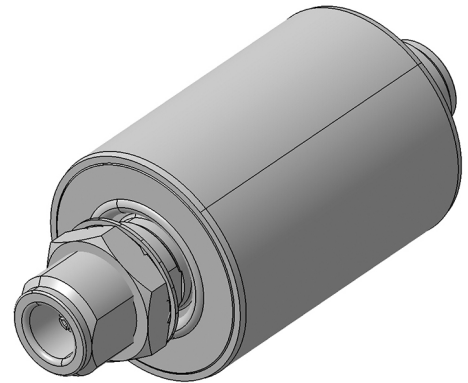
EMP Protector 3403.17.0069

Description

Fine protector hybrid technology

Benefits

Multi-band operation
 DC continuity for remote powering
 Permanently installed gas discharge tube
 Compliant to IEC 61643-21



Product Configuration

Main path connectors	Port 1: <u>unprotected</u> , N jack (female) - Port 2: <u>protected</u> , N jack (female)
Mounting and grounding	MH12 (bulkhead mounting), brk (bracket)
Side of bulkhead	protected side

Technical Data

Electrical Data

Impedance	50 Ω		
Frequency range	5.5 - 400 MHz	40 - 55 MHz	55 - 400 MHz
Return loss	≥ 10 dB	≥ 20 dB	≥ 26 dB
Insertion loss	≤ 1 dB	≤ 0.25 dB	≤ 0.25 dB
RF CW power		≤ 100 W	≤ 100 W
PIM 3rd order	not specified		

DC supply voltage	≤ 60 V
DC current	≤ 4 A
Surge current handling capability	8 multiple kA (test pulse 8/20 μ s)
Residual pulse energy	60 μ J typically (test pulse 4 kV 1.2/50 μ s / 2 kA 8/20 μ s) main path - protected side

Mechanical Data

Number of matings	100
Weight	93 g

Environmental Data

Operating temperature	-40 °C to +85 °C
Waterproof degree	IP67 (according to IEC 60529, data refer to the coupled state)
2011/65/EU (RoHS)	Compliant exempt. 7(b)

Material Data

Piece Parts	Material	Surface Plating
Housing	Aluminium	
Port 1 center contact	Bronze	Gold Plating (without Nickel underplating)
Port 2 center contact	Bronze	Gold Plating (without Nickel underplating)

Related Documents

Outline drawing	DOU-00195876
Mounting instruction	DOC-0000176104

Remarks

Recommendation: if this protector is mated with connectors made of copper-alloy base material and trimetal or nickel plating the connector area must be taped to improve long-term durability.

