

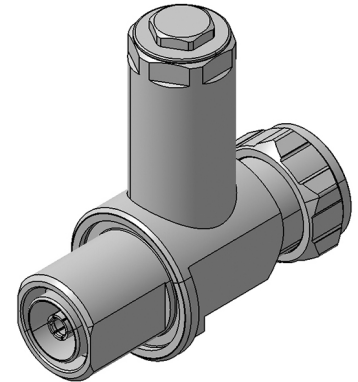
## EMP Protector 3409.41.0092

### Description

High-power/low-IM GDT hybrid technology

#### Benefits

Multi-band operation  
 DC continuity for remote powering  
 The protector can also be installed reversely  
 AISG compliant for 2.176 MHz carrier  
 Replaceable GDT 9071.99.0548, (90 V) included  
 Compliant to IEC 61643-21



### Product Configuration

Main path connectors	Port 1: <u>unprotected</u> , 7/16 plug (male) - Port 2: <u>protected</u> , 7/16 jack (female)
Mounting and grounding	MH110 (bulkhead mounting), M8 (screw), brk (bracket)
Side of bulkhead	protected side

### Technical Data

#### Electrical Data

Impedance	50 $\Omega$	
Frequency range	10 MHz	690 - 2690 MHz
Return loss	18 dB typ.	$\geq 26$ dB
Insertion loss	0.1 dB typ.	$\leq 0.1$ dB
RF CW power		$\leq 1500$ W
PIM 3rd order		-160 dBc max.
DC supply voltage	$\leq 48$ V	
DC current	$\leq 13$ A	
Surge current handling capability	30 single / 20 multiple kA (test pulse 8/20 $\mu$ s)	
Residual pulse energy	350 $\mu$ J typically (test pulse 4 kV 1.2/50 $\mu$ s / 2 kA 8/20 $\mu$ s) main path - protected side	

#### Mechanical Data

Number of matings	500
Weight	495 g

#### Environmental Data

Operating temperature	-40 °C to +85 °C
Waterproof degree	IP67 (according to IEC 60529, data refer to the coupled state)
2011/65/EU (RoHS)	Compliant exempt. 7(b)

#### Material Data

Piece Parts	Material	Surface Plating
Housing	Brass	SUCOPLATE (R) Plating
Port 1 center contact	Brass	Silver Plating
Port 2 center contact	Bronze	Silver Plating

### Related Documents

Outline drawing	DOU-00205231
Mounting instruction	DOC-0000176104