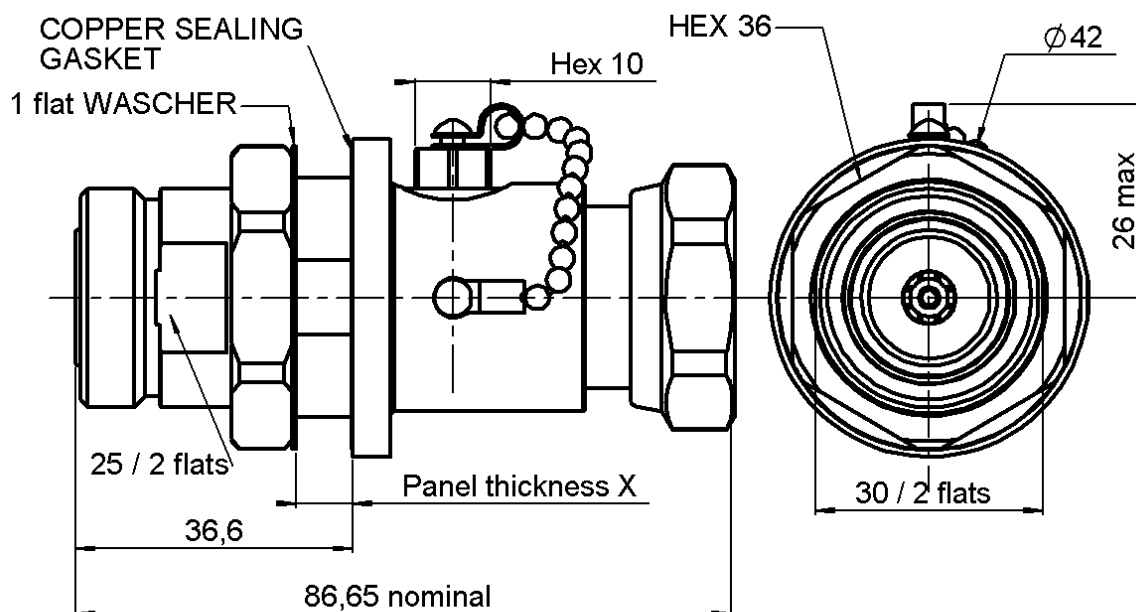


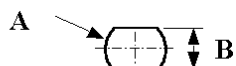
GAS DISCHARGE TUBE DC-2.5 GHz
BULKHEAD 7-16F TO 7-16 M WITH CHAIN

R445.G02.101

Series : GDT

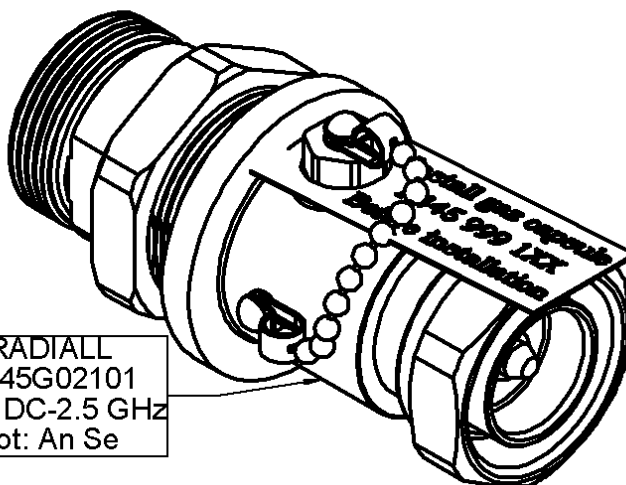


X: mini = 1.5
 maxi = 6

PANEL CUT OUT

	mm	
	Maxi	mini
A	32.4	32.2
B	30.5	30.3

RADIALL
 R445G02101
 GDT DC-2.5 GHz
 Lot: An Se



All dimensions are in mm.



COMPONENTS	MATERIALS	PLATINGS (µm)
BODY	BRASS	BBR 0.5 OVER SILVER 3
CENTER CONTACT	BERYLLIUM COPPER, BRASS	BBR 0.5 OVER SILVER 3
OUTER CONTACT	BRASS	BBR 0.5 OVER SILVER 5
INSULATOR	PTFE	
GASKET	COPPER	
OTHERS PARTS	BRASS	BBR 2
-	-	-
-	-	-

Issue : 0339 A

In the effort to improve our products, we reserve the right to make changes judged to be necessary.



GAS DISCHARGE TUBE DC-2.5 GHZ
BULKHEAD 7-16F TO 7-16 M WITH CHAIN

R445.G02.101Series : **GDT****PACKAGING**

Standard	Unit	Other
1	-	Contact us

SPECIFICATION**ELECTRICAL CHARACTERISTICS**

Impedance		50	Ω
First frequency band	0 to	2500	MHz
VSWR		1.2	Maxi
Insertion loss		0.2	dB Maxi
Second frequency band	NA to	NA	MHz
VSWR		NA	Maxi
Insertion loss		NA	dB Maxi
RF leakage	- (100	- F(GHz)) dB Maxi
Residual Voltage	350 V at	2.5	kA (8/20 μ s test pulse waveform)
Intermodulation		NA	dBm (2x20W)

SURGE ARRESTER CAPSULE

(Not supplied)

Form	BUTTON METAL-CERAMIC DIA8x6
Radiall part number :	SEE TDS R4459991**
Recommended torque for nut	600 N.cm

OTHERS CHARACTERISTICS

measured with R445.999.103 arrester

MECHANICAL CHARACTERISTICS

Protected connector	7-16 - FEMALE
Unprotected connector	7-16 - MALE
Center contact retention	
Axial force – Mating end	200 N mini
Axial force – Opposite end	100 N mini
Torque	NA N.cm mini
Recommended torque	
Mating (protected)	NA N.cm
Mating (unprotected)	3500 N.cm
Panel nut	3500 N.cm
Clamp nut	NA N.cm
A/F clamp nut	0.000 mm
Mating life	500 Cycles mini
Weight	428.799 g

ENVIRONMENTAL

Operating temperature	-40/+80 ° C
Hermetic seal	NA Atm.cm3/s
Panel leakage	IP67

Issue : 0339 A

In the effort to improve our products, we reserve the right to make changes judged to be necessary.

