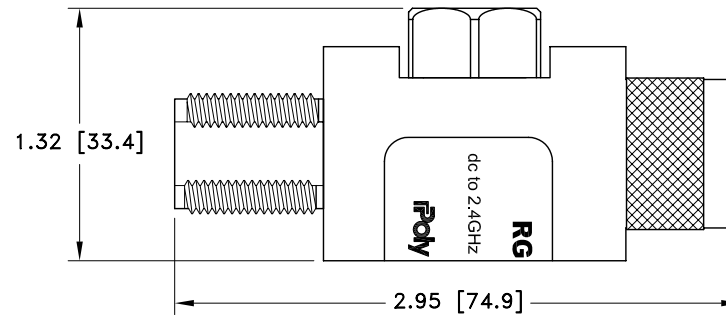
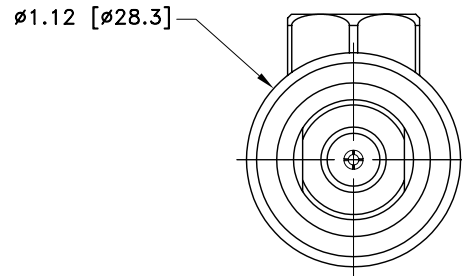


ALL DESIGN, OPERATIVE AND PROCESS DATA PERTAINING TO THE ARTICLE SHOWN ON THIS SHEET IS THE PROPERTY OF POLYPHASE CORPORATION. THE INFORMATION IS NOT TO BE COPIED, REPRODUCED, REVEALED TO OR APPROPRIATED BY OTHERS WITHOUT THE EXPRESS WRITTEN CONSENT OF POLYPHASE CORPORATION.

REVISIONS

REV LTR	DATE	ENG	MKTG	Q.A.
A	01/09/01 ^{IB}	KCB	PH	RM
B	03/03/03 ^{SH}	JJ	SD	LJ



MAXIMUM CHARACTERISTICS

APPLICATION:

BULKHEAD MOUNT (SINGLE DOUBLE 'D') WEATHERPROOF

FREQUENCY RANGE:

DC TO 2.4GHz

VSWR:

≤1.28:1 OVER FREQUENCY RANGE

INSERTION LOSS:

≤0.25dB OVER FREQUENCY RANGE

MAX POWER:

50W @ 10MHz

10W @ 2GHz

TURN-ON:

±180Vdc±20%

DC:

UP TO ±60Vdc 10A MAX

OPERATING TEMPERATURE:

-40°C TO +85°C

STORAGE TEMPERATURE:

-40°C TO +85°C

RELATIVE HUMIDITY:

90% AT 40°C

VIBRATION

1G AT 5Hz TO 100Hz

ENVIRONMENTAL:

MEETS BELLCORE #TA-NWT-000487
PROCEDURE 4.11, WIND DRIVEN (120MPH)
RAIN INTRUSION TEST.

CUSTOMER APPROVAL: _____ DATE: _____

ALL DIMENSIONS SHOWN ABOVE ARE FOR REFERENCE ONLY.

DRAFTER J. CALLISTER	DATE 06/29/99	 P.O. BOX 9000 MINDEN, NV 89423 TEL: 775-782-2511 FAX: 775-782-4476 DWG NO/PART NO/DESCRIPTION RGT-ME CUSTOMER PRINT		
MECH ENGINEER P. SKROTZKI	DATE 07/07/99			
ELEC ENGINEER J. JONES	DATE 07/07/99			
MARKETING T. FRALEY	DATE 07/07/99			
QUALITY DEPT R. MATHEUS	DATE 07/08/99	CAGE CODE 61114	FILE NAME -C1	SCALE 1/1
		SHEET 1 OF 1		