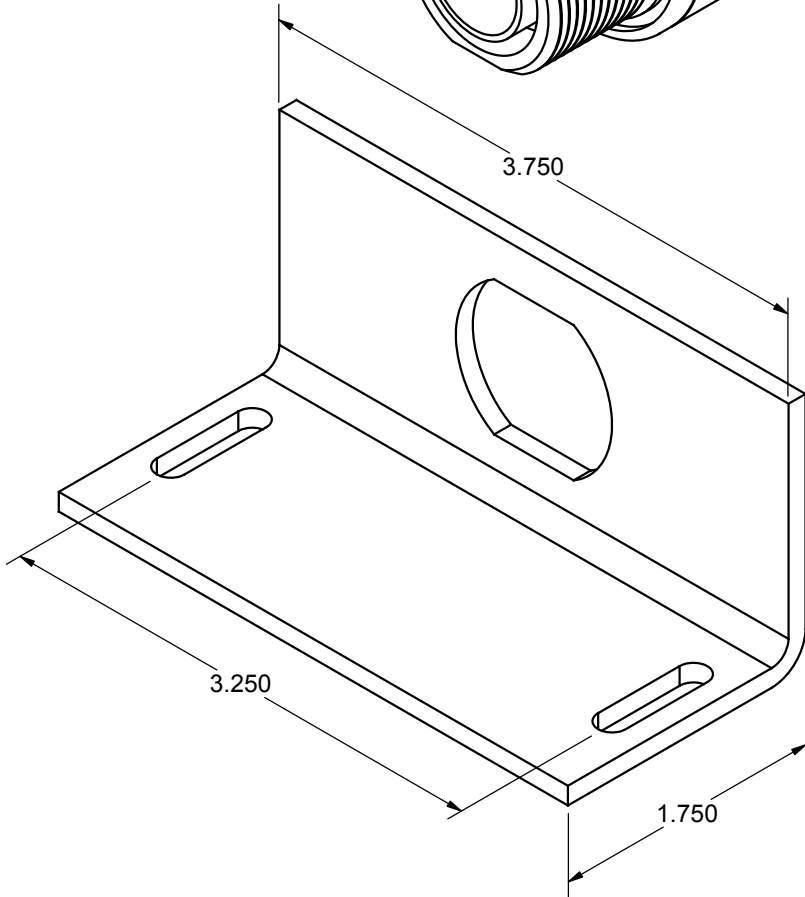
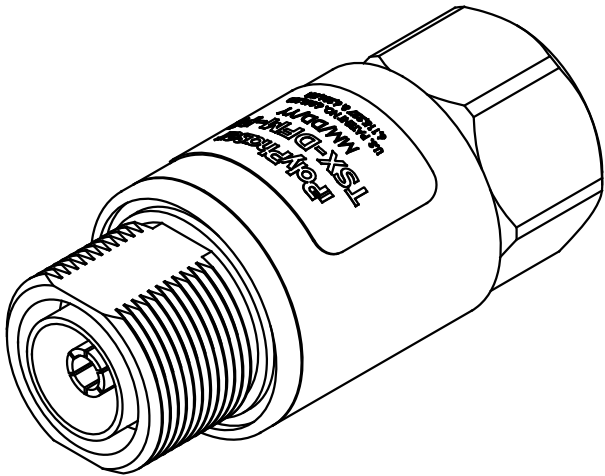
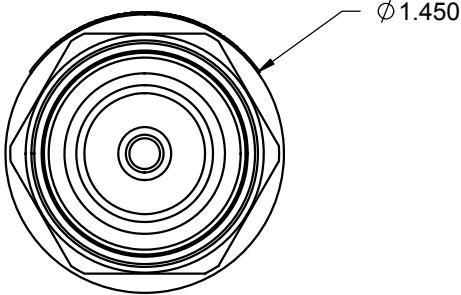
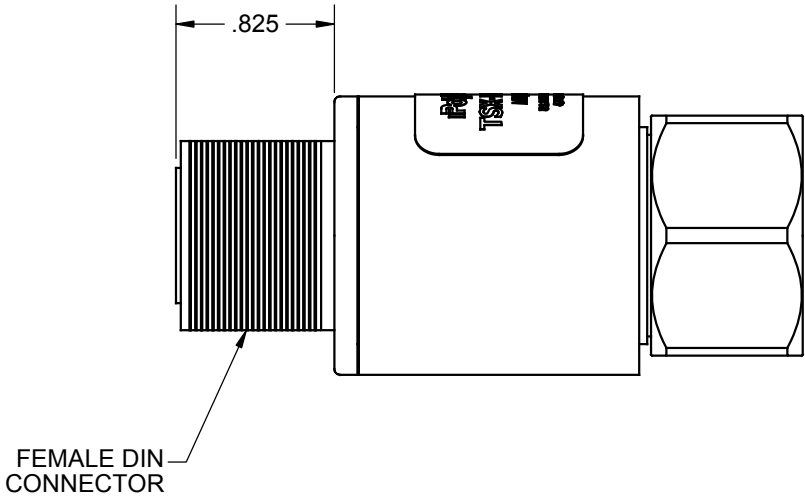
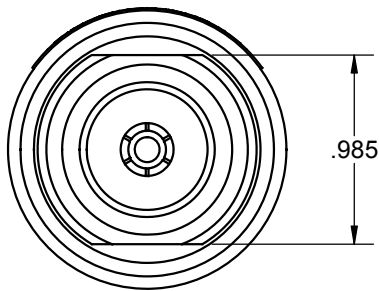


REVISIONS				
REV.	DESCRIPTION	ECN	DATE	APPROVED
C	REFER TO ECN	10406	1/27/11	CAP



MAXIMUM CHARACTERISTICS

APPLICATION:
DC SHORT/RF ONLY (NO POWER SUPPLY PROVISIONS)
BULKHEAD MOUNT BI-DIRECTIONAL
WEATHERPROOF WHEN INSTALLED
BRACKET MATERIAL: ALUMINUM

FREQUENCY RANGE:
698MHz TO 1.0GHz @ -30dB RETURN LOSS
1.8GHz TO 2.16GHz @ -30dB RETURN LOSS
1.0GHz TO 1.8 GHz @ -26dB RETURN LOSS

MAX SURGE:
IEC 61000-4-5 8/20µs WAVEFORM
20kA MULTIPLE STRIKES
40kA ONE TIME

INSERTION LOSS:
≤0.1dB

CONTINUOUS POWER:
500W @ 920MHz
(750W @ 50 °C)

MAX PEAK INSTANTANEOUS POWER (PIP):
27kW

LET THROUGH VOLTAGE:
≤±200mV FOR 3kA @ 8/20µs WAVEFORM

THROUGHPUT ENERGY:
≤5µJ FOR 3kA @ 8/20µs WAVEFORM

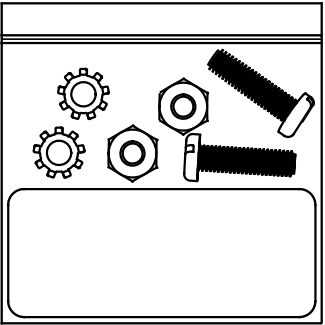
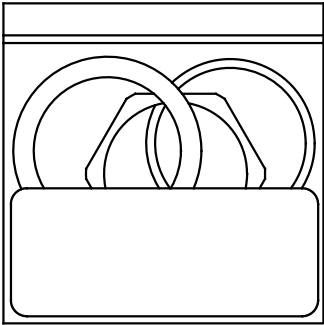
PIM 3rd ORDER:
>-120dBm; 2 X 20W

TEMPERATURE:
-50 °C TO +85 °C STORAGE/OPERATING

VIBRATION:
1G @ 5Hz TO 100Hz


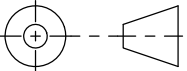
MATERIAL:
BODY: TRI-M3™ PLATING OVER BRASS
PTFE: DIELECTRIC
CENTER PINS: TRI-METAL

ENVIRONMENTAL:
MEETS IEC 60529 IP67
MEETS BELLCORE #TA-NWT-000487
PROCEDURE 4.11, 120MPH WIND DRIVEN
RAIN INTRUSION TEST



CUSTOMER APPROVAL: _____ DATE: _____

ALL DIMENSIONS SHOWN ARE FOR REFERENCE ONLY.

UNLESS OTHERWISE SPECIFIED LEADING DIMENSIONS ARE INCHES DIMENSIONS IN [] ARE MILLIMETERS		DRAWN R. DUNNING	DATE 09/30/10			
		ENG APPD C. PENWELL	12/02/10			
TOLERANCES: FRACTIONS=± 1/32 .XX=± .01 ANGLES=± 1 ° .XXX=± .005		PRODUCT MGR S. DOTTER	12/02/10	TITLE BI-DIRECTIONAL BROADBAND DC SHORT FILTER DIN P2 W/BRACKET		
		MARKETING APPD		CUSTOMER SPECIFICATION		
MATERIAL .		PROJECT NO. .		SIZE B	CAGE 61114	PART NUMBER TSX-DFM-P2-BF
				SCALE 1:1	DOCUMENT NAME TSX-DFM-P2-BF-C	REV C
THIRD-ANGLE PROJECTION 		NOTICE: THE INFORMATION AND DESIGN IN THIS DOCUMENT IS THE PROPERTY OF POLYPHASER CORPORATION. ALL RIGHTS RESERVED.		SHEET 1 OF 1		
				protection technology group POLYPHASER TRANSECTOR DOWIN LEA RO ASSOCIATES		

THESE COMMODITIES, TECHNOLOGY OR
SOFTWARE WERE EXPORTED FROM THE
UNITED STATES IN ACCORDANCE WITH THE
EXPORT ADMINISTRATION REGULATIONS.
DIVERSION CONTRARY TO U.S. LAW PROHIBITED.