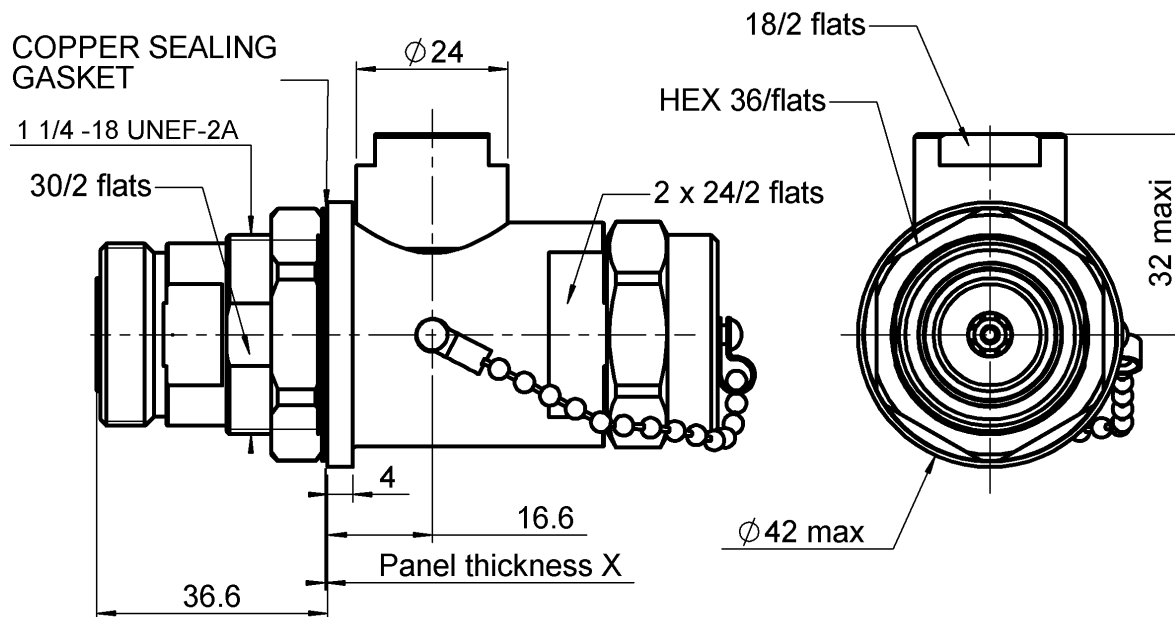
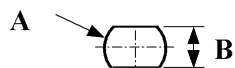


MULTIBAND QUARTER WAVE STUB 870-2200**BULKHEAD 7-16F TO F WITH CHAIN&CAP****R445.M02.001**

Series : MBQWS

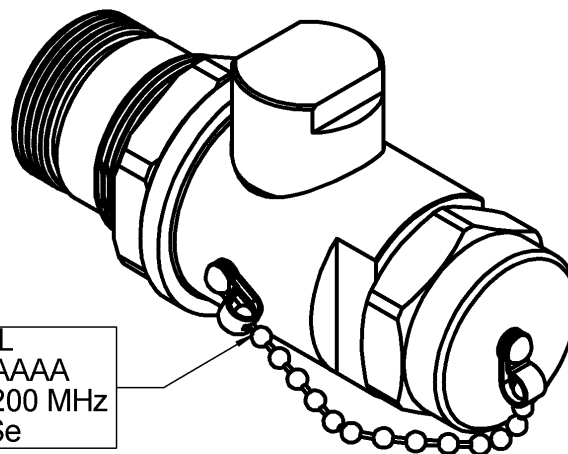


X : mini = 2
maxi = 7

PANEL CUT OUT

	mm	
	Maxi	mini
A	32.2	32
B	30.4	30.2

Etiquette
LABEL
RADIALL
3BK 25444 AAAA
MBQWS 870-2200 MHz
Lot: An Se



All dimensions are in mm.



COMPONENTS	MATERIALS	PLATINGS (μm)
BODY	BRASS	BBR-0.5 OVER SILVER 3
CENTER CONTACT	BERYLLIUM COPPER, BRASS	BBR 0.5 OVER SILVER 3
OUTER CONTACT	BRASS	BBR-0.5 OVER SILVER 5
INSULATOR	PTFE	
GASKET	SILICONE RUBBER	
OTHERS PARTS	BRASS	BBR
-	-	-
-	-	-

Issue : 0117 A

In the effort to improve our products, we reserve the right to make changes judged to be necessary.



MULTIBAND QUARTER WAVE STUB 870-2200**BULKHEAD 7-16F TO F WITH CHAIN&CAP****R445.M02.001**

Series : MBQWS

PACKAGING

Standard	Unit	Other
1	-	Contact us

SPECIFICATION

ALCATEL A 00

ELECTRICAL CHARACTERISTICS

Impedance		50 Ω
First frequency band	870 to 970	MHz
VSWR		1.1 Maxi
Insertion loss		0.1 dB Maxi
Second frequency band	1700 to 2200	MHz
VSWR		1.1 Maxi
Insertion loss		0.1 dB Maxi
RF leakage	- (100 - F(GHz)) dB Maxi
Residual Voltage	15 V at	2.5 kA (8/20 μ s test pulse waveform)
Intermodulation		-110 dBm (2x20W)

SURGE ARRESTER CAPSULE

(Not supplied)

Form	NA
Radiall part number :	NA
Recommended torque for nut	NA N.cm

OTHERS CHARACTERISTICS**MECHANICAL CHARACTERISTICS**

Protected connector	7-16 - FEMALE
Unprotected connector	7-16 - FEMALE
Center contact retention	
Axial force – Mating end	N mini
Axial force – Opposite end	N mini
Torque	N.cm mini
Recommended torque	
Mating (protected)	N.cm
Mating (unprotected)	N.cm
Panel nut	3500 N.cm
Clamp nut	N.cm
A/F clamp nut	0.000 mm
Mating life	500 Cycles mini
Weight	625.443 g

ENVIRONMENTAL

Operating temperature	-40/+80 °C
Hermetic seal	Atm.cm3/s
Panel leakage	IP67

Issue : 0117 A

In the effort to improve our products, we reserve the right to make changes judged to be necessary.

