

TERMINATIONS

7/16 - DIN, DC - 7.5 GHz, 5 Watts

SPECIFICATIONS:

Models: 3073DM, 3073DF, 3073DMC, 3073DFC

RoHS
Compliant

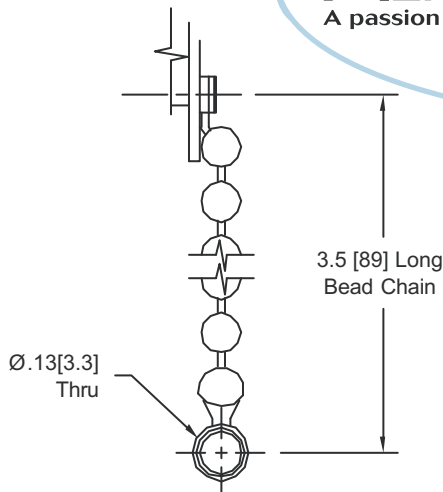
Electrical:

Frequency Range _____ DC - 7.5 GHz
VSWR:
DC - 4 GHz _____ 1.25:1 Max.
4 - 7.5 GHz _____ 1.45:1 Max.
Impedance _____ 50 Ohms
Input Power _____ 5 Watts Avg. @ +25°C
Derated Linearly to 1 Watt @ +125°C
Peak Power _____ 5 kW Max.
(5uSec Pulse, .05% Duty Cycle)
Mates with MIL-STD-348
Operating Temp Range _____ -65°C to +125°C

Mechanical:

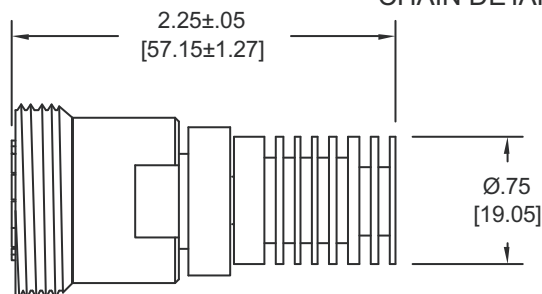
7/16 DIN Connectors _____ Silver Plated Brass
Housing _____ Anodized Aluminum
Conductors _____ Silver Plated Beryllium Copper or Brass
Bead Chain _____ Passivated Stainless Steel

AEROFLEX
A passion for performance.

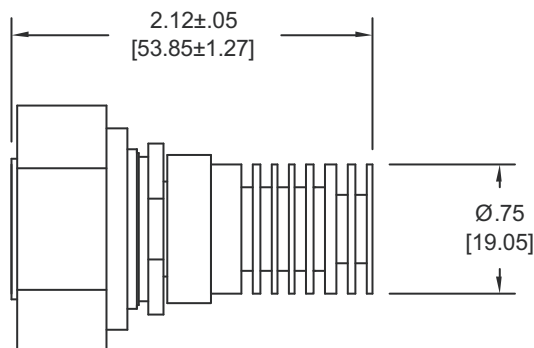


CHAIN DETAIL

Model Number: **3073DF**
7/16-DIN Female Connector



Model Number: **3073DM**
7/16-DIN Male Connector



HOW TO ORDER:

Model Number: **3073DXY**
Connector Configuration _____ Style
M = Male = No Chain
F = Female C = Chain Included

Ordering Examples:

Model Number: **3073DMC**
DC - 7.5 GHz; 7/16 DIN Male; Chain Included

Model Number: **3073DF**
DC - 7.5 GHz; 7/16 DIN Female; No Chain

Model Number: **3073DM**
DC - 7.5 GHz; 7/16 DIN Male; No Chain

Note: Dimensions in Brackets are Expressed in Millimeters and are for Reference Only.
Design, specifications are subject to change without notice. Contact factory for technical specifications before purchasing and/or use.

3073D: REV -

AEROFLEX
INMET

Aeroflex / Inmet, Inc. 300 Dino Drive, Ann Arbor, MI 48103 • U.S.A.
888-244-6638 or 734-426-5553 • FAX: 734-426-5557
www.aeroflex-inmet.com • inmet-sales@eroflex.com