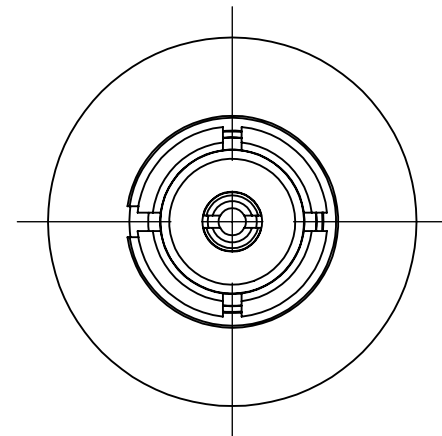


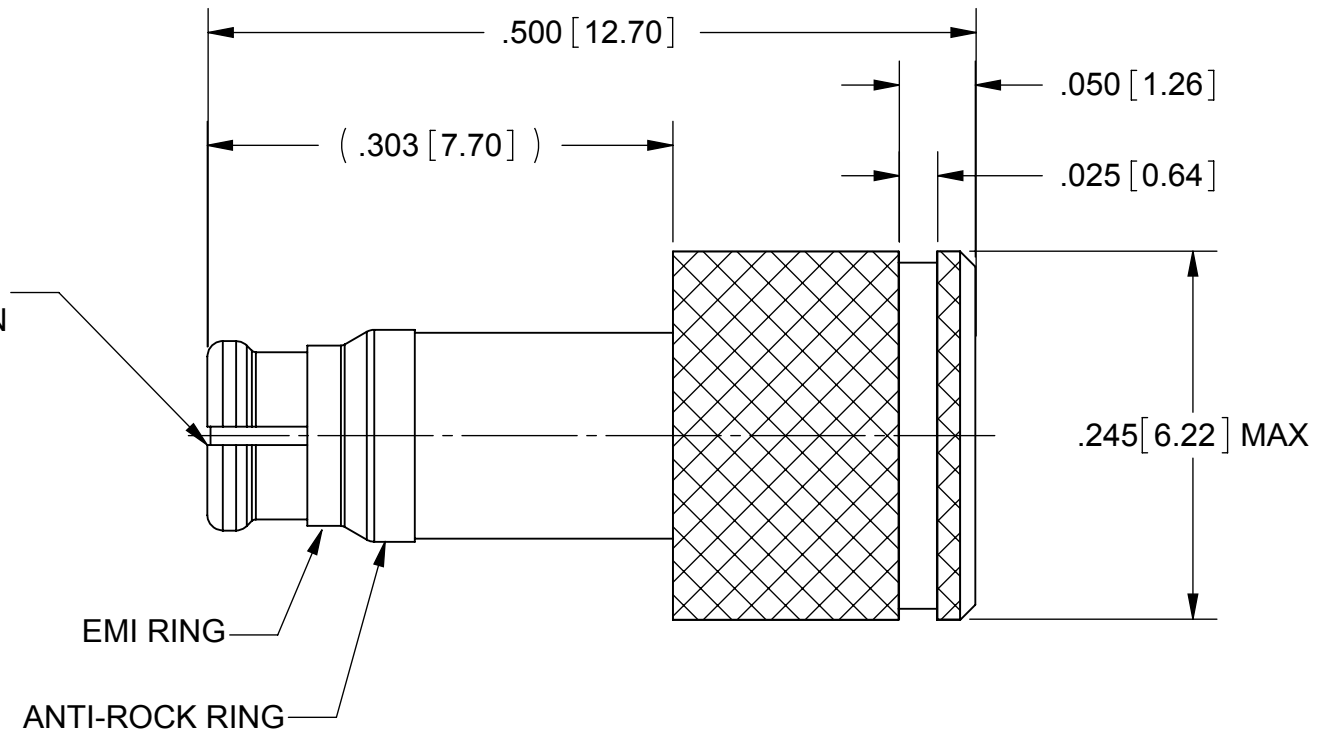
ROHS COMPLIANT

PRODUCT DATA DRAWING

REVISION HISTORY			
REV	DESCRIPTION	DATE	APPROVED
-	DCN 40912	11/14	STW



SMP INTERFACE
PER MIL-STD-348
ACCEPTS $\phi .015$ [.38] PIN



**MATERIALS;
BODY, CONTACT,
EMI-RING, CAP &
ANTI-ROCK RING:**

BERYLLIUM COPPER ALLOY PER ASTM B196
ALLOY No. UNS17300 TD04
PTFE PER ASTM D1710
ALUMINA SUBSTRATE WITH NICHROME RESISTOR

INSULATOR:
RESISTOR ELEMENT:

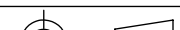
FINISHES:
BODY, CONTACT,
EMI-RING, CAP &
ANTI-ROCK RING:

GOLD PER ASTM B488, TYPE II, GRADE C,
CLASS 1.27, OVER NICKEL PER AMS-QQ-N-290, CLASS 1

ELECTRICAL:
IMPEDANCE:
FREQ. RANGE:
VSWR:
AVG. POWER:

50 OHMS
DC TO 26.5 GHZ
1.25:1, DC TO 26.5 GHZ
2 WATTS (POWER INPUT DERATED LINEARLY
FROM 25°C TO .2 WATTS AT 125°C)
50 WATTS, PULSE WIDTH OF 5 MICROSECONDS
AND A DUTY CYCLE OF 5 X10-4

PEAK POWER:

MATERIAL:	SEE NOTES	DIMENSIONS ARE IN INCHES TOLERANCES:		UNLESS OTHERWISE SPECIFIED		<div>SV Microwave, Inc.</div> <div>2400 Centrepark West Drive, Suite 100 West Palm Beach, FL 33409</div>		
FINISH:	SEE NOTES	FRACTIONAL: ±1/64 ANGULAR: X° ±1°0' X°X' ±15'		1) ALL DIMENSIONS ARE IN INCHES (MILLIMETERS) 2) ALL DIMENSIONS ARE AFTER PLATING. 3) BREAK CORNERS & EDGES .005 R. MAX. 4) CHAM. 1ST & LAST THREADS. 5) SURFACE ROUGHNESS 63μ MIL-STD-10. 6) DIA.'S ON COMMON CENTERS TO BE CONCENTRIC WITHIN .005 T.I.R. 7) REMOVE ALL BURRS				
SURFACE AREA:	N/A	DECIMAL: X ±.030 .XX ±.010 .XXX ±.005				TITLE:		
<div>PROPRIETARY</div> <div>THE INFORMATION CONTAINED IN THIS DRAWING IS THE SOLE PROPERTY OF SV MICROWAVE, INC. ANY REPRODUCTION IN PART OR AS A WHOLE WITHOUT THE WRITTEN PERMISSION OF SV MICROWAVE, INC IS PROHIBITED.</div>		INTERPRET DIMENSIONS AND TOLERANCES PER ASME Y14.5M - 1994				SMP FEMALE TERMINATION 2 WATTS		
		THIRD ANGLE PROJECTION		DRAWN: MAL 11/04/14		SIZE	CAGE CODE	DWG. NO.
				CHECKED: STW 11/04/14		B	95077	8012-4013
				APPROVED: STW 11/04/14		SCALE: 8:1		SHEET 1 OF 1