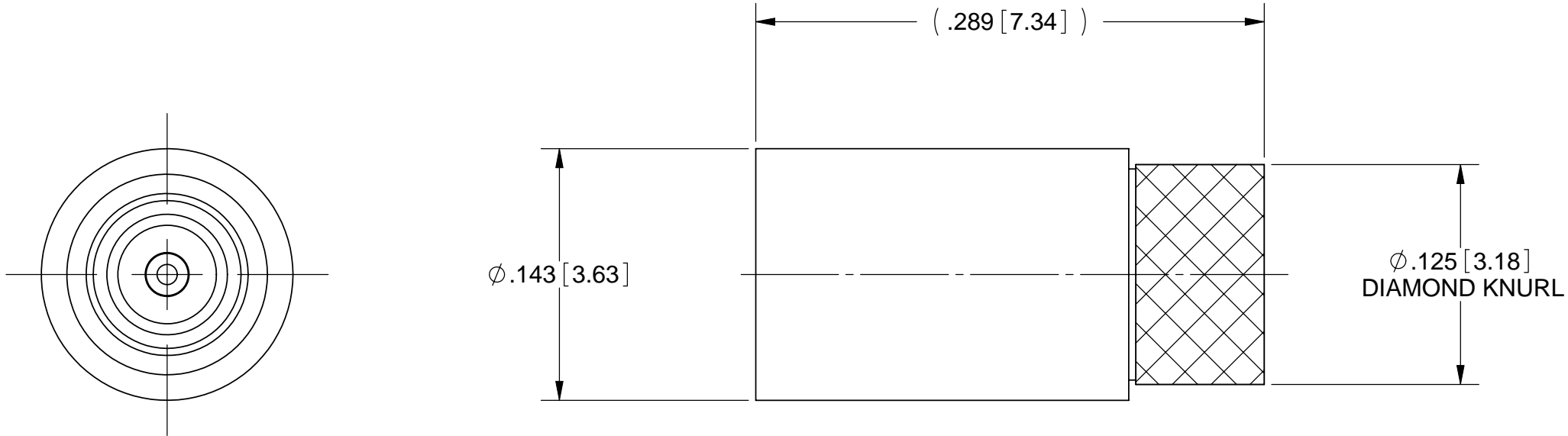


ROHS COMPLIANT

PRODUCT DATA DRAWING

REVISION HISTORY			
REV	DESCRIPTION	DATE	APPROVED
-	DCN 36040	09/08	STW



MATERIAL:

MATING BODY:	STAINLESS STEEL PER AMS-5640, ALLOY UNS S30300, TYPE 1
CONTACT:	BERYLLIUM COPPER PER ASTM B196, ALLOY No. UNS C17300, TD04
REAR BODY:	BRASS PER ASTM B16, ALLOY UNS No. C36000
INSULATORS:	PTFE PER ASTM D1710, TYPE I, GRADE 1, CLASS B
RESISTOR ELEMENT:	ALUMINA SUBSTRATE WITH NICHROME RESISTOR

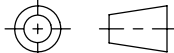
FINISH:

REAR BODY &
CONTACT: GOLD PER ASTM B488, TYPE II,
CODE C, CLASS 1.27; OVER NICKEL
PER AMS-QQ-N-290, CLASS 1, .00005" MIN.

MATING BODY: PASSIVATED PER AMS-2700, TYPE 2

PERFORMANCE:

IMPEDANCE: 50 OHMS
FREQ. RANGE: DC TO 40.0 GHz
VSWR: 1.20:1 DC TO 18.0 GHz
1.30:1 18.0 GHz TO 40.0 GHz

		SV P/N		INTERFACE	
		8032-6001		FD	
		8032-6002		SB	
MATERIAL: SEE NOTES		DIMENSIONS ARE IN INCHES TOLERANCES:		SV Microwave, Inc. 2400 Centrepark West Drive, Suite 100 West Palm Beach, FL 33409 SMPM MALE 1/2 W TERMINATION	
FINISH: SEE NOTES		FRACTIONAL: $\pm 1/64$ ANGULAR: $X^{\circ} \pm 1^{\circ}0'$ $X^{\circ}X' \pm 15'$			
SURFACE AREA: N/A		DECIMAL: $.X \pm .030$ $.XX \pm .010$ $.XXX \pm .005$			
PROPRIETARY		INTERPRET DIMENSIONS AND TOLERANCES PER ASME Y14.5M - 1994			
THE INFORMATION CONTAINED IN THIS DRAWING IS THE SOLE PROPERTY OF SV MICROWAVE, INC. ANY REPRODUCTION IN PART OR AS A WHOLE WITHOUT THE WRITTEN PERMISSION OF SV MICROWAVE, INC IS PROHIBITED.		THIRD ANGLE PROJECTION		UNLESS OTHERWISE SPECIFIED 1) ALL DIMENSIONS ARE IN INCHES (MILLIMETERS) 2) ALL DIMENSIONS ARE AFTER PLATING. 3) BREAK CORNERS & EDGES .005 R. MAX. 4) CHAM: 1ST & LAST THREADS. 5) SURFACE ROUGHNESS 63-MIL-STD-10. 6) DIA.'S ON COMMON CENTERS TO BE CONCENTRIC WITHIN .005 T.I.R. 7) REMOVE ALL BURRS	
		DRAWN: DAL 09/03/08		TITLE: SIZE B CAGE CODE 95077 DWG. NO. 8032-600X SCALE: 12:1	
		CHECKED: STW 09/03/08 APPROVED: STW 09/03/08			
				SHEET 1 OF 1	