

AirLink™ GX400

Multi-Purpose Intelligent Gateway

Fully Featured for Mobile and Fixed Environments

RUGGED VERSATILITY

The AirLink GX400 multi-purpose intelligent gateway is ideal for a myriad of machine-to-machine applications. A small, rugged form factor and multiple interfaces give the GX400 the versatility for location-aware applications in mobile and fixed environments at an affordable price.

EXPANDABLE, FLEXIBLE, MODULAR PLATFORM

The GX400 achieves high performance and reliability, and offers GPS, 3G mobile broadband connectivity, and ALEOS intelligence. An expansion slot enables the easy addition of I/O and communications ports, providing unparalleled flexibility and versatility. The existence of the expansion slot on the GX400 enables feature additions without comprehensive design changes and/or further certification. Coupled with the AirLink Management Services, the GX400 is an ideal solution for a wide range of M2M applications.

The GX400 is designed for use in mobile environments (AVL/tracking, field service, public safety) or fixed/portable settings (industrial, utilities, security, enterprise, point-of-sale). A “one device fits all” solution allows customers to deploy and manage the same device for multiple applications, simplifying deployment and management.

RUGGED INTELLIGENCE

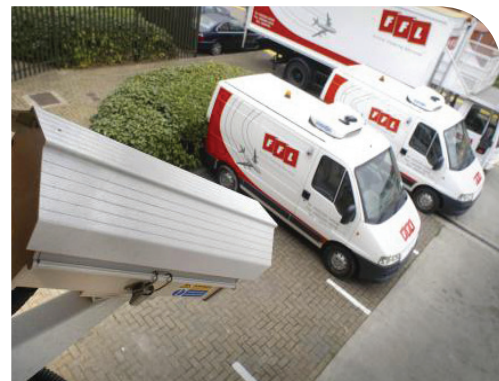
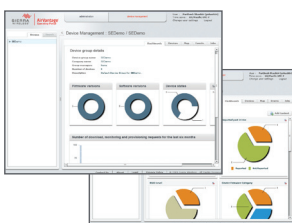
ALEOS™, the long-standing industry benchmark for embedded intelligence, powers AirLink devices, and supports 24/7 always-on availability, persistent connectivity, end-to-end security, real-time two-way data exchange, and remote device management. Designed to meet the needs of industrial M2M, enterprise solutions and mobile applications, ALEOS features embedded machine protocols, routing and location protocols. To ensure reliable, advanced security, ALEOS includes IPsec VPN and GRE tunneling.

REMOTE MANAGEMENT

ALEOS facilitates the comprehensive remote management capabilities of AirLink Management Services (AMS) to enable remote configuration, administration, and control of deployments of any size, from one device to thousands.

A comprehensive hosted one-to-many remote device management tool, AMS' feature rich capabilities allow customers to remotely update firmware, check device status, schedule commands and much more.

Together, ALEOS and AMS provide a cloud solution that requires minimal set-up for a simplified deployment.



KEY BENEFITS:

- Persistent, reliable network connectivity
- Versatile for M2M applications, including mobile and fixed solutions
- High performance and reliability at a mid-tier price
- Remote management, control and configuration
- Easy installation and seamless integration with legacy equipment



POWERED BY: ALEOS



AirLink™ GX400

Multi-Purpose Intelligent Gateway

Technical Specifications

PRODUCT FEATURES

- ALEOS Embedded Intelligence
- Comprehensive device management and configuration
- Highly configurable with easy to use interface
- Expansion card slot
- Rugged design
- Multiple connection options
- Robust ARM 11-class processor
- AirLink Configurable Rules Engine
- 3 Year Warranty

SECURITY

- Onboard IPsec SSL VPN Client
- VPN Pass-Through (AH protocols)
- GRE Tunneling
- MAC Address Filtering
- IP Filtering
- Port Filtering
- SSH
- HTTPS

GPS TECHNOLOGY

- Precision GPS
- Time to First Fix: 39 sec.
- Garmin FMI support
- Accuracy: 3M 68% CEP

TECHNOLOGY

- HSUPA with fallback to: HSDPA, UMTS, EDGE, GPRS
- or
- EV-DO Rev. A with fallback to: CDMA EV-DO (Rev. 0), CDMA 1xRTT

BANDS

- Quad-Band HSUPA
850, 900, 1900, 2100 MHz
 - Quad-Band GSM/GPRS
850, 900, 1800, 1900 MHz
- or
- Dual Band EV-DO Rev. A
800, 1900 MHz

ENVIRONMENTAL

- Operating Temperature:
-30°C to +70°C / -22°F to +158°F
- Storage Temperature:
-40°C to +85°C / -40°F to +185°F

DIMENSIONS

- 143 mm x 96 mm x 44 mm
5.6 in x 3.8 in x 1.7 in
- 341 grams
12 oz

STANDARDS/APPROVALS

- FCC, Industry Canada
- RoHS Compliant
- CE, E-Mark
- Mil-Spec 810-F, IP64
- Class 1 Div 2
- Carrier Specific Approvals

HOST INTERFACES

- 10/100 Base-T RJ45 Ethernet
- RS-232 Serial Port
- USB On The Go
- 1 Digital I/O Port
- Expansion Card Slot for Additional Options
- 3 SMA Antenna Connectors (RF, GPS, Rx Diversity)



APPLICATIONS:

- Field Service
- Energy + Utilities
- Security Surveillance
- Retail / Point-of-Sale
- Infrastructure Monitoring
- Digital Signage
- Automatic Vehicle Location



APPLICATION INTERFACES

- TCP/IP, UDP/IP, DHCP, HTTP, NMEA, TAIP, TSIP, GPS

LED INDICATORS

- Network
- Signal Strength
- Activity
- Power/GPS