

CloudGate nanoWiPOM

3G Cellular Gateway with Data Acquisition & Logging peripheral computer

nanoWiPOM is a miniature wireless remote monitoring computer. Taking advantage of 3G cellular networks, nanoWiPOM allows remote monitoring of voltages, currents, frequencies and many other physical parameters.

The new CloudGate M2M 3G gateway is certified on all major US cellular operators (CDMA/EV-DO and WADA/HSPA+) with global versions available. The nanoWiPOM peripheral board adds Programmable Logic Controller (PLC) and Remote Terminal Unit (RTU) capabilities to the CloudGate.

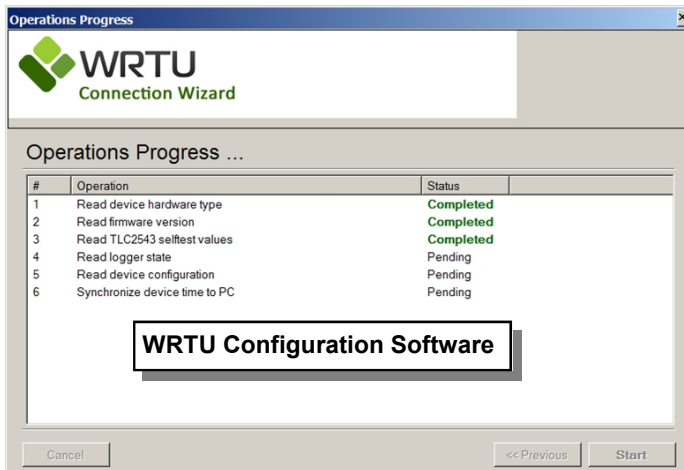
The dual processor combination of nanoWiPOM and CloudGate offers real-time data acquisition, logging, tag support, alarms, events, SMS and email notifications, MODBUS master and slave for remote monitoring applications.

CloudGate nanoWiPOM is fully backed by a 3-year warranty, technical support and application assistance from GetWireless.

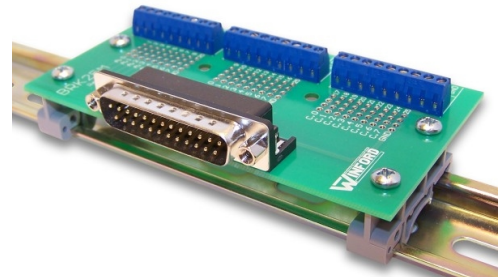


nanoWiPOM Features:

- Fast Cortex processor
- 32MB log memory, expandable to 32GB with microSD
- Status LED's (Red, Yellow, Green)
- Dual RS232 ports
- RS485 as MODBUS master or slave
- Device USB and USB On-The-Go
- 2 Analog Inputs, selectable as 4-20mA, 0-5V or 0-10V
- 4 Digital Inputs, 2 Digital Outputs (High current)
- All I/O and serial ports on DSUB connector
- Powers from CloudGate
- Low power consumption: Under 100mA
- WRTU software simplifies setting up
- Optional DIN-rail terminal block breakout board



Terminal Block Breakout Board



WRTU Software Features:

- Connect to device over RS232 port, RS485 port or USB
- Read device configuration, including tag configuration
- Configure device, date/time, calibration, RS485 port
- Check hardware status and health information
- Add/edit/delete tags
- Configure alarm conditions individually for each tag
- Configure SMS and email for each tag
- Manage contact list for SMS and email support
- Configure conversion parameters for tag value
- Start / stop logger
- System Diagnostics

Target Applications:

- Oil and Gas Monitoring
- Irrigation Generator Set Monitoring
- Energy Monitoring
- Utility Meter Remote Monitoring
- Factory Automation
- Vibration Monitoring

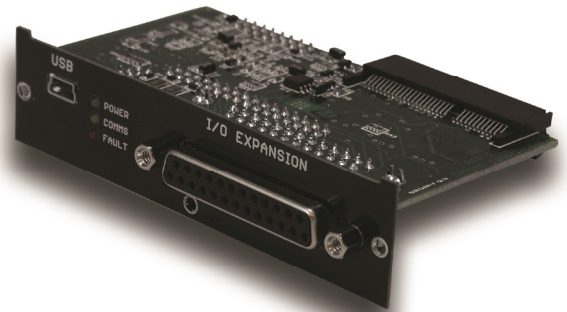


CloudGate nanoWiPOM

Powerful Cloud-based Linux Development Platform

CloudGate Base Unit Features:

- Fast Cortex processor
- Linux OpenWRT development platform
- CloudGate Universe Provisioning server
- 10/100 Mbps RJ45 Ethernet Connector
- Optional WiFi Card available
- Dual Expansion card slots nanoWiPOM I/O card installed
- Case size: 115 mm × 105 mm × 45 mm
- Operating Temp: -30°C to 70°C



CG9101-nanoWiPOM Data Acquisition Peripheral

Radio Features:

- Frequency bands:
GSM/GPRS/EDGE: 850/900/1800/1900 MHz
UMTS/HSDPA/HSUPA/HSPA+: 800-850/900/1900/2100 MHz
AWS band (1700/2100 MHz) (B1, B2, B4, B5, B6, B8)
- Simultaneous Equalization and Rx Diversity on all bands except for GSM/GPRS/EDGE
- Certification: CE/FCC/IC



Global Carrier Certifications:

CloudGate 3G Americas

- Verizon
- AT&T
- T-Mobile
- Sprint
- Aeris
- TelCel
- Bell & Telus

CloudGate EMEA

- Approved for Europe

CloudGate Asia

- Japan and Asia-Pacific

Multi-card Expansion Card Platform



Multi Wireless
Multi Carrier
Multi Peripheral
Remote Monitoring
Control Platform

Ordering Information:

- **CG0192-11897-11401** nanoWiPOM CloudGate 3G Americas Cellular Gateway with nanoWiPOM Data acquisition & logging peripheral computer, AC power Supply + WRTU developer image
- **CG0192-11897-SK** Starter kit for nanoWiPOM CloudGate 3G Americas Cellular Gateway with installed nanoWiPOM Data acquisition & logging peripheral computer + AC power supply + Breakout Board + Connectivity Cable + Taoglas Antenna + WRTU Developer Image
- **CG0192-11897-SK-AERIS** Same as **CG0192-11897-SK** with AERIS Image



Your Global Source for RF, Wireless & Energy Technologies
www.richardsonrfpd.com | 800.737.6937 | 630.208.2700