

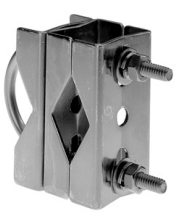
NON CELLULAR OMNIDIRECTIONAL BASE STATION ANTENNAS

Base Station Mounts

Base Station Mounts

| Model | Description | Application | Qty per Assembly |
|----------|--|---|------------------|
| MBSWM | Wall mount | For wall mounting antennas of up to 2-1/4" in diameter. | 1 |
| MMK1 | 3-groove backing plate | For mounting a 1-5/16" outer diameter antenna to a 1-1/4" maximum outer diameter mast. | 1 |
| MMK1924 | Stainless steel "L" bracket mount for wall or pipe mount | For mounting an omnidirectional antenna to a 2" maximum diameter mast. Bracket is 6" long with a 5/8" diameter hole for mounting the antenna. | 1 |
| MMK2 | 1-1/2" stainless steel "L" bracket | For mounting an antenna with a base connector to a 2" maximum diameter mast. Bracket is 9" long with a 5/8" diameter hole for mounting the antenna. | 1 |
| MMK3 | Base station mount bracket | For mounting a 1-5/16" outer diameter antenna to a 1-1/4" maximum outer diameter mast. | 2 |
| MMK4 | Heavy duty fiberglass base station mount | For mounting an antenna with 2-2/2" maximum diameter onto a 2-1/2" maximum outer diameter mast. | 2 |
| MMK6 | MFB base station mount bracket | For mounting a 1-5/16" outer diameter antenna base without a pigtail to a maximum 2" diameter mast. | 1 |
| MMK8A | Aluminum MFB mount bracket | For mounting a 1-1/4" diameter antenna to a 2-1/2" maximum diameter mast. | 1 |
| MMK9 | Aluminum MFB mount bracket | For mounting a 1-5/16" diameter antenna to a 2-1/2" maximum diameter mast. | 1 |
| MMK11 | Ceiling Mount | For mounting MFB24004 | 1 |
| MMK12 | Heavy duty MFB mount bracket | For mounting | 1 |
| MPAB7 | Heavy duty outdoor adjustable mount with +/-35° uptilt/downtilt adjustment | Adjustable outdoor mounting bracket for MP XF 800/900 MHz directional panel antennas. One 6" and one 8" bracket. | 2 |
| MPAB8 | Heavy duty outdoor adjustable mount with 17° uptilt/downtilt adjustment | Adjustable outdoor mounting bracket for MPXF 800/900 MHz directional panel antennas. Two 6" brackets. | 2 |
| MPAB8W | Heavy duty outdoor adjustable mount with 17° uptilt | Downtilt adjustment / Adjustable outdoor mounting bracket for MPXF 800/900 MHz directional panel antennas. Two 6" galvanizing brackets. | 1 |
| MPAB11 | Short adjustable indoor mount | Short adjustable indoor mounting bracket for MPXF 800/900 MHz directional panel antennas. | 1 |
| MPAB12 | Long adjustable corner mount | Long adjustable indoor corner mount for MPXF 800/900 MHz directional panel antennas. | 1 |
| MYK1 | Mount kit for 7/8" boom yagis | For mounting 7/8" diameter boom yagis to a 1-5/8" maximum diameter mast. | 1 |
| MYK2 | Mount kit for 1-1/4" boom yagis | For mounting 1-1/4" diameter boom yagis to a 2" maximum diameter mast. | 1 |
| MYK3 | Heavy duty mount for 7/8" boom yagis | For mounting 7/8" diameter boom yagis to a 2" maximum diameter mast. | 1 |
| MYK4 | Mounting kit for bottom dipole fiberglass base station antennas | For mounting to a 2" maximum diameter mast. | 1 |
| MYK9 | Heavy duty aluminum plate mounting bracket | For mounting to a 2" maximum diameter mast. | |
| MYK10 | Heavy duty cast yagi bracket | For mounting a 7/8" OD yagi to a 2-1/2" maximum OD mast. Adjustable for vertical or horizontal polarization. | 1 |
| MYK14 | Sand cast mounting bracket for 3/4"-7/8" boom yagis | For mounting antennas with boom diameters of 3/4" to 7/8" to 3" maximum diameter masts. | 1 |
| MYK17-NL | Mounting bracket for 0.75" diameter boom yagis | For mounting to masts measuring 1-5/8" in diameter. | 1 |

MMK Mounts for Base Station Antennas



MMK1



MMK2



MMK3



MMK4



MMK6



MMK8A



MMK9



MMK11



MMK12

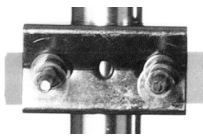


MMK1924



MBSWM

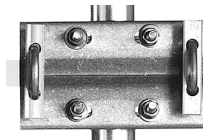
MYK Mounts for Yagi Antennas and MPAB Mounts for Panel Antennas



MYK1



MYK2 (front)



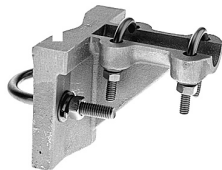
MYK3



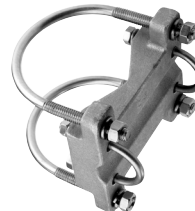
MYK4 (front)



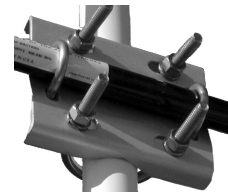
MYK9



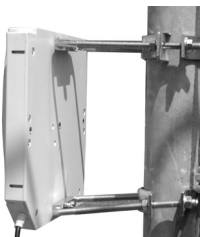
MYK10



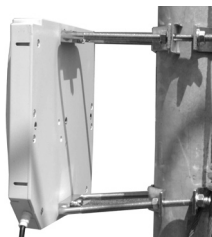
MYK14



MYK17



MPAB7



MPAB8



MPAB11



MPAB12