

## PCTEL Carrier Grade 220MHz and 160MHz Omnidirectional Base Station Antennas

The BOA omnidirectional base station antenna series consist of a linear array, encapsulated in a heavy duty fiberglass radome with a thick walled 6061-T6 aluminum mounting base for reliable long term use. The rugged design allows the BOA antenna series to withstand harsh environments and is ideal for Industrial Wireless applications. The series is DC grounded.

### Features

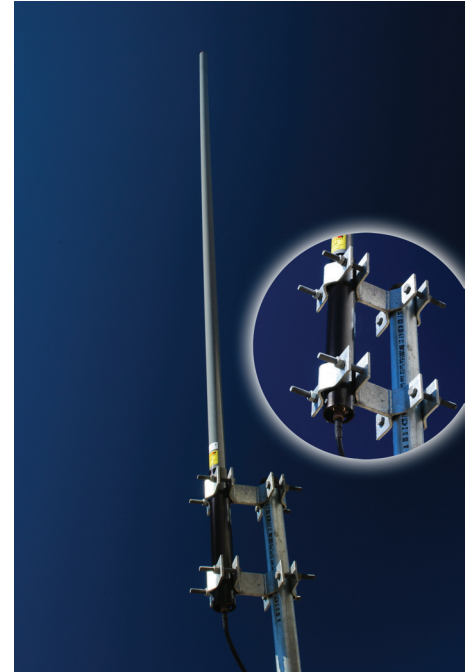
- UV stable light gray fiberglass radome (2.0" diameter)
- Hard coat anodized mounting base (2.375" diameter)
- Galvanized mounting hardware
- Removable drain plug for upright or inverted mounting

### RF/Electrical Specifications

Model	Frequency Range	Nominal Gain	Return Loss	SWR	E-Plane Beamwidth
BOA2177	215-225 MHz	7.1 dBi/5 dBd	>10 dB	<2.0	16°
BOA2175	215-225 MHz	5.1 dBi/3 dBd	>10 dB	<2.0	25°
BOA1605	160-162 MHz	5.1 dBi/3 dBd	>10 dB	<2.0	25°

### Mechanical Specifications

Model	Weight (Mass)	Height	Equivalent Flat Plate Area
BOA2177	12 lbs	151"	2.10 ft <sup>2</sup>
BOA2175	10 lbs	122"	1.7 ft <sup>2</sup>
BOA1605	10 lbs	122"	1.7 ft <sup>2</sup>



### Technical Data

<b>Maximum Power:</b> 250 watts
<b>Nominal Impedance:</b> 50 ohms
<b>Radome Material:</b> Pultruded Fiberglass (2" Diameter)
<b>ESD Protection:</b> DC grounded
<b>Rated Wind:</b> 150 mph
<b>Termination:</b> N female bulkhead
<b>Mounting Hardware:</b> MMK5 (Included)